



Office of the Director

Jim McCuaig Education Centre
2135 Sills Street Thunder Bay ON P7E 5T2
Telephone (807) 625-5131 Fax (807) 622-0961

BOARD MEETING NO. 14 (SPECIAL)
Wednesday, September 14, 2016
Jim McCuaig Education Centre

Ian MacRae
Director of Education

Deborah Massaro
Chair

AGENDA

PUBLIC SESSION
7:30 P.M. – in the Board Room

	<u>Resource Person</u>	<u>Pages</u>
1. Call to Order		
2. Disclosure of Conflict of Interest		
3. Approval of the Agenda		
4. Delegations/Presentations		
4.1 North Side Renewal Process	C. Silen	1-4
4.2 Option 2: The Case for Hammarskjold	Hammarskjold Parent Committee	5-17
4.3 School Renewal Plan ARC Review Committee	P. Greenwood	18-19
4.4 Superior Collegiate & Vocational Institute Delegation	K. Hilden	Verbal
5. Adjournment		

Trustees (Chair and Vice-Chair) and presenters of reports will be available
for comment after the Board Meeting.

LAKEHEAD DISTRICT SCHOOL BOARD

Delegation to Trustees –September 2016

Cheryl Silen

Re: North Side Renewal Process

Good evening Trustees, staff and everyone else.

I appreciate the chance to speak to all of you tonight regarding the current School Renewal process on the North Side. Many of you may recognize me from past meetings or from other school related work I have done, but for those of you who do not, let me introduce myself. My name is Cheryl Silen and I am the mother of 4 children who attend Lakehead Public Schools. Currently they are in Grades 3, 6, 8 and 11 at Gorham and Ware and SCVI. I am a fairly involved parent, sitting on the Parent Councils at both Gorham and Ware and at SCVI, as well as being very involved in the Home and School Association at Gorham and Ware. I don't mention this to blow my own horn, but merely to explain that I am not just a 'passer by' but a parent that cares enough about my children's education to be involved in the processes that make it better. I am a firm believer in the public education system and in the teachers and administration that make such a difference in my children's lives.

Having said all of that, I also see the realities this board faces in today's economic climate. Families are shrinking, jobs are leaving and there are more and more choices for educating our children. The province is cutting funding, and funding other boards, and those changing demographics lead to changes in enrollment and educational needs. So I understand the need to adjust facilities and staffing to best meet the needs of students and their families. And I can see how putting more students into the same building makes it far easier to offer a broader depth of programming and more modern resources.

I am here tonight to express my reasons for supporting Option 1 as the optimal choice for the future of the North Side students. There are so many reasons I believe this to be true, that I felt I had to come and express them in person. I felt that you needed to see a real parent of some of your students tell you why it is better for my children to have access to a newer modern secondary school, and why I can also see the reasons for Vance Chapman being the preferable elementary choice. I will not represent every parent, and our family is not the same as every other family, but from our point of view, the choice looks obvious (although definitely not easy).

First we likely need to discuss the money. Given that the overall budget difference between Option 1 and Option 2 is about 15 percent of the total proposed cost for the North Side renewal plan at about 1.5 million, the two choices are really very close in cost. However, if we look a little closer, on the assumption that the province will accept both plans equally as well and fund them accordingly, it is actually 1.5 million MORE expensive for this board to choose option 2. The Facility Renewal needs at Hammerskjold are just that much higher than the proposed needs at Vance Chapman, so in the long run, we already know that Option 2 will cost US more. Add in any cost over runs for renovations, which are far more likely to have surprise costs than additions are, AND any potential technology upgrades and green upgrades in the future at Hamm (both of which would be difficult and expensive) and I feel that those long term costs will add up much faster than the Staff report indicates.

We must also talk about the outdoor greenspace at the proposed schools. Much has been said about the size of the fields and parking lot at Hamm as compared to those at SCVI. However, we really should be comparing the sizes of Vance and Hammerskjold, or comparing the size of SCVI as either an elementary playground or a secondary playing field. Elementary students use their play area every day, for a good portion of the day. Even with the proposed expansion into the SCVI parking lot, once we divide off space for daycares and FDK, there isn't much left. Especially compared to the natural spaces available at Vance, with the outdoor classroom that the school uses regularly and nearby community fields available if needed. The only outdoor facilities currently at Hamm that are not easily available to secondary students at SCVI are the track and tennis courts. While I concede that a North side track is a valuable training facility, for the number of students who use it outside of phys ed class, it shouldn't be a major factor in this decision.

While I understand that consolidating into one larger secondary school will enable the board to offer more options for classes and scheduling, I am concerned that in the process something will be lost. I worry that students half way through specialized programs such as the Manufacturing SHISM will feel like they don't have access to all of the same equipment that they had before, or that there is more competition for the use of fewer available machines/tools. For a student in Grade 11 this year, even losing out on a few months of specialized learning or having a few minutes less per day of practice may impact them in a negative way in post secondary education or careers. Given the relative age and design of the different shops areas, SCVI should more easily absorb the extra students, and keep those SHISM students on equipment they are already accustomed to.

The day to day technology is another consideration that is no small matter. I am told that while both high schools have Fibre Optic technology into the buildings, that it is not in the current plans to install it in every classroom at Hamm like it is in Superior. Bruce Nugent told me "This means that the classrooms at Superior could have access to unlimited bandwidth while copper at Hammarskjold is limited to 1 gig of bandwidth. Currently, both schools use 100 mgs of bandwidth which has been sufficient to deliver effective programming to students. Evolving advances in technology will determine upgrades that are required over time at both sites". I don't know about you, but I can recall a time when having 64KB of memory in a computer was considered 'more than anyone could need' and now my cell phone has 16GB in it. Most data plans allow for usage of 3-6GB a month. If that has happened in only the last 10-20 years, how on earth can we assume that 100mgs will be sufficient in even 5 years??? Or is this one of those costs that we will have to pay for down the line, AGAIN. In a building where we already know that asbestos will hinder that installation AND make it more expensive? Secondary students need to be able to learn and use technology that will prepare them for the modern world of work. That means technology that is integrated into their classrooms and building and not daily hoping that the wifi is working well enough to download their homework. It has been said that this process will leave no student with LESS. But Mr Wright and Mr Nugent agree that Hammerskjold cannot be brought up to the same level as SCVI, but say it will be ENOUGH. Enough for who? And for how long?

It must also be said that there are students who are concerned about matters that will impact them more immediately. The large open bright spaces and top notch security system at SCVI **IS** a factor that makes many students lives feel safer and more comfortable. While I know that there is some security

cameras at Hamm, it is a concern that they are older and that there are more spaces in the school that they do not cover. For many students in a large school in a busy city, that security is an important piece that allows them to focus on school rather than worrying about what is going on around them.

This board has stated in its strategic plan, a mandate to “reduce greenhouse gas emissions” and has expressed a commitment to continue its “long-term energy management strategy that guides capital investments in schools”. Option 1 sees an overall reduction in those greenhouse gasses by more than 30 percent over option 2. And the capital investments proposed? Renovations? No green initiatives stated. Additions? Proposed costs are inclusive green upgrades. Option 1 fits that mandate like a glove. Option 2 simply doesn't.

The Elementary School teachers union says they are in favour of Option 2. I am not surprised nor do I blame them for wanting a new building instead of an older one. SCVI is bright, modern and easy to maintain. There is lots of room and the building is full of great technology. But it is SO big that the Staff report recommends putting board offices into the building as well. That technology will be very useful for senior students, but not much of it is needed for younger students. The idea of possibly adding in tech and home ec classes means more jobs, in fully stocked spaces and labs. But those tech rooms can be factored into the addition at Vance. And if the building is so big that we can fit board offices in as well as a full elementary school that can hold students from three smaller schools, AND daycares, then perhaps it is TOO big?

I have had many conversations with many people about this issue, as I am sure you have. One of them was with a close neighbour of SCVI who was concerned about the parents who sit idling on her street for 10-15 minutes every day while they wait to pick up their children. I asked her what she thought of the congestion on River St every day at dismissal time. And asked her to imagine it on High St or Balsam as well. After all, a secondary parent can text a student to meet them around the corner or up the street. An elementary parent must pull into the kiss and cry area to be identified before their student can be released. Parking and idling concerns can be addressed through several avenues in our bylaws with the city. But traffic in and out of a busy elementary school will be a challenge that is hard to avoid or fix. As River St and Mary St already exemplify.

The Central location of SCVI has been brought forward as well. Which is great for 400 elementary students who will be mostly bussed to whichever school is chosen. But for serving ALL Secondary students coming from Shuniah, Mackenzie, Lappe, Kaministiquia, Gorham, Fowler, AND all over the north side of the city, the central location makes far more sense to encourage more walkers. And for after school jobs? Bay and Algoma is a 33 minute walk from SCVI. The Cumberland business area is similar. Downtown Red River Road? About 25. Red River West? About 20. That opens up far more possibilities than the location on Clarkson.

An elementary school on the site would serve 2000 students over 10 years? As a secondary school it will be available to serve ALL the students on the north side for those so important secondary years

In ten years, when my youngest is in high school, we may need to replace one of these buildings. Or maybe in 20 years for my grandchild. One is worth 33 million, the other 11 million in today's costs. Those prices will only climb, but it will still likely be 1/3 the cost to replace an elementary school, whether it happens in 10 years or 50. Or we can keep one expensive behemoth that hopefully will last with pricey maintenance, and have the "Most Expensive Elementary School" (and partial board office) in the province sending technologically savvy Grade 8 students into the out of date high school.

This decision isn't about school colours or the history of a building. It isn't about track meets and football fields. It isn't about one school offering a better staff room or more parking. It IS about what our students need for a well rounded education, what EVERY student needs for success, from JK to Grade 12. And it IS about a wise use of the ever more limited resources that school boards in this province have to work with. And while it ISN'T about one board vs another, perhaps the idea of a central high tech secondary school in the very centre of the North Side which ALL North side Students can take advantage of will induce more families back to the public board and away from the other overcrowded boards and their aging schools. We have the potential to design a Green addition at Vance Chapman that can offer whatever other facilities the board deems necessary, but there are serious limits on what can be done through renovations at Hammarskjold due to the materials and design of the existing building.

For the long term, Option 1 is the only option that truly makes sense to serve the needs of ALL students on the North Side. I know that you have many, many things to consider while you make this decision. I ask you to consider not just the numbers, the votes, the emotion, but really, what is going to make the most sense in the next few years AND in the next few decades.

MY Children are YOUR Students and this is THEIR Future!

Option 2: The Case for Hammarskjold



Location, Location, Location!

- Optimally situated in a central location next to major traffic corridors and high-growth areas of the city.
- 17.3 acre campus is entirely self-contained.
- Plenty of room for growth and expansion in the future without jeopardizing useable space for athletic, horticultural, traditional and recreational activities.
- Located near EMS, the Boys and Girls club, public transportation and numerous local businesses that can be accessed during lunch and for part-time jobs and co-ops, including for Special Needs students.

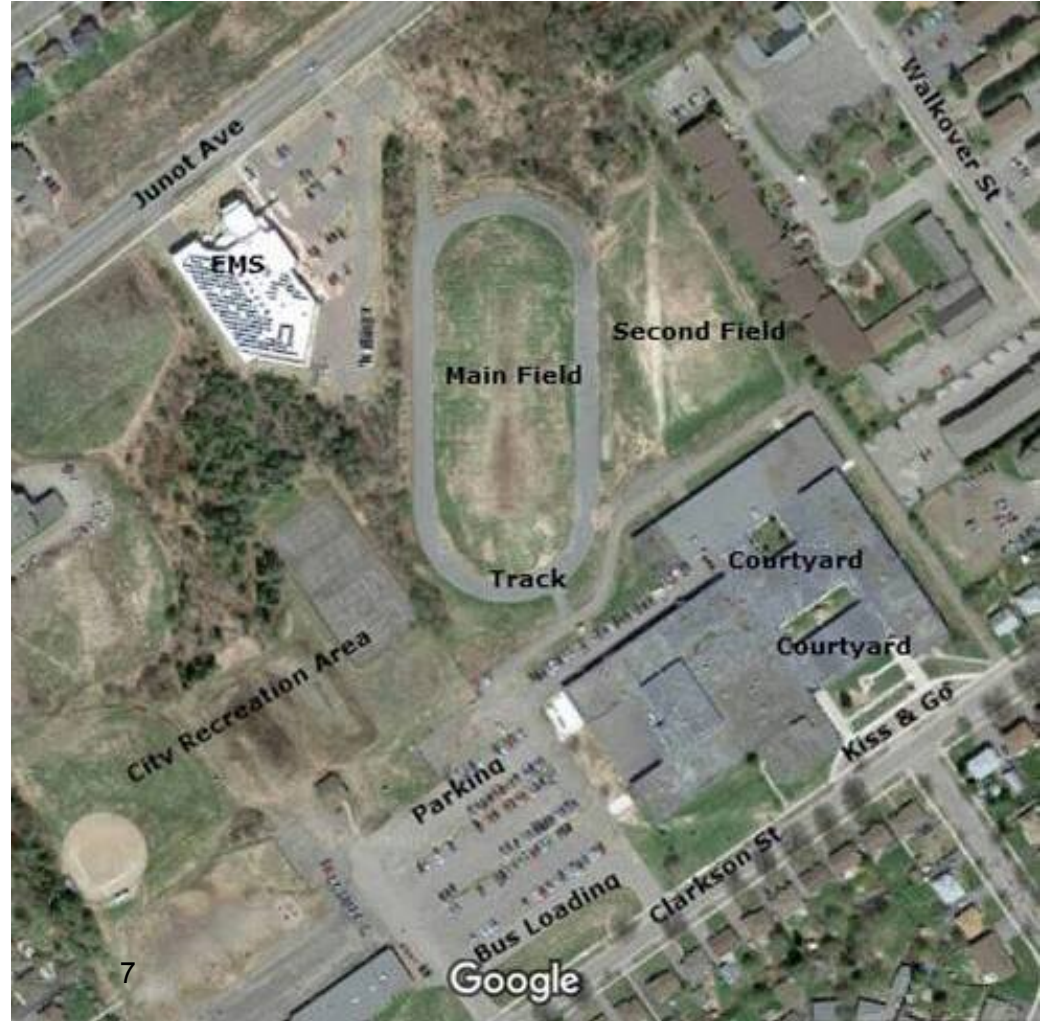
Lot Size

Hammar skjold

- lot is 7 hectares (almost 3 x)
- Outdoor track
- Greenspace
- Future proof for expansion
- Room for Outdoor Education

Superior

- Lot is 2.7 Hectares



Reduced Busing/Increasing walking

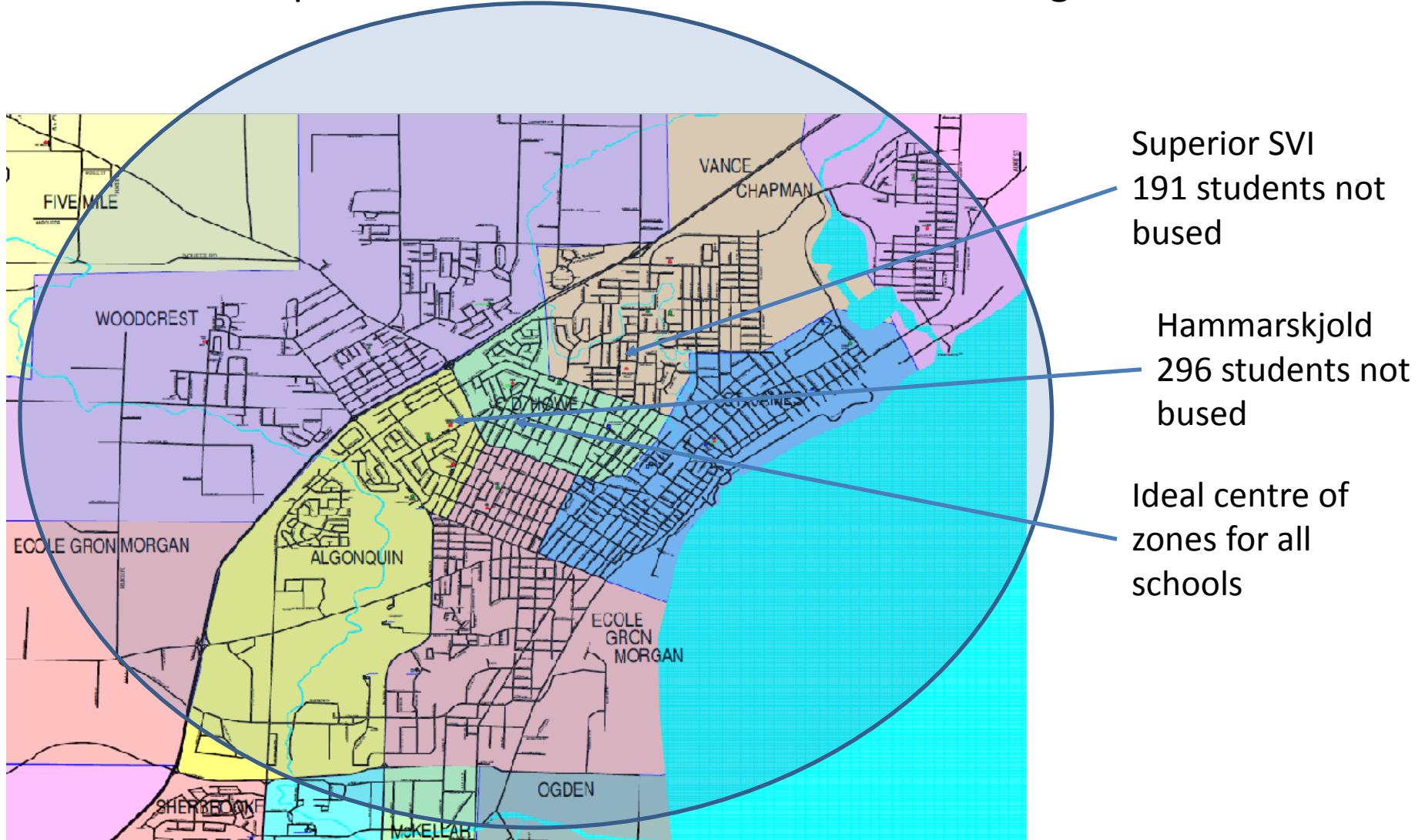
A School board objective is to “manage facilities in an effective and efficient manner to ensure the financial viability and sustainability of the school board” and “well-being for every student.”

Important factors in an effective, efficient operations and well-being of students are location of the schools.

Having schools located where a larger percentage of students can walk to school not only keeps them healthy, but saves the board in busing costs.

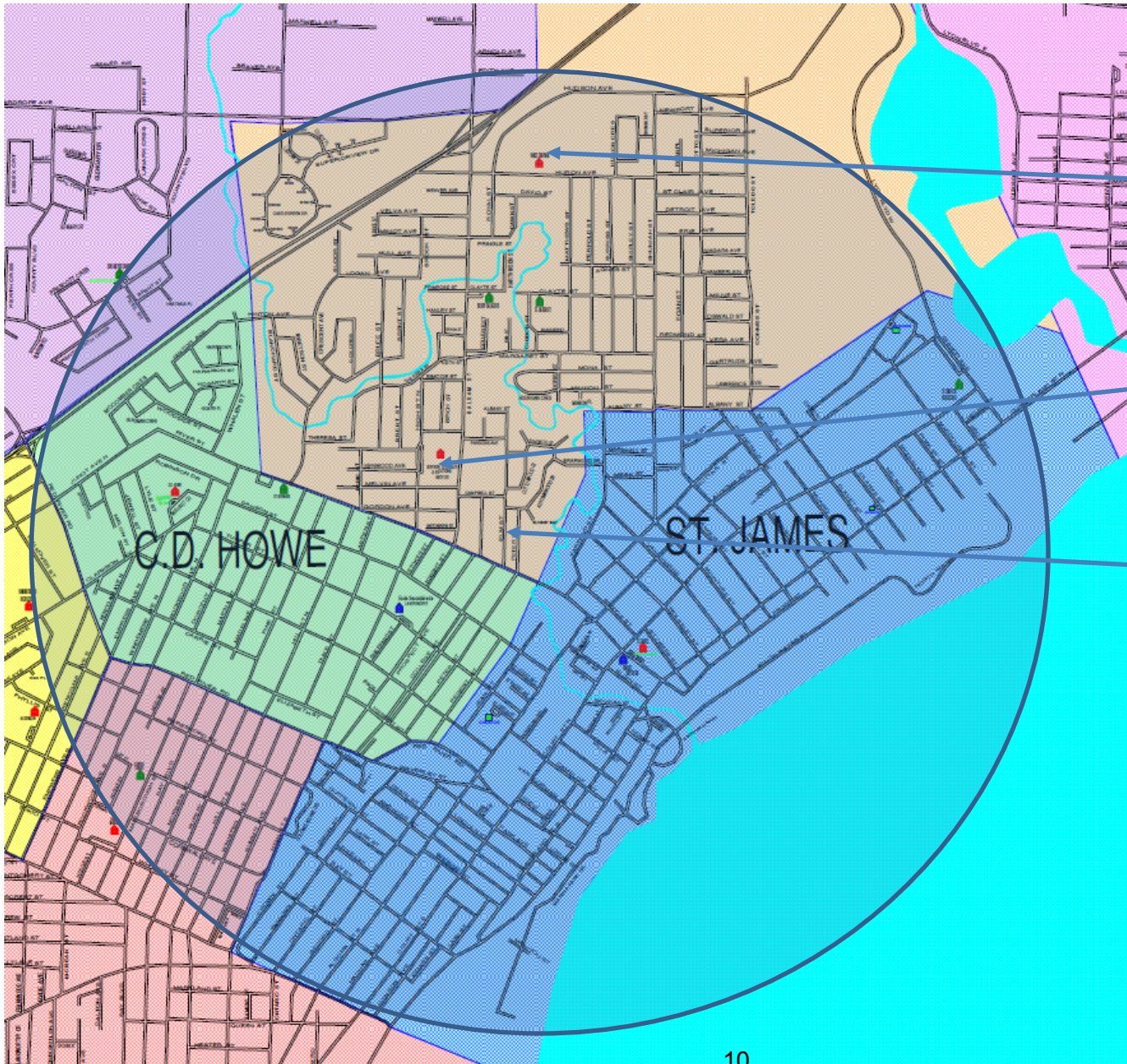
Having schools located in the centre of their zones reduces the busing times, which adds to the student’s well-being from shorter busing, and saves the board busing costs.

Optimal Location for Central North Core High School



Option 2 results in a 55% increase of students not being bused due to a more central location.

Optimal Location for Central Elementary School



Vance Chapman
136 students not
bused

Superior CVI
191 students
not bused

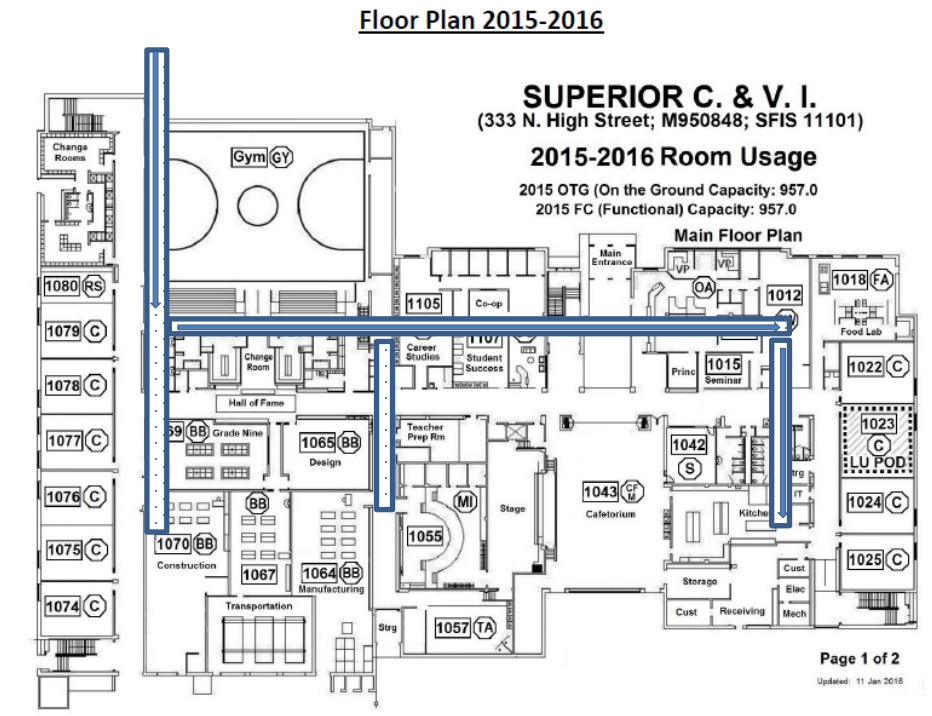
Ideal centre of
zones for all 3
schools

**Option 2
results in a
drastically
more
central
location.**

Crowd Flow Calculations SCVI



SCVI
Main Hall



1 Single North/South Hall
3 East/West Halls

Only 1 path from one corner of school to the other.

3 meter wide Hall, less lockers = 2 meters active walkway

Standard crowd flow is 82 people per minute per meter

164 people per minute with 2 meter flow

1397 students
(Hammarkjold plus SCVI)

8.5 minutes to allow 1397 people through a hallway, this does not include time to walk to and from classes.

8 minutes allotted between classes

Add in students with disabilities or wheelchairs, and this becomes a congested hazard with multiple safety issues.

A long, empty school hallway with lockers on both sides. The floor is polished and reflects the overhead lights. At the end of the hallway, there is a poster on the wall and a red square on the wall. The text "ENOUGH SPACE" is overlaid in large, bold, red letters with a white outline at the top of the image.

ENOUGH SPACE

FOR EVERYONE!!

Special/Multi-Needs Facilities



Large, existing designated areas for special and multi-needs programming, with all the equipment and ample space needed, including direct access to their own outdoor courtyard. Wide hallways to accommodate special needs wheel chairs and tricycles and a separate drop off entrance in the rear of the building away from heavy traffic flow. These features cannot be replicated on the Superior site.

The Foundation For Athletic Excellence

As noted by the SSSAA, Hammarskjold provides the best North Side option to mirror Westgate's South Side campus based on the following rationale:

- Larger main gym capacity at Hammarskjold (790) vs SCVI's capacity (778)
Hammarskjold has an auxiliary gym, a multipurpose wrestling room and a full size weight room. Outside there is a full size football field, a second adjacent practice field, 400 m track, tennis courts, hockey rink, and a baseball diamond.
- SCVI has a only a main gym with an open space at the back of that gym currently used as a weight room. There is a small practice field outside that will no longer be regulation football sized if the building is renovated under Option 1. No additional field space on site.
- Hammarskjold has ample parking for large events (over 200, vs the SCVI 149)
- SCVI would make an ideal central north core elementary facility. Given the impending closure of the College "bubble" and declining availability of facility use at LU, Option 2 would provide the public system with 2 large gyms centrally located in the North core for events.

A 1400 student high school will need to accomodate numerous teams and multiple sports during the same time periods. The large indoor and outdoor facilities at Hammarskjold will allow multiple teams to be able to practice and play at the same time.

The Future of Superior Elementary

- A central, modern north core elementary school will provide a draw to new students and families and help maintain confidence in public education on the north side of the city.
- The advanced shops, science labs, and music resources will provide opportunities not only for grade 7-8 students, but for students from other Thunder Bay elementary schools as well as the kick start programs.
- The gym is already used for a number of elementary school events, such as sports and the math Olympics. The building has already proven it can safely and successfully accommodate elementary students.
- With an estimated population of 600, there would be further opportunities available, whether the school continues to grow, or if further consolidation is needed in the future.
- Ecole Gron Morgan, one of the LPSB's most successful elementary schools, was built as a high school at one time housing up to 750 students and was converted to meet elementary student needs.
- The Owen Sound School Board has recently completed a school renewal process and has voted to convert an existing High School into an Elementary school. This proves that, not only is there a precedent for Option 2, but that other schools boards have not considered it a "waste" to repurpose a building to accommodate the changing needs of a student population and updated funding models.

In Conclusion

The Lakehead Public School Board's Recommendation to Support Option 2 creates a Win-Win for ALL North Side Students:

- A long-term investment in the right size building and lot in the right location.
- Decreased student busing time, costs and Greenhouse gas emissions. Increased walking.
- Ensuring adequate on-site parking, to protect our children's safety.
- Only Hammarskjold has the flow capacity in its hallways to allow our children to get to and from classes and evacuate the building safely and efficiently if necessary.
- Hammarskjold is the greener option, reusing a building, using less energy.
- Hammarskjold is the fiscally responsible option and best use of existing resources, saving over 4 million dollars for expensive additions, as well as reducing 5 year costs and utility costs.
- Selecting Option 1 as the central north core high school would needlessly place the board at risk as Option 1 leaves no capacity for expansion if student populations increase.
- Hammarskjold fosters Athletic Excellence with the facilities and space to place students on an even playing field with their secondary school peers.
- Hammarskjold supports Academic Excellence and is consistently ranked as Thunder Bay's top performing public high school.

Option 2 mirrors the LPSB's South Side Renewal Plan giving students impacted by the Renewal Plan on both sides of the city an equal spacial, learning and athletic environment.

Tuesday, August 30, 2016

Lakehead District School Board
Jim McCuaig Education Centre
2135 Sills Street
Thunder Bay, ON P7E 5T2

To the attention of : School Renewal Plan ARC Review Committee

Please accept my delegation request to present to the Board input on the Final Staff Report (078-16) of June 23, 2016.

Contact information:
Paul Greenwood

Thunder Bay, ON P7B 6K8

DELEGATION/DEPUTATION:

The ARC review is coming to completion after a thorough and detailed review of the alternatives and options available for the Trustees' consideration.

The Final Staff Report and recommendation has been submitted to Trustees and it is my opinion, along with many in the Thunder Bay community, that the recommendation to consolidate the two North side high schools by moving the student population of Superior Collegiate into Hammarskjold High School, is the best option before the board. For students, this option will provide exceptional facilities for both secondary and elementary students. For the Lakehead Public School Board, this option puts them in a position to potentially grow their student base, by having two facilities (one elementary and one secondary), both centrally located in the North End, both with capacity to increase enrolment, and both with first class programs, technology, and connection to the community.

The Trustees have an important decision that must be made. It is important that they consider all the relevant information and I support their decision-making process being guided by the following principles:

1) A strong commitment to the success, achievement, and well-being of every student:

- Student success and the environment to achieve that success will continue to be achieved at Hammarskjold. Size and location has a significant impact on a school's capacity to provide desirable programming; whether it is the arts, technology, athletic, academic, or special needs. Hammarskjold has the location and the space needed to achieve success in all forms of programming. Its versatility will lend to greater success by providing program options that meet the needs of all talents, aptitudes and interests. Hammarskjold already has the highest level of student retention in the City of Thunder Bay, which speaks volumes to the delivery of education and the well-being of students.

2) Quality program delivery in an equitable and inclusive learning environment:

- Hammarskjold High School has a history of successfully including and supporting students with special needs. The location of Hammarskjold is ideal for special needs students, who rely on the close proximity to and support of employers, who have a long history of providing invaluable co-op work experiences for these students. A working environment that is equal, inclusive, and accepting takes years to develop and establish. Hammarskjold has proven success at developing and maintaining such an environment.

3) Building strong relationships with and among students, staff, parents, guardians, and community stakeholders:

- Hammarskjold has a strong alumni and community support. Consider the over 600 petition signatures and comments of support from alumni who have stayed connected with their Hammarskjold community, and from stakeholders, who are passionate about their relationship with the school.

4) Fiscal responsibility and planning for long-term sustainability:

- The Final Staff Report on fiscal responsibility must be relied on as administration has the best knowledge of the cost and savings generated from the pupil accommodation review and the long-term impact of their recommendation to support the consolidation into Hammarskjold. The review supports keeping Hammarskjold open and is the most fiscally responsible decision.

Thank-you.

LAKEHEAD PUBLIC SCHOOLS
OFFICE OF THE DIRECTOR OF EDUCATION

2016 SEP 14
HANDOUT

TO THE CHAIR AND MEMBERS OF
LAKEHEAD DISTRICT SCHOOL BOARD – Public Session

Good evening Chair Massaro, Lakehead District School Board Trustees & Board Administration.

My name is Kristine Hilden and I would like to thank you for the opportunity to speak tonight.

Judy Korppi and I are here as the non-teacher and teacher representatives for Superior CVI. The video we will share expresses the thoughts and concerns of our stakeholders.

Superior was built for secondary students. Yes, much of what is offered in one school can be duplicated in another, but Superior has the ability to offer MORE than any other secondary school in the city. Converting the space within Superior to meet the needs of elementary students and repurposing space to accommodate community organizations is not what this school was intended for. It is the only full service secondary school built in our city in over 50 years. Do we want the loss of Superior CVI for our secondary students to be the Lakehead Public School Board's legacy?

Video - <https://animoto.com/play/pcclpE0EeDJnKcYaGDTI1q?autostart=1>

Thank you & we look forward to you visiting Superior on September 20th, when you will be able to experience firsthand what this amazing facility has to offer secondary students of the Lakehead Public School Board.

At this time, we will happily answer any questions you may have.