



South Side Renewal Plan

School Information Profile

Agnew H. Johnston

145 Churchill Drive West
Thunder Bay, ON
P7C 1V6

February 9, 2016



SCHOOL INFORMATION PROFILE

Agnew H. Johnston Public School

Table of Contents

Purpose.....	3
Instructional Profile.....	4
Facility Profile.....	7
Other School Use Profile.....	10
Appendices:	
A Floor Plan.....	11
B Aerial View – School Site.....	12
C Aerial View – Neighbourhood.....	13
D Street Map.....	14
E School Zone Boundary Map.....	15

SCHOOL INFORMATION PROFILE

Agnew H. Johnston Public School

Purpose

The School Information Profiles (SIP) is prepared by board staff as an orientation document to help the Accommodation Review Committee (ARC) and the greater community understand the context surrounding the decision to include a specific school or schools in a pupil accommodation review. The SIP provides an understanding of and familiarity with the facilities under review.

The School Information Profile includes data for each of the following two considerations about the school under review:

- value to the student; and
- value to the school board.

Information is prepared as at October 31, 2015 unless otherwise indicated.



~ Growing Together ~

SCHOOL INFORMATION PROFILE

Agnew H. Johnston Public School

Instructional Profile

Grade Configuration	FDK-8
Specialized Programs	French Immersion

Current Grade Organization	<u>English</u>	<u>Number of Classes</u>		<u>French Immersion</u>	<u>Number of Classes</u>
	JK	2		SK	2
	JK/SK	1		1	2
	1/2	1		1/2	1
	2/3	1		2	2
	4/5	1		3	1
	5/6	1		3/4	1
	7/8	1		4	1
				5	1
			5/6	1	
			6/7	1	
			7/8	1	
Number of single-grade classes	11 (2 English / 9 French Immersion)				
Number of split-grade classes	11 (6 English / 5 French Immersion)				

Enrolment October 31, 2015

	JK	SK	1	2	3	4	5	6	7	8	Total
English	65	7	9	12	13	17	23	15	11	14	186
French Immersion		57	45	53	32	30	40	24	24	14	319
Total		64	54	65	45	47	63	39	35	28	505

Number of out-of-boundary students <i>*For schools with French Immersion, JK students are not included.</i> <i>**Intermediate students from an FDK-6 school moving to the FDK-8 school that they are zoned for are not included.</i> <i>***For the Churchill 7-8 program, students on the North side are considered out of zone.</i>	66
Percentage of students accessing special education services <i>Source: Ministry of Education Elementary School Profile, January 2016</i> <i>*The percentage of the student population who are in special education programs or receive special education services. This includes students with identified and non-identified exceptionalities, but excludes students identified as gifted (Provincial average is 14.9%)</i>	7.6%

SCHOOL INFORMATION PROFILE

Agnew H. Johnston Public School

School capacity	530
Utilization	95.3%
<p><i>*School capacity and utilization are both “on-the-ground” (OTG) values.</i></p> <p><i>**The Ministry of Education calculates on-the-ground school capacity by assigning a loading to each category of instructional space identified (e.g. classroom, science lab), based on the number of pupils that can reasonably be accommodated in each category of instructional space. The sum of all the loading in the instructional space within a facility is its capacity.</i></p> <p><i>***Utilization is calculated by dividing the enrolment of the school by its capacity.</i></p>	

Enrolment History

Year	English	French Immersion	Total Enrolment
2010-2011	157	226	383
2011-2012	198	235	433
2012-2013	183	268	451
2013-2014	195	285	480
2014-2015	190	311	501
2015-2016	186	319	505

Enrolment Projections

Year	English	French Immersion	Total Enrolment
2016-2017	171	352	523
2017-2018	162	369	531
2018-2019	153	388	541
2019-2020	139	391	530
2020-2021	128	401	529
2021-2022	122	412	534
2022-2023	118	411	529
2023-2024	115	420	535
2024-2025	115	417	532
2025-2026	115	411	526

SCHOOL INFORMATION PROFILE

Agnew H. Johnston Public School

Staff

Teaching Staff	Classroom Teacher	22.0	Total: 30.884
	Facilitator	1.5	
	Itinerant Teacher	3.384	
	Early Childhood Educator	4.0	
Support Staff	Student Support Professional	5.0	Total: 8.875
	Information Services Technician	1.0	
	Custodial	2.875	
Administrative Staff	Principal	1	Total: 3.0
	Vice-Principal	0.5	
	Secretarial	1.5	

Extra-Curricular and Co-Curricular Opportunities for Students

- Lakehead Elementary Athletics
- Creative Movement Jamboree
- Food available at breakfast and lunch
- OFIP tutors and Tutors in the Classroom
- Concerts or musicals
- Leadership Team
- I Shine Program for Junior level girls (building emotional intelligence and resiliency)
- Circle of Wellness
- Thunder Bay Symphony



SCHOOL INFORMATION PROFILE

Agnew H. Johnston Public School

Facility Profile

Date of Construction

Original Building	1970
Additions	N/A

Size of school site	3.8 acres / 1.5 hectares
Building area	48 272 sq.ft. / 4484.6 m ²
Number of Portable Classrooms	0
Number of Classrooms and Specialized Teaching Spaces	<ul style="list-style-type: none"> - 5 FDK Classrooms - 16 Classrooms - Gymnasium - Library - Special Education Withdrawal - Science Lab
Playground Area	Approximately 2 acres
Outdoor Features	<ul style="list-style-type: none"> - play structure - gazebo - basketball court - baseball diamond - school garden

History of Major Facility Improvements (10-Year)

Year	Item	Cost
2013-2014	Public Address System	\$11,204
2012-2013	Exterior front entrance and façade improvements	\$30,000
2011-2012	New classroom construction and renovations (FDK)	\$546,591
	New gym divider	\$35,000
	Backflow assessment and renovations	\$11,667
	Roof replacement	\$30,000
	Stairwell Renovations	\$100,000
2010-2011	Roof replacement	\$249,795
2009-2010	Electrical Upgrades	\$140,000
2008-2009	Open concept conversion to closed classrooms	\$451,391
	Exterior façade improvements	\$71,694
	Improved field drainage	\$40,316
2007-2008	Assembly area paving	\$40,830

Total: 1,758,488

SCHOOL INFORMATION PROFILE

Agnew H. Johnston Public School

Projected Facility Renewal Needs (5 year)

Element	Brief Description	Priority	Cost
Site Civil/Mechanical Utilities	Study	High	\$10,816
Site Civil/Mechanical Utilities	Replacement	High	\$653,016
Total	Replacement	High	\$47,320
Elevator and Lift	Replacement	High	\$113,568
Exterior Walls	Study	High	\$13,520
Exterior Walls	Repair	High	\$175,760
Terminal and Package Units	Replacement	High	\$770,640
Auxiliary Equipment-Humidifier	Replacement	High	\$10,400
Exterior Lighting	Replacement	High	\$31,096
Emergency Lighting	Replacement	High	\$31,096
Exit Lighting	Replacement	High	\$27,040
Rooftop AHU Heat	Replacement	High	\$74,880
Electric Heating System	Replacement	High	\$13,520
Air Handling Units-Central Station Units	Replacement	High	\$194,688
Domestic Water Heater	Replacement	Medium	\$40,560
Plumbing Piping System	Replacement	Medium	\$358,280
Plumbing Fixtures	Replacement	Medium	\$324,480
Exhaust System	Replacement	Medium	\$16,224
Storm Water Management	Study	Medium	\$10,816
Storm Water Management	Major Repair	Medium	\$135,200
Ceiling-Suspended Acoustic Panel	Replacement	Medium	\$193,336
Fire Alarm System	Replacement	Medium	\$62,400
Interior Stair Construction	Maintain	Medium	\$1,488
Exterior Walls	Major Repair	Medium	\$9,558
Exterior Walls	Maintain	Medium	\$2,679
Fittings	Replacement	Low	\$22,328
Fittings	Program/Upgrade	Low	\$14,884
Fittings	Major Repair	Low	\$66,982
Interior Doors	Replacement	Low	\$8,932
Parking Lots	Major Repair	Low	\$133,966
Wall Finishes	Replacement	Low	\$14,844
Playing Fields	Replacement	Low	\$29,770

Projected Total Cost: \$3,614,087

Facility Condition Index (FCI): 27.41%

Facility Condition Index is calculated by dividing the estimated cost of repairs over 5 years required in a building by the benchmark cost of a replacement facility.

5yr cost of repairs/replacement facility x 100 = FCI %

SCHOOL INFORMATION PROFILE

Agnew H. Johnston Public School

Utility Costs 2014-2015			
Total Utility Cost	Utility Cost / Student	Utility Cost / Sq.Ft.	Utility Cost / m ²
\$94,460.62	\$187.05	\$1.96	\$21.06

Parking	35 parking spots Parking is not adequate for the needs of the school.
Bus Loading Zone	Yes Loading zone is not adequate for the number of buses. Buses stage across the street and students wait in the gym after dismissal for buses to arrive which presents challenges for supervision.
Student Drop-Off Area	No

Student Transportation

Proximity of Students to School	Closest: 0.15 km Farthest: 47.1 km Average: 4.5 km		
Number of Students not Eligible for Transportation	178		
Number of Transported Students	362		
<u>Ride Times</u>	<u>Longest</u>	<u>Shortest</u>	<u>Average</u>
To	60 minutes	4 minutes	23 minutes
From	48 minutes	1 minute	19 minutes

<u>Current Accessibility</u> - Accessible parking - Automatic door opener - Elevator/Chair lift - Accessible entrance - Accessible Washroom	<u>Improvements Required</u>
--	------------------------------

SCHOOL INFORMATION PROFILE

Agnew H. Johnston Public School

Other School Use Profile

Child Care

Provider	Details	Revenue (2014-2015)	Full Cost Recovery? Y/N
Little Lions Waldorf Daycare	Before and After School - School Age - JK/SK	\$0.00	N

Program-Related Leases/Partnerships

Provider	Details	Revenue (2014-2015)	Full Cost Recovery? Y/N
N/A			

Commercial Leases

Provider	Details	Revenue (2014-2015)	Full Cost Recovery? Y/N
N/A			

Community Use (2014-15)

Details	Permitted Hours (School)	Minimum Permitted Hours (Board - Elementary)	Maximum Permitted Hours (Board - Elementary)	Average Permitted Hours (Board - Elementary)
Sports and recreation, health and wellness, child care, social events, other	31,233.75	10,386.50	36,306.00	20,003.57

**Revenue is generated through Ministry of Education Funding for community use that occurs outside of regular school hours (i.e.-when extra custodial staff is required). System-wide community use is full-cost recovery.*

Suitability for Facility Partnerships:

Space is not currently available for facility partnerships.

SCHOOL INFORMATION PROFILE

Agnew H. Johnston Public School

Floor Plan 2015-2016

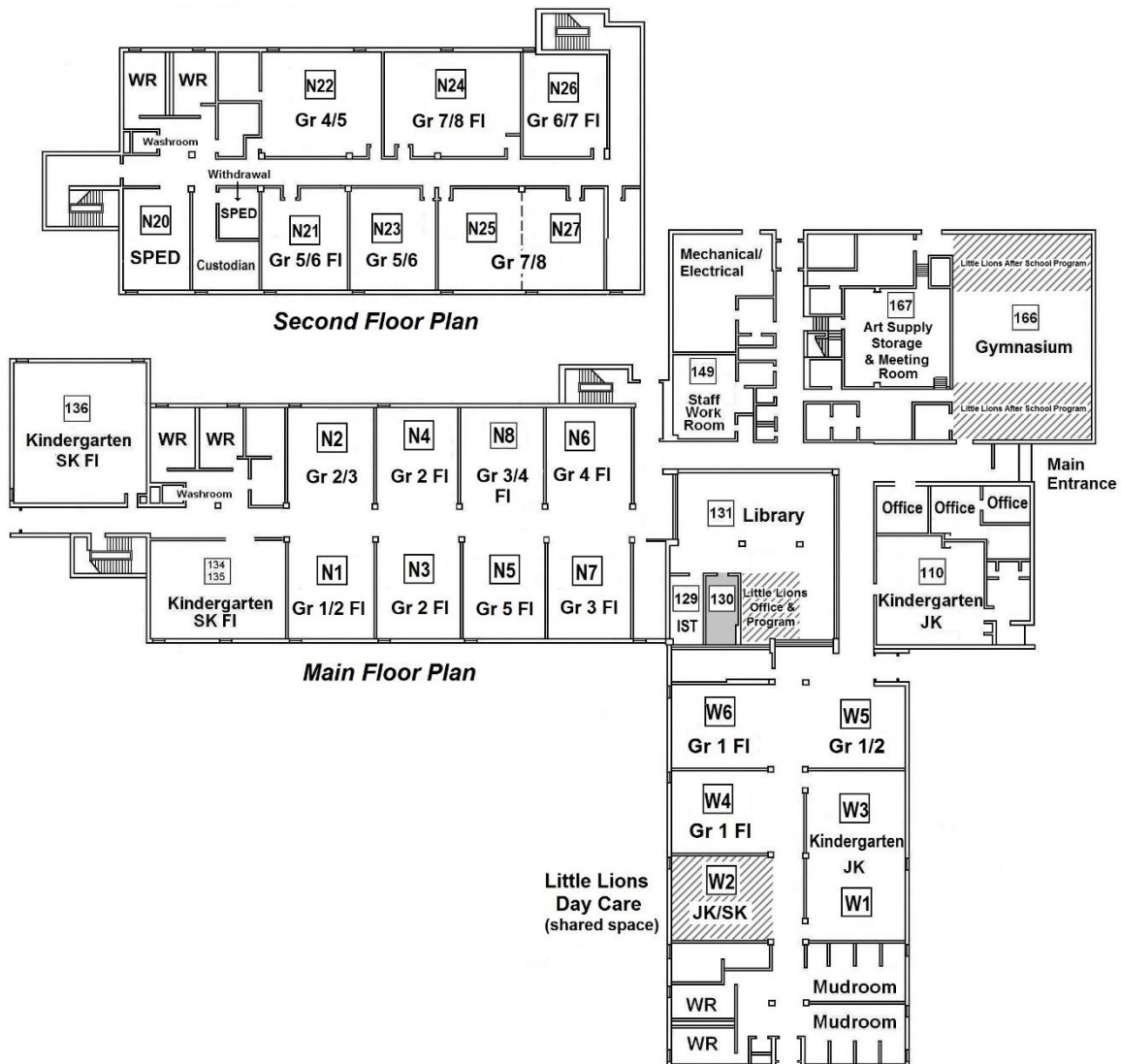
AGNEW H. JOHNSTON PUBLIC SCHOOL

(145 Churchill Drive W; M004952; SFIS 7545)

2015-2016 Room Usage

2015 OTG (On the Ground) Capacity: 530.0

2015 FC (Functional) Capacity: 530.0

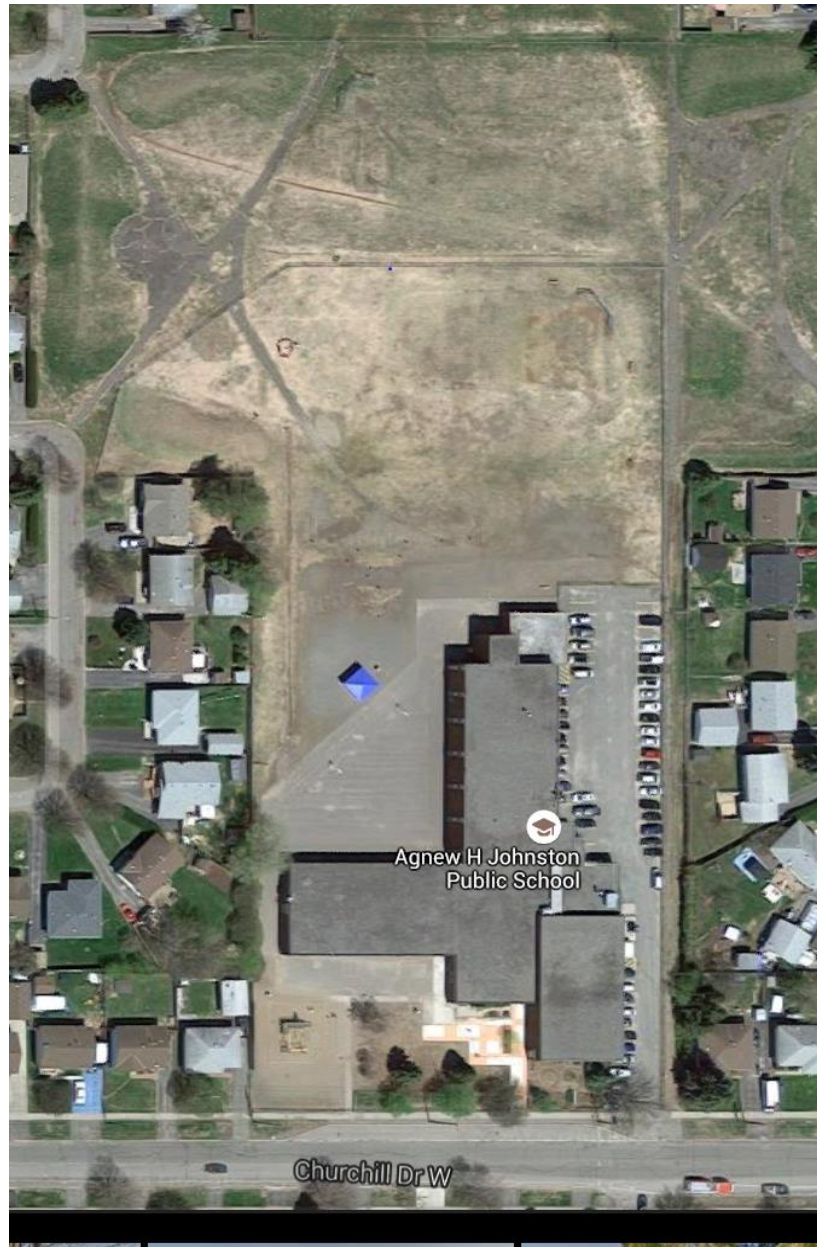


Updated: 11 Jan 2016

SCHOOL INFORMATION PROFILE

Agnew H. Johnston Public School

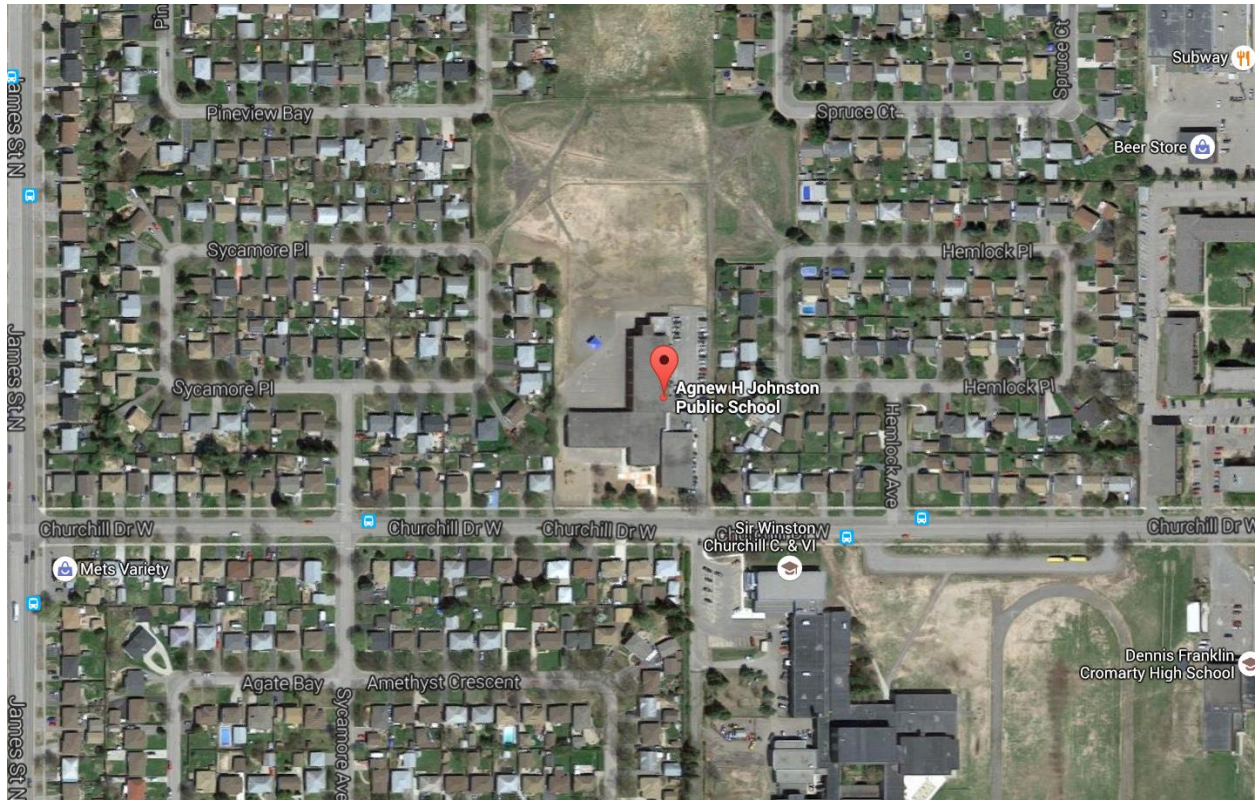
Aerial View – School Site



SCHOOL INFORMATION PROFILE

Agnew H. Johnston Public School

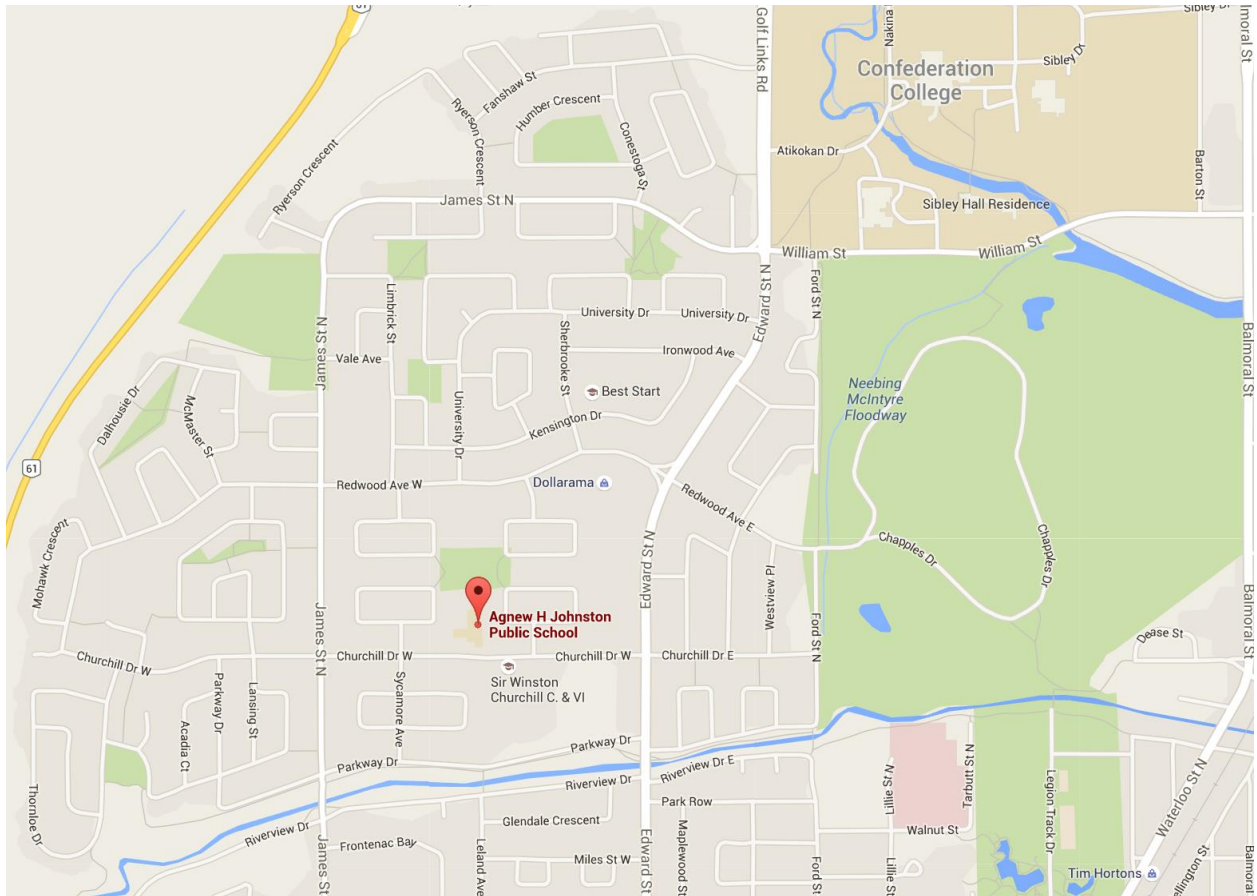
Aerial View – Neighbourhood



SCHOOL INFORMATION PROFILE

Agnew H. Johnston Public School

Street Map



SCHOOL INFORMATION PROFILE
Agnew H. Johnston Public School

School Zone Boundary Map

