



North Side Renewal Plan

School Information Profile

C.D. Howe

30 Wishart Crescent
Thunder Bay, ON
P7A 6G3

April 6, 2016



SCHOOL INFORMATION PROFILE C.D. Howe Public School

Table of Contents

Purpose.....	3
Instructional Profile.....	4
Facility Profile.....	7
Other School Use Profile.....	10
Appendices:	
A Floor Plan.....	12
B Aerial View – School Site.....	13
C Aerial View – Neighbourhood.....	14
D Street Map.....	15
E School Zone Boundary Map.....	16

SCHOOL INFORMATION PROFILE

C.D. Howe Public School

Purpose

The School Information Profiles (SIP) is prepared by board staff as an orientation document to help the Accommodation Review Committee (ARC) and the greater community understand the context surrounding the decision to include a specific school or schools in a pupil accommodation review. The SIP provides an understanding of and familiarity with the facilities under review.

The School Information Profile includes data for each of the following two considerations about the school under review:

- value to the student; and
- value to the school board.

Information is prepared as at October 31, 2015 unless otherwise indicated.



SCHOOL INFORMATION PROFILE

C.D. Howe Public School

Instructional Profile

Grade Configuration	FDK-6
Specialized Programs	Section 23

Current Grade Organization	Grade JK/SK	Number of Classes
	1	1
	2	1
	3	1
	4/5	1
	5/6	1
Number of single-grade classes	3	
Number of split-grade classes	3	

Enrolment October 31, 2015

JK	SK	1	2	3	4	5	6	Total
9	18	16	16	18	20	16	16	129

Number of out-of-boundary students <i>*For schools with French Immersion, JK students are not included.</i> <i>**Students attending system programs are not considered out-of-zone (special needs, IB, etc.)</i> <i>***Intermediate students from an FDK-6 school moving to the FDK-8 school that they are zoned for are not included.</i> <i>****For the Churchill 7-8 program, students on the North side are considered out of zone.</i>	31
Percentage of students accessing special education services <i>Source: Ministry of Education Elementary School Profile, January 2016</i> <i>*The percentage of the student population who are in special education programs or receive special education services. This includes students with identified and non-identified exceptionalities, but excludes students identified as gifted (Provincial average is 14.9%)</i>	19.1%

School capacity	236
Utilization	54.7%
<i>*School capacity and utilization are both "on-the-ground" (OTG) values.</i> <i>**The Ministry of Education calculates on-the-ground school capacity by assigning a loading to each category of instructional space identified (e.g. classroom, science lab), based on the number of pupils that can reasonably be accommodated in each category of instructional space. The sum of all the loading in the instructional space within a facility is its capacity.</i> <i>***Utilization is calculated by dividing the enrolment of the school by its capacity.</i>	

SCHOOL INFORMATION PROFILE

C.D. Howe Public School

Enrolment History

Year	Enrolment
2010-2011	160
2011-2012	147
2012-2013	152
2013-2014	149
2014-2015	150
2015-2016	129

Enrolment Projections

Year	Enrolment
2016-2017	123
2017-2018	116
2018-2019	107
2019-2020	101
2020-2021	94
2021-2022	87
2022-2023	81
2023-2024	82
2024-2025	80
2025-2026	78

SCHOOL INFORMATION PROFILE

C.D. Howe Public School

Staff

Teaching Staff	Classroom Teacher	6.0	
	Facilitator	0.5	
	Itinerant Teacher	1.114	
	Section 23	1.0	
	Early Childhood Educator	1.0	
			Total: 9.614
Support Staff	Student Support Professional	3.0	
	Information Services Technician	0.25	
	Custodial	1.5	
			Total: 4.75
Administrative Staff	Principal	1.0	
	Vice-Principal	N/A	
	Secretarial	1.0	
			Total: 2.0

Extra-Curricular and Co-Curricular Opportunities for Students

- Lakehead Elementary Athletics
- Creative Movement Jamboree
- Breakfast program
- OFIP tutors and Tutors in the Classroom
- Concerts
- Student council
- Circle of Wellness
- Roots of Empathy
- We Stand Up



SCHOOL INFORMATION PROFILE

C.D. Howe Public School

Facility Profile

Date of Construction

Original Building	1958
Additions	1961, 1975

Size of school site	5.3 acres / 2.13 hectares
Building area	36,210 sq.ft. / 3364.0 m ²
Number of Portable Classrooms	0
Number of Classrooms and Specialized Teaching Spaces	<ul style="list-style-type: none"> - 2 FDK Classrooms - 7 Classrooms - Gymnasium - Library - Computer Lab
Playground Area	Approximately 4 acres
Outdoor Features	<ul style="list-style-type: none"> - play structure - track - baseball diamonds

History of Major Facility Improvements (10-Year)

Year	Item	Cost
2013-2014	Exterior sidewalk improvements	\$48,000
	Heating and ventilation upgrades	\$302,725
2012-2013	Backflow assessment and renovations	\$10,000
2011-2012	Electrical distribution upgrade	\$70,705
2009-2010	Exterior façade improvements	\$37,500
2006-2007	Renovations to reduce energy consumption	\$160,000

Total Cost: \$628,930

Projected Facility Renewal Needs (5 year)

Element	Brief Description	Priority	Cost
Standpipe Systems	Replacement	High	\$59,488
Fire Alarm Systems	Replacement	High	\$94,120
Heating Water Distribution System – Heating Piping System – Original Building and Addition 1	Replacement	High	\$784,160
Gas Supply System	Replacement	High	74,360
Exhaust Systems	Replacement	Medium	\$40,560
Interior Doors – Hollow Metal – Original Building and Additions 1 & 2	Replacement	Medium	\$18,928

SCHOOL INFORMATION PROFILE

C.D. Howe Public School

Exterior Walls	Replacement	Medium	\$14,884
Exterior Walls	Replacement	Medium	\$14,884
Emergency Lighting	Replacement	Low	\$0
Plumbing fixtures – Original Building, Additions 1 & 2	Replacement	Low	\$243,360
Floor Finishes	Replacement	Low	\$22,328
Fittings	Replacement	Low	\$74,426
Pedestrian Paving	Replacement	Low	\$59,540
Partitions	Study – Consulting Services	Low	\$23,852
Partitions	Program/Upgrade – Day Care	Low	\$186,523
Partitions	Code-related Event – Asbestos Abatement Day Care	Low	\$86,644
Site Development	Program/Upgrade – Day Care	Low	\$274,589

Projected Total Cost: \$1,134,878

Facility Condition Index (FCI): 67.11%

Facility Condition Index is calculated by dividing the estimated cost of repairs over 5 years required in a building by the benchmark cost of a replacement facility.

5yr cost of repairs/replacement facility x 100 = FCI %

Utility Costs 2014-2015			
Total Utility Cost	Utility Cost / Student	Utility Cost / Sq.Ft.	Utility Cost / m ²
\$31,293.46	\$242.58	\$0.86	\$9.30

Parking	35 parking spots Parking is not adequate for the needs of the school and day care.
Bus Loading Zone	Yes Loading zone is adequate for the needs of the school.
Student Drop-Off Area	No

SCHOOL INFORMATION PROFILE

C.D. Howe Public School

Student Transportation

Proximity of Students to School	Closest: 0.07 km Farthest: 16.3 km Average: 2.0 km		
Number of Students not Eligible for Transportation	80		
Number of Transported Students	69		
<u>Ride Times</u>	<u>Longest</u>	<u>Shortest</u>	<u>Average</u>
To	32 minutes	5 minutes	12 minutes
From	26 minutes	1 minute	9 minutes

<u>Current Accessibility</u> - Accessible parking	<u>Improvements Required</u> - Automatic door opener - Elevator/Chair lift - Accessible entrance - Accessible Washroom
--	--

SCHOOL INFORMATION PROFILE

C.D. Howe Public School

Other School Use Profile

Child Care

Provider	Details	Revenue (2014-2015)	Full Cost Recovery? Y/N
Harbour View Child Care Center	- Full day: infant, toddler, pre-school - Before and After School: JK/SK, school age	\$50,981.88	Y

Program-Related Leases/Partnerships

Provider	Details	Revenue (2014-2015)	Full Cost Recovery? Y/N
Section 23 Children's Centre Thunder Bay	Intensive, multi-disciplinary assessment for students experiencing behavioural difficulties in the home and school. Students receive individualized academic programming for numeracy and literacy.	\$5,729.06	N

Commercial Leases

Provider	Details	Revenue (2014-2015)	Full Cost Recovery? Y/N
N/A			

SCHOOL INFORMATION PROFILE

C.D. Howe Public School

Community Use (2014-15)

Details	Permitted Hours (School)	Minimum Permitted Hours (Board - Elementary)	Maximum Permitted Hours (Board - Elementary)	Average Permitted Hours (Board - Elementary)
Educational, sports and recreation, health and wellness, child care, arts and cultural, social, leadership, other	19,363.0	10,386.50	36,306.00	20,003.57

**Revenue is generated through Ministry of Education Funding for community use that occurs outside of regular school hours (i.e.-when extra custodial staff is required). System-wide community use is full-cost recovery.*

Suitability for Facility Partnerships:

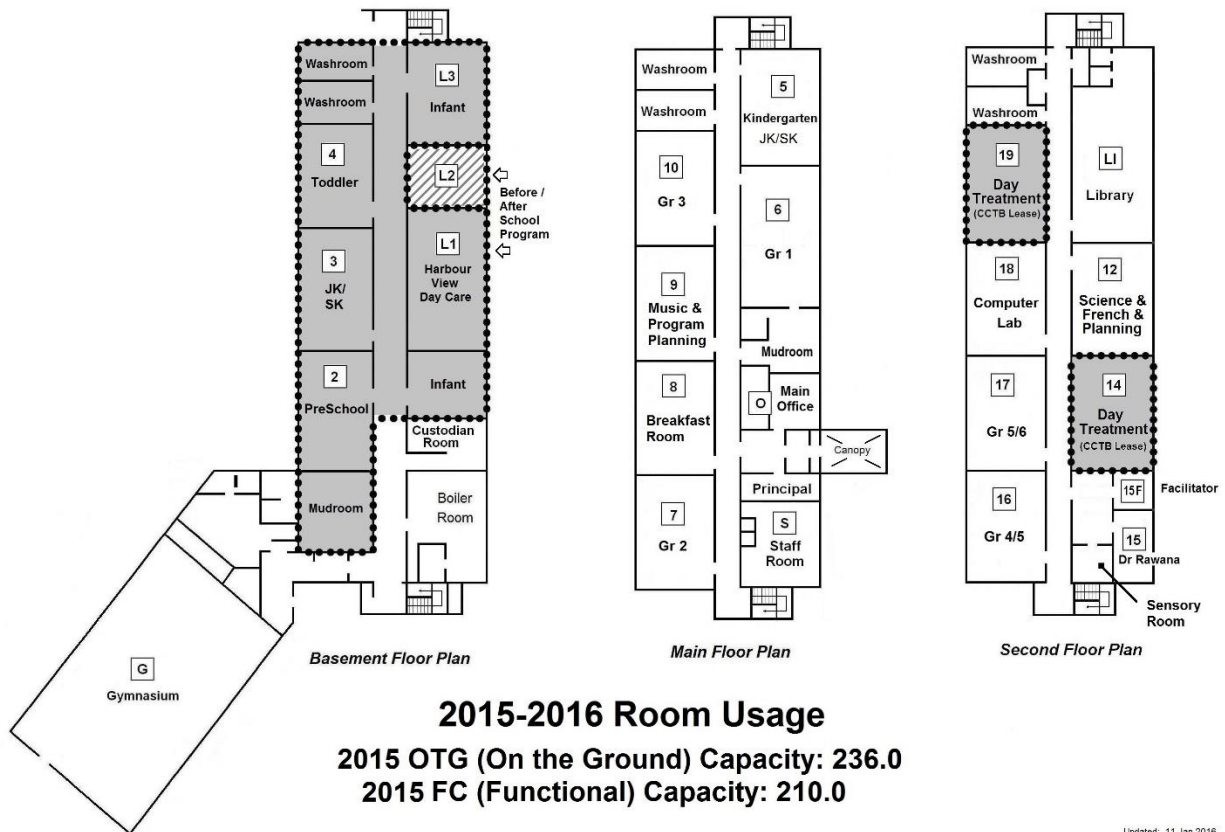
Space is available for potential facility partnerships.

SCHOOL INFORMATION PROFILE

C.D. Howe Public School

Floor Plan 2015-2016

C.D. HOWE PUBLIC SCHOOL
(30 Wishart Crescent; M072877; SFIS 7548)



Updated: 11 Jan 2016

SCHOOL INFORMATION PROFILE
C.D. Howe Public School

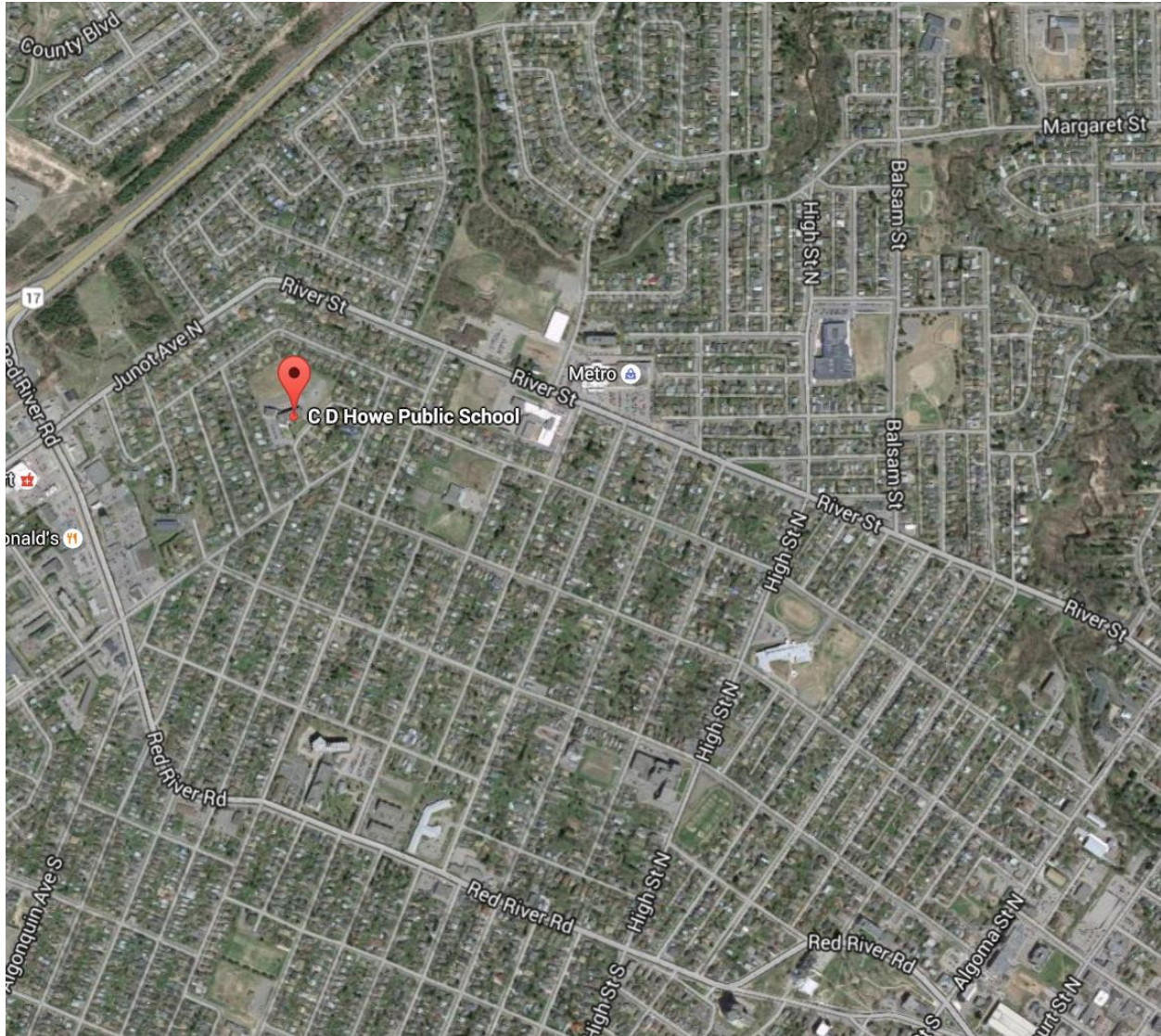
Aerial View – School Site



SCHOOL INFORMATION PROFILE

C.D. Howe Public School

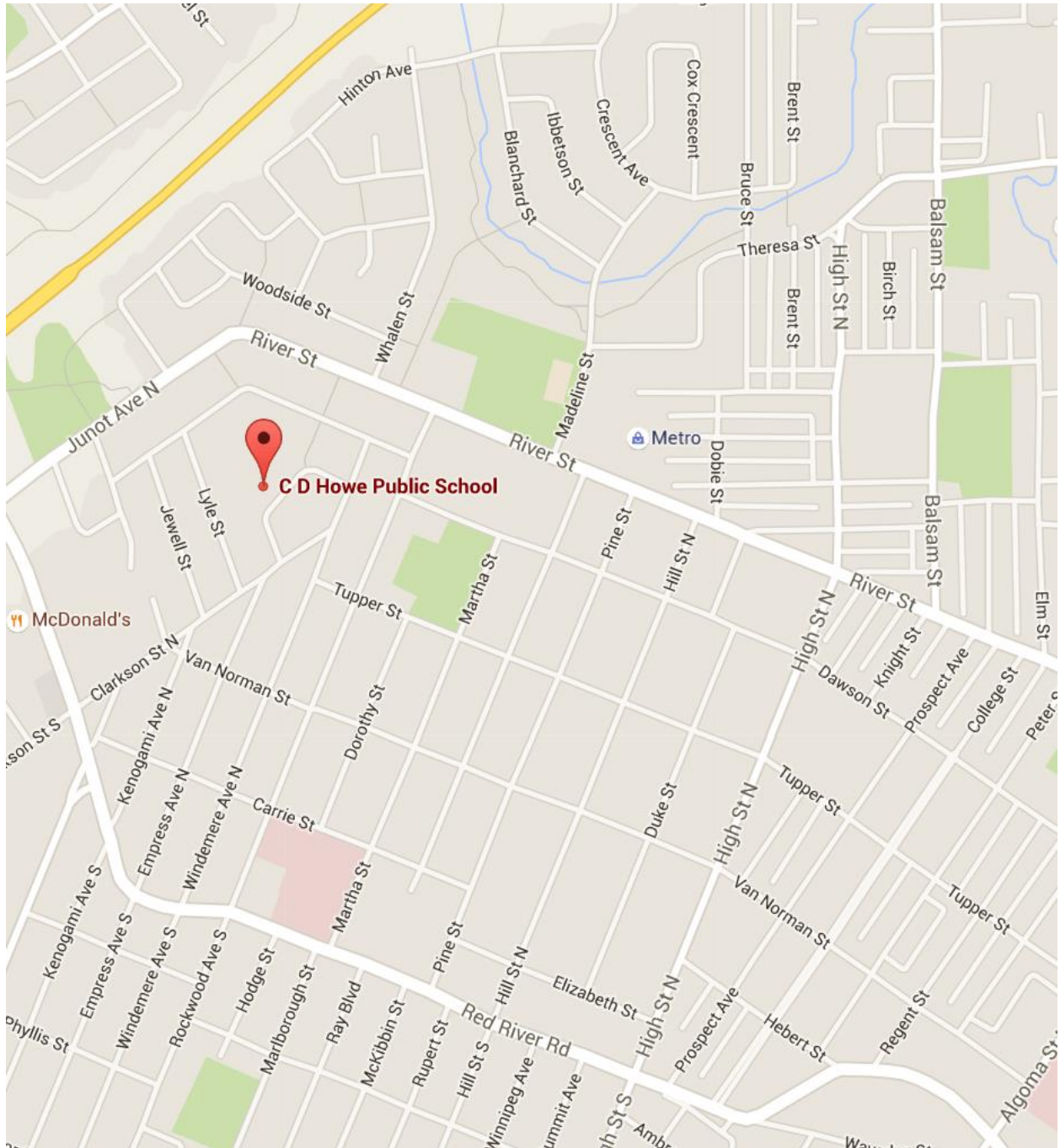
Aerial View – Neighbourhood



SCHOOL INFORMATION PROFILE

C.D. Howe Public School

Street Map



SCHOOL INFORMATION PROFILE C.D. Howe Public School

School Zone Boundary Map

