



South Side Renewal Plan

School Information Profile

Sir Winston Churchill Collegiate and Vocational Institute

130 West Churchill Drive
Thunder Bay, ON
P7C 1V5

April 6, 2016



SCHOOL INFORMATION PROFILE

Sir Winston Churchill Collegiate & Vocational Institute

Table of Contents

Purpose.....	3
Instructional Profile.....	4
Facility Profile.....	9
Other School Use Profile.....	13
Appendices:	
A Floor Plan.....	14
B Aerial View – School Site.....	16
C Aerial View – Neighbourhood.....	17
D Street Map.....	18

SCHOOL INFORMATION PROFILE

Sir Winston Churchill Collegiate & Vocational Institute

Purpose

The School Information Profiles (SIP) is prepared by board staff as an orientation document to help the Accommodation Review Committee (ARC) and the greater community understand the context surrounding the decision to include a specific school or schools in a pupil accommodation review. The SIP provides an understanding of and familiarity with the facilities under review.

The School Information Profile includes data for each of the following two considerations about the school under review:

- value to the student; and
- value to the school board.

Information is prepared as at October 31, 2015 unless otherwise indicated.





SCHOOL INFORMATION PROFILE

Sir Winston Churchill Collegiate & Vocational Institute

Instructional Profile

Grade Configuration	7-12
Specialized Programs	International Baccalaureate

Current Grade Organization	<u>Elementary:</u> Grade 7 – 2 classes Grade 8 – 2 classes <u>Secondary:</u> Grade organization changes based on course offerings.
----------------------------	--

Enrolment (Number of Students) *October 31, 2015*

	Gr. 7	Gr. 8	Gr. 9	Gr. 10	Gr. 11	Gr. 12	Total Enrolment
Elementary	54	57	-	-	-	-	111
Secondary	-	-	128	126	145	181	580
International Baccalaureate	-	-	38	36	39	23	136
Total	54	57	166	162	184	204	827

Secondary Enrolment (FTE): 705.25

October 31, 2015

Lakehead District School Board Feeder Schools / Family of Schools	Agnew H. Johnston – English Edgewater Park McKellar Park Ogden Community Sherbrooke Sir Winston Churchill Elementary
Number of out-of-boundary students - <u>Elementary</u> <i>*For schools with French Immersion, JK students are not included.</i> <i>**Students attending system programs are not considered out-of-zone (special needs, IB, etc.)</i> <i>***Intermediate students from an FDK-6 school moving to the FDK-8 school that they are zoned for are not included.</i> <i>****For the Churchill 7-8 program, students on the North side are considered out of zone.</i>	6
Number of out-of-boundary students - <u>Secondary</u> <i>*Students entering Grade 9 from a school other than a designated feeder school</i> <i>**Students entering Grade 9 from a coterminous school that would not be designated a feeder school, based on location of elementary school zones</i>	40

SCHOOL INFORMATION PROFILE

Sir Winston Churchill Collegiate & Vocational Institute

Percentage of students accessing special education services <i>Source: Ministry of Education Elementary School Profile, January 2016</i> <i>*The percentage of the student population who are in special education programs or receive special education services. This includes students with identified and non-identified exceptionalities, but excludes students identified as gifted (Provincial average is 14.9%)</i>	15%
---	-----

School capacity (Elementary and Secondary)	1062
Utilization (FTE)	76.8%
<i>*School capacity and utilization are both "on-the-ground" (OTG) values.</i> <i>**The Ministry of Education calculates on-the-ground school capacity by assigning a loading to each category of instructional space identified (e.g. classroom, science lab), based on the number of pupils that can reasonably be accommodated in each category of instructional space. The sum of all the loading in the instructional space within a facility is its capacity.</i> <i>***Utilization is calculated by dividing the enrolment of the school by its capacity.</i>	

Elementary Enrolment History

Year	Enrolment (FTE – Full-time Equivalent)
2010-2011	157
2011-2012	209
2012-2013	192
2013-2014	124
2014-2015	127
2015-2016	111

Secondary Enrolment History

Year	Enrolment (FTE – Full-time Equivalent)
2010-2011	1,003.65
2011-2012	947.15
2012-2013	896.84
2013-2014	857.78
2014-2015	769.53
2015-2016	705.25

SCHOOL INFORMATION PROFILE

Sir Winston Churchill Collegiate & Vocational Institute

Elementary Enrolment Projections

Year	Enrolment
2016-2017	117
2017-2018	113
2018-2019	102
2019-2020	107
2020-2021	114
2021-2022	109
2022-2023	109
2023-2024	96
2024-2025	87
2025-2026	91

Secondary Enrolment Projections (FTE)

Year	Enrolment
2016-2017	628.01
2017-2018	562.03
2018-2019	554.17
2019-2020	537.65
2020-2021	532.97
2021-2022	542.66
2022-2023	528.51
2023-2024	521.68
2024-2025	535.04
2025-2026	494.72

SCHOOL INFORMATION PROFILE

Sir Winston Churchill Collegiate & Vocational Institute

Staff February 1, 2016

Elementary Teaching Staff	Classroom Teacher Facilitator Itinerant Teacher	4.0 0.5 1.168 Total: 5.568
Secondary Teaching Staff	Classroom Teachers Facilitator Guidance IB Coordinator Student Success In-School Alternative Education Co-operative Education Native Studies Library ESL Itinerant Kickstart	37.587 1.333 1.83 1.0 2.0 1.0 1.667 1.5 0.667 1.0 0.333 Total: 49.917
Support Staff	Student Support Professional Library Technician Custodial	6.0 1.0 6.5 Total: 13.5
Administrative Staff	Principal Vice-Principal Secretarial	1.0 1.405 4.0 Total: 6.405

Extra-Curricular and Co-Curricular Opportunities for Students

Elementary

<ul style="list-style-type: none"> • Lakehead Elementary Athletics • Breakfast Program • Lunch Program • After School Program • Biwaase'aa Aboriginal Program • Little Eagles Program • Tutors in the Classroom • Music Lessons • Drumming Group • After school Drumming Group • Student Council • Skills Canada – Cardboard Boat Races • H.O.P. (Hub Opportunity Program) • Skating 	<ul style="list-style-type: none"> • Kingfisher • Thunder Bay Art Gallery • Regional Food Distribution Association • Health Unit • Science North • Elementary Sports • Cheerleading • We Stand Up • Robotics • Video Game Design • Girls Group • Boys Group • Girls Group with Social work students and CAHEP
--	--

SCHOOL INFORMATION PROFILE

Sir Winston Churchill Collegiate & Vocational Institute

<ul style="list-style-type: none"> • Learning Through the Arts • Reach Ahead Program 	<ul style="list-style-type: none"> • Gay Straight Alliance
--	---

Extra-Curricular and Co-Curricular Opportunities for Students

Secondary

<ul style="list-style-type: none"> • SSSAA Sports • Anime Club • Art Club • Breakfast Program • Come As You Are: Student Mentoring • Concert Band Jr • Concert Band Sr • Crime Stoppers • Doctors Without Borders • Dungeons and Dragons • Envirothon • Field Cheerleading • Gardening Club • Gay Straight Alliance • Girls Group • Glee 	<ul style="list-style-type: none"> • Grad Committee • IB student Advisory Group • Jazz Band • Model UN • National Biology Competition • Natural Helpers • Robotics • School Musical • Semi- Formal • Student Government – Exec • Student Government – Student Body • Video Game Design • Travel Club • Waterloo Math Contest • We Stand Up • Yearbook
--	---

SCHOOL INFORMATION PROFILE

Sir Winston Churchill Collegiate & Vocational Institute

Facility Profile

Date of Construction

Original Building	1961
Additions	1974, 1992, 2005

Size of school site	17.3 acres / 7 hectares
Building area	150,296 sq.ft. / 13,963 m ²
Number of Portable Classrooms	0
Number of Classrooms and Specialized Teaching Spaces	<ul style="list-style-type: none"> - 1 Music Room - 8 Broad-based Technology Rooms - 30 Classrooms - Gymnasium - 1 Exercise Room - Library - 5 Computer Labs - 5 Science Labs
Field Area	Approximately 15 acres
Outdoor Features	<ul style="list-style-type: none"> - track - courtyard

History of Major Facility Improvements (10-Year)

Year	Item	Cost
2013-2014	Main floor washroom renovation	\$120,000
2012-2013	New gym dividers	\$35,000
	Partial locker replacement	\$30,000
2011-2012	Front entrance and façade improvements	\$50,000
	Backflow assessments and renovations	\$11,667
	Stairwell renovations	\$100,000
2010-2011	Solarwalls installation	\$1,200,000
2009-2010	Technology ventilation for plasma cutter	\$60,000
	Technology wing electrical upgrades	\$140,000
2008-2009	Science lab upgrades and Computer technology labs conversion	\$982,499
	Technology ventilation upgrade	\$450,633
2006-2007	Water main replacement	\$38,400
	New public address systems	\$36,000
2004-2005	Six classroom addition (Churchill Elementary)	\$1,387,000

Total Cost: \$4,641,199

SCHOOL INFORMATION PROFILE

Sir Winston Churchill Collegiate & Vocational Institute

Projected Facility Renewal Needs (5 year)

Element	Brief Description	Priority	Cost
Main Transformers	Replacement	Urgent	\$37,440
Heating water distribution systems - Heating Piping Systems - Original Building	Replacement	High	\$1,095,432
Secondary Transformers - Original Building	Replacement	High	\$100,048
Gas Supply System - Original Building and Addition 1	Replacement	High	\$33,800
Exterior Walls - Brick Veneer - Original Building & Additions 1, 2 and 3	Major Repair	High	\$338,000
Auxiliary Equipment - Expansion Tanks - Original Building	Replacement	High	\$13,520
Lighting Equipment - Emergency Lighting - Original Building and Addition 1	Replacement	High	\$105,456
Controls & Instrumentation - Control Systems - Original Building and Addition 1	Replacement	High	\$324,480
Lighting Equipment - Exterior Lighting - Pole Mounted - Original Building and Addition 1	Replacement	High	\$48,672
Air Handling Units	Replacement	High	\$243,360
Domestic Water Distribution - Plumbing Pumps - Original Building and Addition 1 & 2	Replacement	High	\$13,520
Plumbing Fixtures - Original Building and Addition 1	Replacement	Medium	\$194,688
Domestic Water Distribution - Plumbing Piping Systems - Original Building	Replacement	Medium	\$953,160
Air Distribution, Heating & Cooling - Duct System - Original Building and Addition 1	Replacement	Medium	\$1,892,800
Exhaust Systems - Original Building and Addition 1 & 2	Replacement	Medium	\$40,560
Interior Doors - Hollow Metal - Original Building & Additions 1, 2 and 3	Replacement	Medium	\$43,264
Standpipe Systems - Original Building	Replacement	Medium	\$45,656
Main Switchboards	Study	Medium	\$10,400

SCHOOL INFORMATION PROFILE

Sir Winston Churchill Collegiate & Vocational Institute

Main Switchboards	Replacement	Medium	\$37,440
Main Switchboards	Replacement	Medium	\$223,276
Heating/Chilling water distribution systems - (Main Building)	Replacement - Asset Reconstruction	Medium	\$0
Fencing & Gates - (Main Building)	Replacement - Component Reconstruction	Low	\$25,304
Terminal & Package Units - (Main Building)	Replacement - Asset Reconstruction	Low	\$0
Controls & Instrumentation - (Main Building)	Replacement - Asset Reconstruction	Low	\$0
Domestic Water Distribution - (Main Building)	Replacement - Component Reconstruction	Low	\$74,880
Domestic Water Distribution - (Main Building)	Replacement - Component Reconstruction	Low	\$0
Domestic Water Distribution - (Main Building)	Replacement - Component Reconstruction	Low	\$15,600
Domestic Water Distribution - Domestic Water Heater - Original Building and Addition 1 & 2	Replacement	Low	\$22,880
Floor Finishes	Replacement	Low	\$44,656
Ceiling Finishes	Replacement	Low	\$14,884
Ceiling Finishes	Replacement	Low	\$7,443
Ceiling Finishes - on Ceiling	Replacement	Low	\$29,770
Wall Finishes - Addition 3	Replacement	Low	\$19,498
Landscaping - (Main Building)	Upgrade	Low	\$55,075

Projected Total Cost: \$6,104,962

Facility Condition Index (FCI): 67.61%

Facility Condition Index is calculated by dividing the estimated cost of repairs over 5 years required in a building by the benchmark cost of a replacement facility.

5yr cost of repairs/replacement facility x 100 = FCI %

Utility Costs 2014-2015			
Total Utility Cost	Utility Cost / Student	Utility Cost / Sq.Ft.	Utility Cost / m ²
\$180,368.16	\$192.70	\$1.20	\$12.92

SCHOOL INFORMATION PROFILE

Sir Winston Churchill Collegiate & Vocational Institute

Parking	80 staff spaces + 45 student spaces Staff parking is adequate. Student parking is not adequate.
Bus Loading Zone	Yes Bus loading zone is adequate for student needs
Student Drop-Off Area	No Traffic is chaotic when students are dropped off.

Student Transportation

Proximity of Students to School	Closest: 0.2 km Farthest: 59.4 km Average: 6.7 km		
Number of Students not Eligible for Transportation	469		
Number of Transported Students	540		
<u>Ride Times</u>	<u>Longest</u>	<u>Shortest</u>	<u>Average</u>
To	121 minutes	3 minutes	23 minutes
From	111 minutes	1 minute	22 minutes

<u>Current Accessibility</u> - Accessible parking - Automatic door opener - Accessible Washroom - Elevator/Chair lift - Interior ramps - Accessible alternate entrance	<u>Improvements Required</u>
--	------------------------------

SCHOOL INFORMATION PROFILE

Sir Winston Churchill Collegiate & Vocational Institute

Other School Use Profile

Child Care

Provider	Details	Revenue (2014-2015)	Full Cost Recovery? Y/N
N/A			

Program-Related Leases/Partnerships

Provider	Details	Revenue (2014-2015)	Full Cost Recovery? Y/N
N/A			

Commercial Leases

Provider	Details	Revenue (2014-2015)	Full Cost Recovery? Y/N
N/A			

Community Use (2014-15)

Details	Permitted Hours (School)	Minimum Permitted Hours (Board - Secondary)	Maximum Permitted Hours (Board - Secondary)	Average Permitted Hours (Board - Secondary)
Educational, sports and recreation, arts and cultural, supports for recent immigrants, social, meetings, leadership, other	23,661.0	23,661.0	37,816.0	29,470.13

**Revenue is generated through Ministry of Education Funding for community use that occurs outside of regular school hours (i.e.-when extra custodial staff is required). System-wide community use is full-cost recovery.*

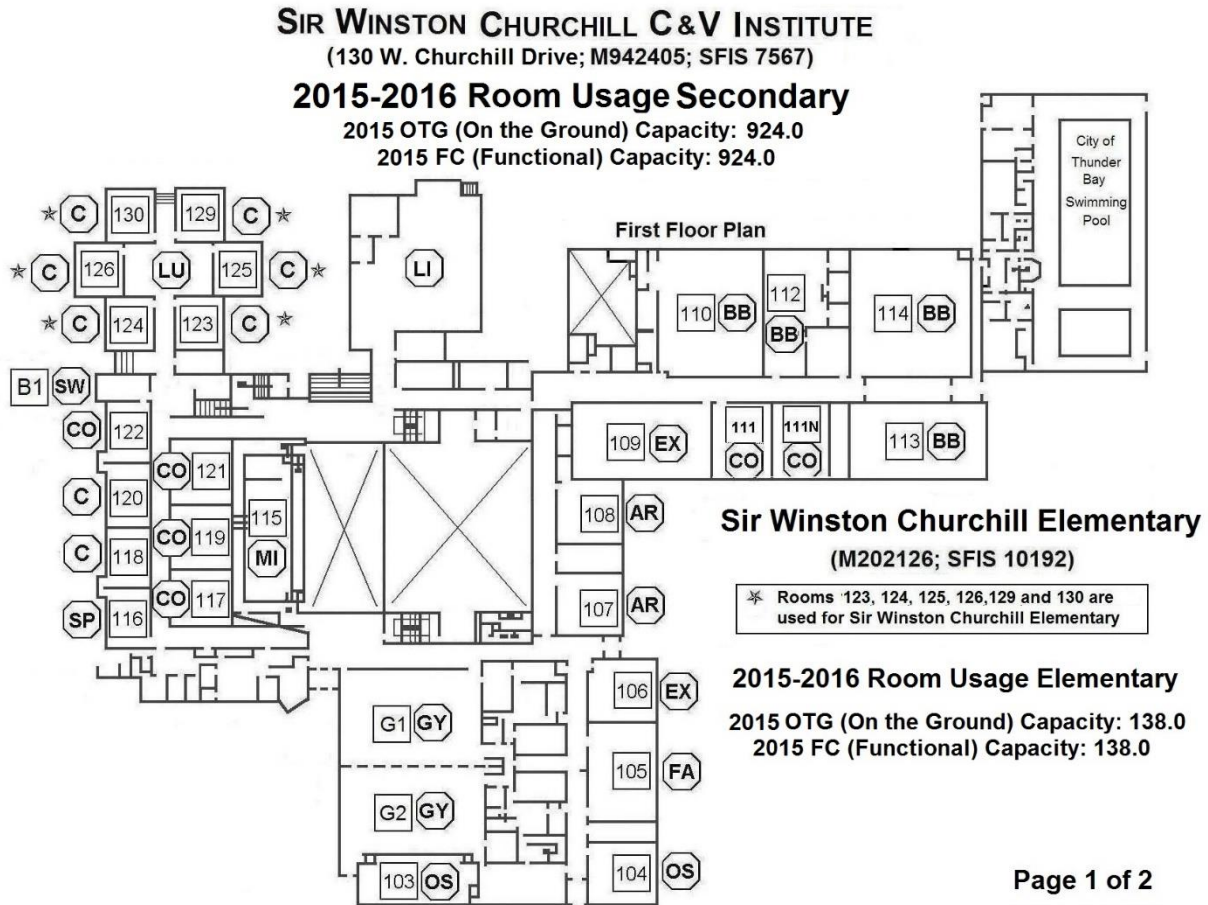
Suitability for Facility Partnerships:

Space is available for potential facility partnerships.

SCHOOL INFORMATION PROFILE

Sir Winston Churchill Collegiate & Vocational Institute

Floor Plan 2015-2016



SCHOOL INFORMATION PROFILE

Sir Winston Churchill Collegiate & Vocational Institute

SIR WINSTON CHURCHILL C&V INSTITUTE

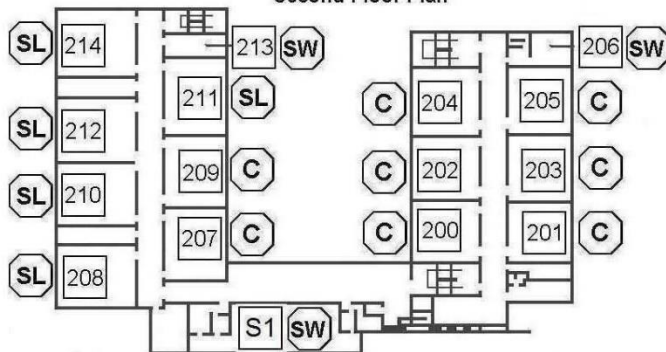
(130 W. Churchill Drive; M942405; SFIS 7567)

2015-2016 Room Usage Secondary

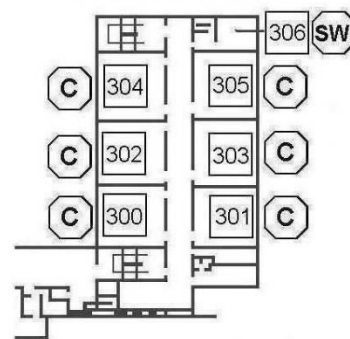
2015 OTG (On the Ground) Capacity: 924.0

2015 FC (Functional) Capacity: 924.0

Second Floor Plan



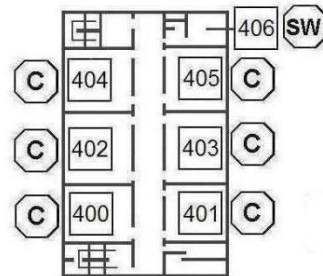
Third Floor Plan



Basement Floor Plan

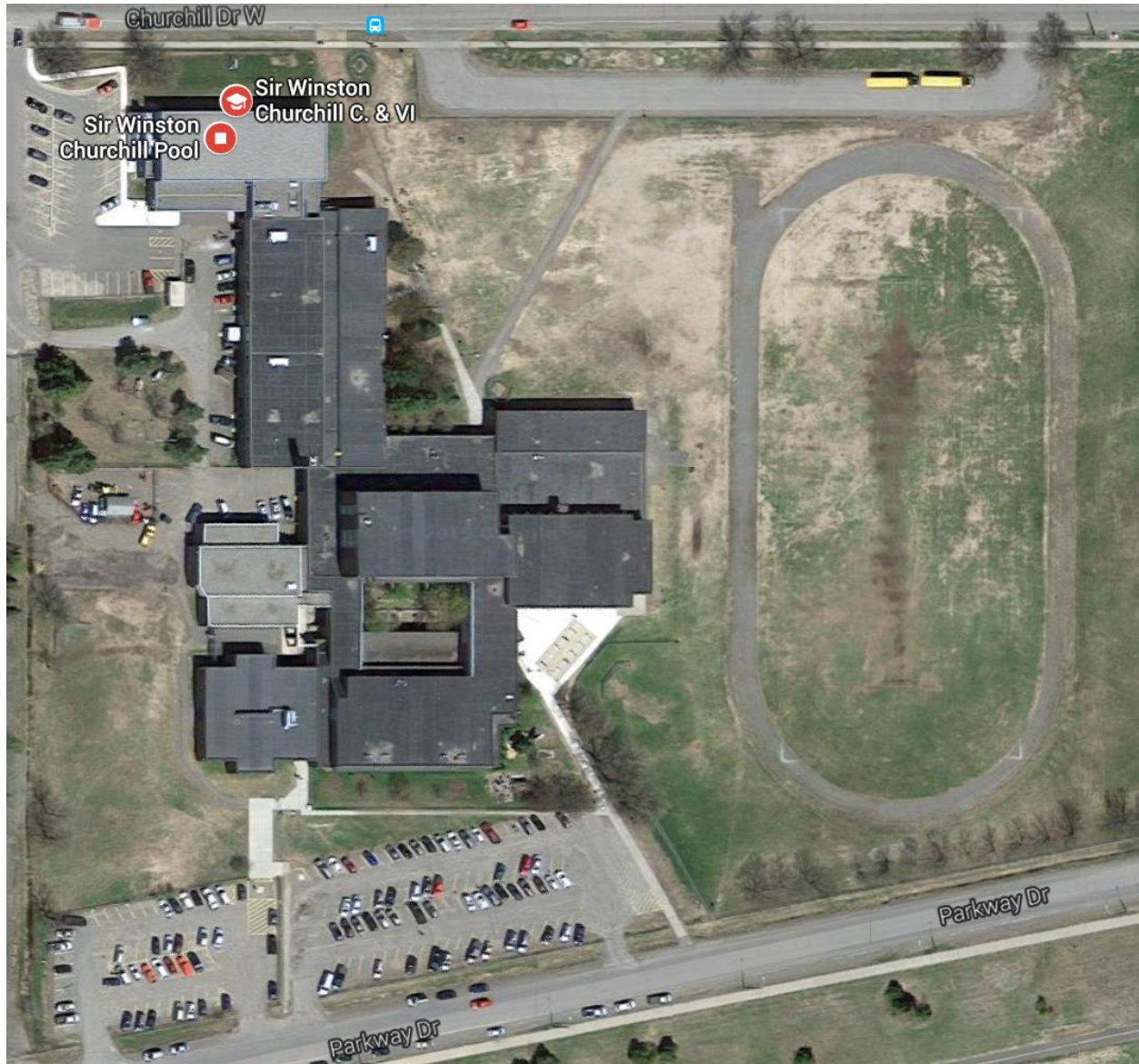


Fourth Floor Plan



SCHOOL INFORMATION PROFILE
Sir Winston Churchill Collegiate & Vocational Institute

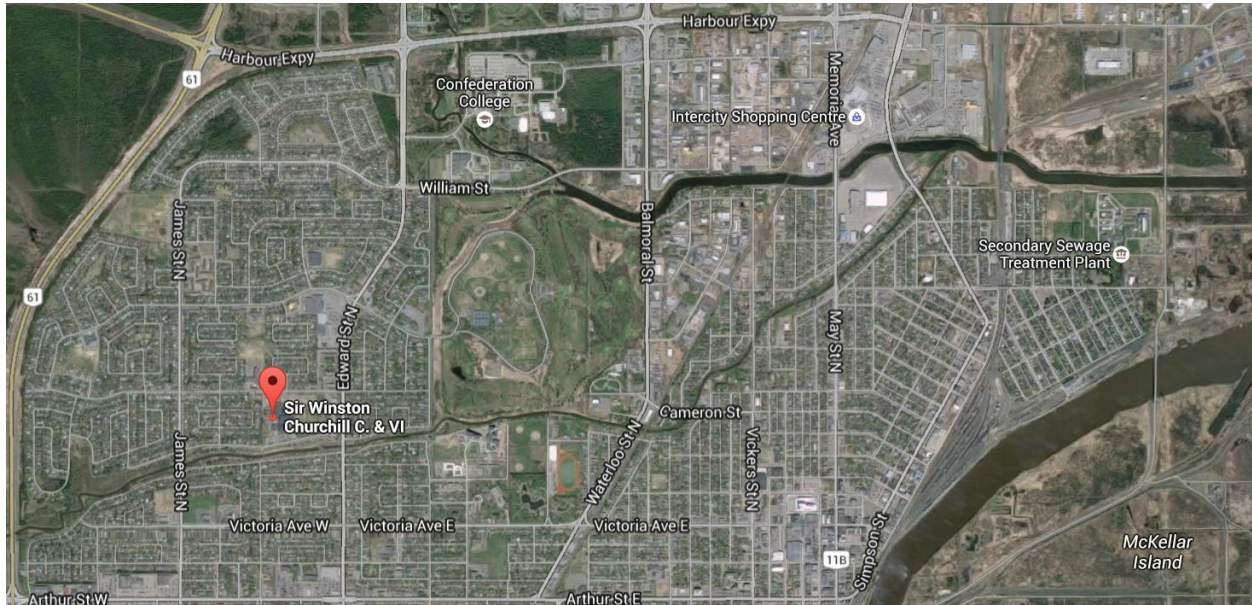
Aerial View – School Site



SCHOOL INFORMATION PROFILE

Sir Winston Churchill Collegiate & Vocational Institute

Aerial View – Neighbourhood



SCHOOL INFORMATION PROFILE

Sir Winston Churchill Collegiate & Vocational Institute

Street Map

