



South Side Renewal Plan

School Information Profile

Edgewater Park

511 West Victoria Avenue
Thunder Bay, ON
P7C 1H2

April 6, 2016



SCHOOL INFORMATION PROFILE

Edgewater Park Public School

Table of Contents

Purpose.....	3
Instructional Profile.....	4
Facility Profile.....	7
Other School Use Profile.....	10
Appendices:	
A Floor Plan.....	12
B Aerial View – School Site.....	13
C Aerial View – Neighbourhood.....	14
D Street Map.....	15
E School Zone Boundary Map.....	16

SCHOOL INFORMATION PROFILE

Edgewater Park Public School

Purpose

The School Information Profiles (SIP) is prepared by board staff as an orientation document to help the Accommodation Review Committee (ARC) and the greater community understand the context surrounding the decision to include a specific school or schools in a pupil accommodation review. The SIP provides an understanding of and familiarity with the facilities under review.

The School Information Profile includes data for each of the following two considerations about the school under review:

- value to the student; and
- value to the school board.

Information is prepared as at October 31, 2015 unless otherwise indicated.



SCHOOL INFORMATION PROFILE

Edgewater Park Public School

Instructional Profile

Grade Configuration	FDK-8
Specialized Programs	Section 23

Current Grade Organization	<u>Grade</u>	<u>Number of Classes</u>
	JK/SK	1
	SK/1	1
	1/2	1
	2/3	1
	3/4	1
	4/5	1
	6/7	1
	7/8	1
Number of single-grade classes	0	
Number of split-grade classes	8	

Enrolment October 31, 2015

JK	SK	1	2	3	4	5	6	7	8	Total
20	22	22	10	20	21	19	22	18	19	193

Number of out-of-boundary students <i>*For schools with French Immersion, JK students are not included.</i> <i>**Students attending system programs are not considered out-of-zone (special needs, IB, etc.)</i> <i>***Intermediate students from an FDK-6 school moving to the FDK-8 school that they are zoned for are not included.</i> <i>****For the Churchill 7-8 program, students on the North side are considered out of zone.</i>	63
Percentage of students accessing special education services <i>Source: Ministry of Education Elementary School Profile, January 2016</i> <i>*The percentage of the student population who are in special education programs or receive special education services. This includes students with identified and non-identified exceptionalities, but excludes students identified as gifted (Provincial average is 14.9%)</i>	15%

SCHOOL INFORMATION PROFILE

Edgewater Park Public School

School capacity	248
Utilization	77.8%
<p><i>*School capacity and utilization are both “on-the-ground” (OTG) values.</i></p> <p><i>**The Ministry of Education calculates on-the-ground school capacity by assigning a loading to each category of instructional space identified (e.g. classroom, science lab), based on the number of pupils that can reasonably be accommodated in each category of instructional space. The sum of all the loading in the instructional space within a facility is its capacity.</i></p> <p><i>***Utilization is calculated by dividing the enrolment of the school by its capacity.</i></p>	

Enrolment History

Year	Enrolment
2010-2011	226
2011-2012	211
2012-2013	193
2013-2014	195
2014-2015	195
2015-2016	193

Enrolment Projections

Year	Enrolment
2016-2017	182
2017-2018	174
2018-2019	165
2019-2020	159
2020-2021	153
2021-2022	149
2022-2023	150
2023-2024	147
2024-2025	143
2025-2026	141

SCHOOL INFORMATION PROFILE

Edgewater Park Public School

Staff

Teaching Staff	Classroom Teacher	8.0	
	Facilitator	0.491	
	Itinerant Teacher	1.701	
	Early Childhood Educator	2.0	
	Section 23	1.0	
			Total: 13.192
Support Staff	Student Support Professional	3.0	
	Information Services Technician	0.5	
	Custodial	1.5	
			Total: 5.0
Administrative Staff	Principal	1.0	
	Vice-Principal	N/A	
	Secretarial	1.0	
			Total: 2.0

Extra-Curricular and Co-Curricular Opportunities for Students

- Lakehead Elementary Athletics
- Creative Movement Jamboree
- Breakfast program
- Neighbourhood Recreation Program (NRP)
- OFIP Tutors and Tutors in the Classroom
- Student Council
- Chess Club
- Knitting Club
- Walking Club
- Role Play
- Circle of Wellness
- Roots of Empathy
- We Stand Up
- Musicians in the Classroom (Thunder Bay Symphony)
- Book Club



SCHOOL INFORMATION PROFILE

Edgewater Park Public School

Facility Profile

Date of Construction

Original Building	1966
Additions	N/A

Size of school site	5 acres / 2 hectares
Building area	26,192 sq.ft. / 2433.3 m ²
Number of Portable Classrooms	0
Number of Classrooms and Specialized Teaching Spaces	<ul style="list-style-type: none"> - 2 FDK Classrooms - 8 Classrooms - Gymnasium - Library - Computer lab - Special Education withdrawal
Playground Area	Approximately 4 acres
Outdoor Features	<ul style="list-style-type: none"> - play structure - soccer field - baseball diamond - basketball court

History of Major Facility Improvements (10-Year)

Year	Item	Cost
2012-2013	FDK renovation	\$72,687
2011-2012	Backflow assessment and renovation	\$11,667
2006-2007	Window replacement	\$145,100

Total Cost: \$229,454

Projected Facility Renewal Needs (5 year)

Element	Brief Description	Priority	Cost
Fire Alarm Systems	Replacement	High	\$81,120
Main Switchboards - Main Circuit Breaker Panel	Replacement	High	\$97,344
Main Switchboards - Main Distribution Panel	Replacement	High	\$97,344
Site Civil Utilities - Underground Utilities - Site	Study	High	\$13,520
Site Civil Utilities - Underground Utilities - Site	Replacement	High	\$354,224

SCHOOL INFORMATION PROFILE

Edgewater Park Public School

Secondary Transformer	Replacement	High	\$13,520
Motor Control Centers	Replacement	High	\$40,560
Terminal & Package Units	Replacement	High	\$417,768
Lighting Equipment - Exterior Lighting - All	Replacement	High	\$31,096
Other Heat Generating Systems - Space Heater	Replacement	High	\$13,520
Other Heat Generating Systems - Electric Heating System	Replacement	High	\$13,520
Air Handling Units - Central Station AHU	Replacement	High	\$97,344
Plumbing Fixtures	Replacement	Medium	\$243,360
Domestic Water Distribution - Domestic Water Heater	Replacement	Medium	\$21,632
Domestic Water Distribution - Plumbing Piping system	Replacement	Medium	\$194,688
Air Distribution, Heating & Cooling - Duct System - Original Building and Addition 1 & 2	Replacement	Medium	\$381,264
Storm water Management - Site	Study	Medium	\$10,816
Branch Wiring - (All)	Replacement	Medium	\$513,760
Storm water Management - Site	Replacement	Medium	\$90,584
Exhaust Systems	Replacement	Medium	\$32,448
Roadways - Asphalt Paved - Site	Replacement	Medium	\$81,120
Ceiling Finishes - Suspended Acoustic Panels - Original Building	Replacement	Medium	\$35,152
Parking Lots - Asphalt Paved - Site	Replacement	Medium	\$108,992
Other Heat Generating Systems	Study	Low	\$9,358
Other Heat Generating Systems	Study	Low	\$4,679

Projected Total Cost: \$2,484,973

Facility Condition Index (FCI): 38.86%

Facility Condition Index is calculated by dividing the estimated cost of repairs over 5 years required in a building by the benchmark cost of a replacement facility.

5yr cost of repairs/replacement facility x 100 = FCI %

Utility Costs 2014-2015			
Total Utility Cost	Utility Cost / Student	Utility Cost / Sq.Ft.	Utility Cost / m ²
\$58,749.50	\$304.40	\$2.24	\$24.14

SCHOOL INFORMATION PROFILE

Edgewater Park Public School

Parking	37 parking spots Parking is adequate for the needs of the school.
Bus Loading Zone	Yes Loading zone is adequate for the needs of the school.
Student Drop-Off Area	Yes Drop-off area is adequate for the needs of the school.

Student Transportation

Proximity of Students to School	Closest: 0.2 km Farthest: 17.8 km Average: 2.5 km		
Number of Students not Eligible for Transportation	91		
Number of Transported Students	110		
<u>Ride Times</u>	<u>Longest</u>	<u>Shortest</u>	<u>Average</u>
To	31 minutes	4 minutes	15 minutes
From	64 minutes	2 minutes	17 minutes

<u>Current Accessibility</u> - Accessible parking	<u>Improvements Required</u> - Automatic door opener - Elevator/Chair lift - Accessible entrance - Accessible Washroom
--	--

SCHOOL INFORMATION PROFILE

Edgewater Park Public School

Other School Use Profile

Child Care

Provider	Details	Revenue (2014-2015)	Full Cost Recovery? Y/N
N/A			

Program-Related Leases/Partnerships

Provider	Details	Revenue (2014-2015)	Full Cost Recovery? Y/N
Section 23 Children's Centre Thunder Bay	Intensive, multi-disciplinary assessment for students experiencing behavioural difficulties in the home and school. Students receive individualized academic programming for numeracy and literacy.	\$5,729.06	N

Commercial Leases

Provider	Details	Revenue (2014-2015)	Full Cost Recovery? Y/N
N/A			

SCHOOL INFORMATION PROFILE

Edgewater Park Public School

Community Use (2014-15)

Details	Permitted Hours (School)	Minimum Permitted Hours (Board - Elementary)	Maximum Permitted Hours (Board - Elementary)	Average Permitted Hours (Board - Elementary)
Sports and recreation, health and wellness, child care programs, arts and cultural, other	16,000.25	10,386.50	36,306.00	20,003.57

**Revenue is generated through Ministry of Education Funding for community use that occurs outside of regular school hours (i.e.-when extra custodial staff is required). System-wide community use is full-cost recovery.*

Suitability for Facility Partnerships:

Space is available for potential facility partnerships.

SCHOOL INFORMATION PROFILE

Edgewater Park Public School

Floor Plan 2015-2016

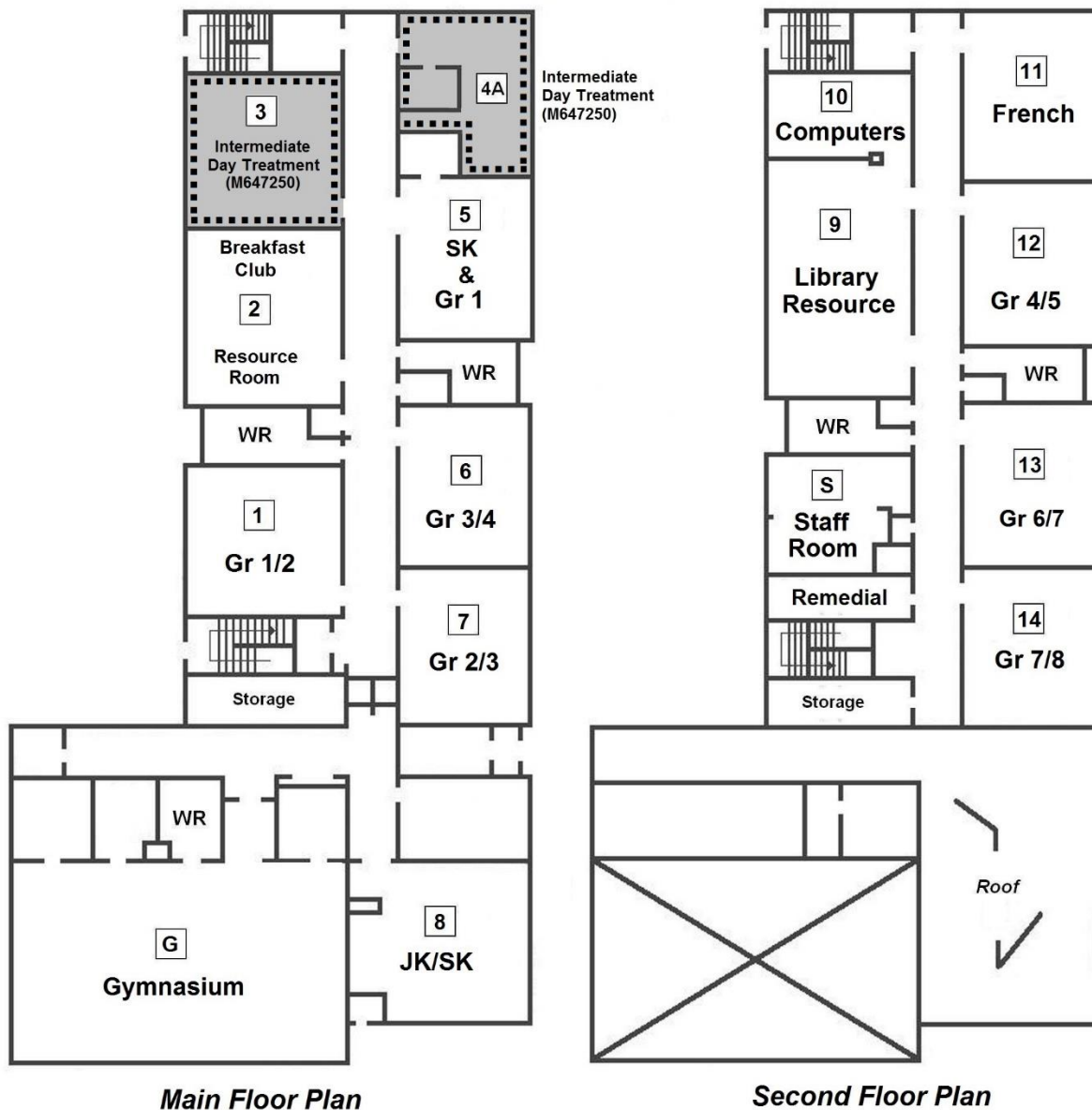
EDGEWATER PARK PUBLIC SCHOOL

(511 W. Victoria Ave; M165808; SFIS 7552)

2015-2016 Room Usage

2015 OTG (On the Ground) Capacity: 248.0

2015 FC (Functional) Capacity: 225.0



Updated: 11 Jan 2016

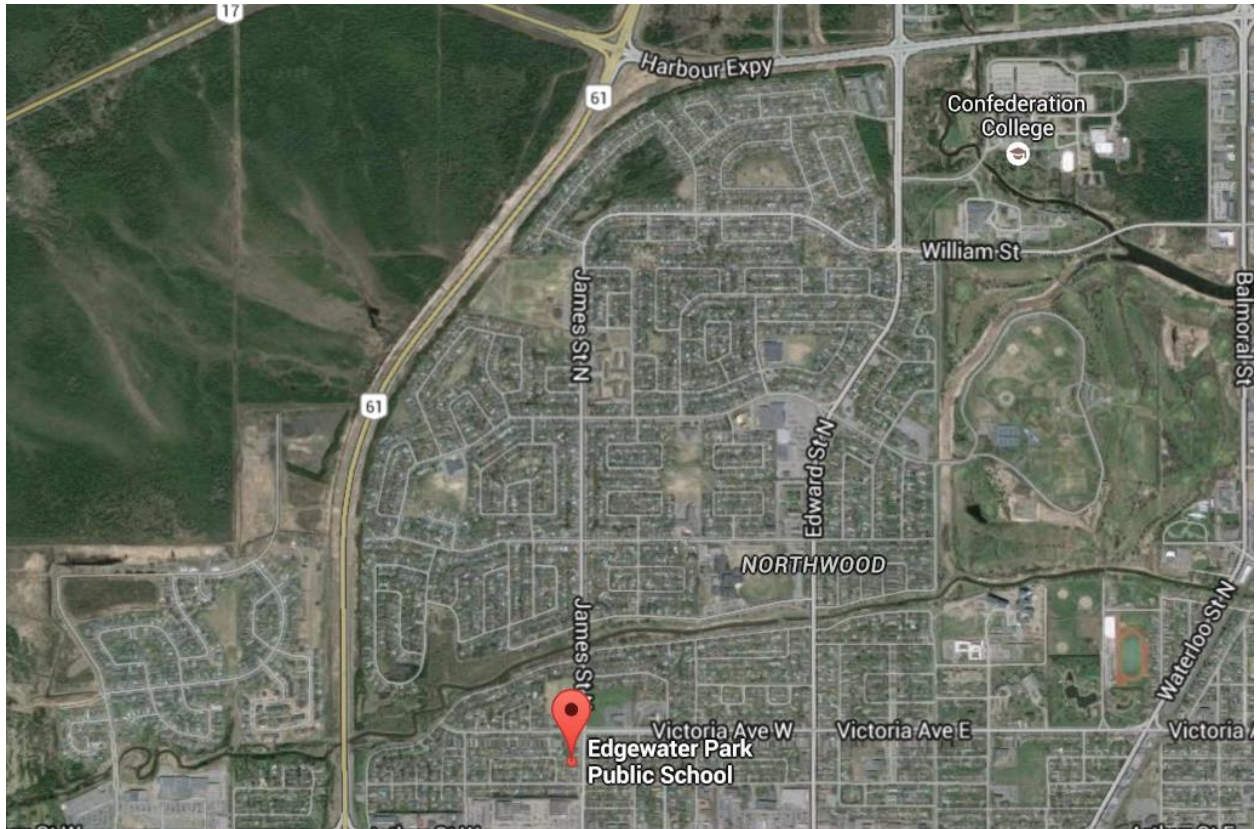
SCHOOL INFORMATION PROFILE
Edgewater Park Public School
Aerial View – School Site



SCHOOL INFORMATION PROFILE

Edgewater Park Public School

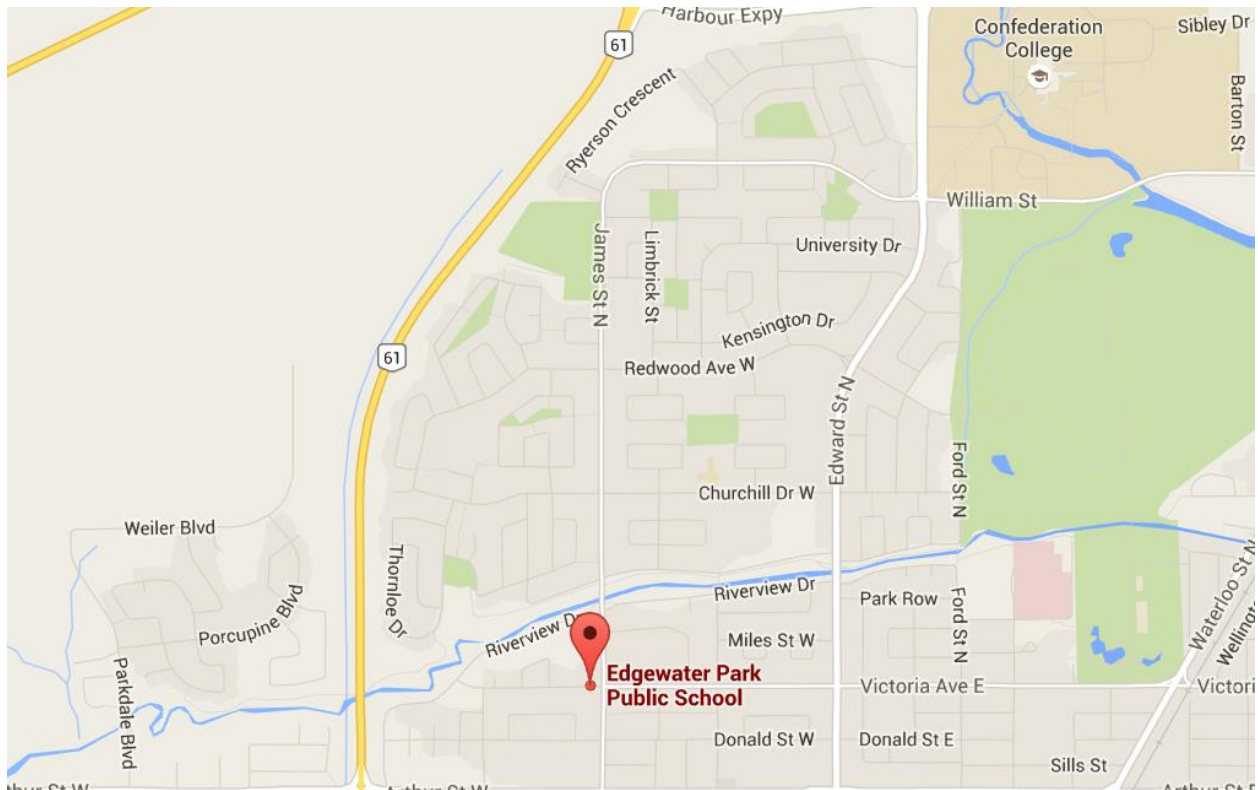
Aerial View – Neighbourhood



SCHOOL INFORMATION PROFILE

Edgewater Park Public School

Road Map



SCHOOL INFORMATION PROFILE
Edgewater Park Public School

School Zone Boundary Map

