



## Hyde Park / Kingsway Park Renewal Plan

# School Information Profile

## Hyde Park

2040 East Walsh Street  
Thunder Bay, ON  
P7E 4W2

February 9, 2016



## **SCHOOL INFORMATION PROFILE**

### **Hyde Park Public School**

#### **Table of Contents**

Purpose.....	3
Instructional Profile.....	4
Facility Profile.....	7
Other School Use Profile.....	10
Appendices:	
A    Floor Plan.....	12
B    Aerial View – School Site.....	13
C    Aerial View – Neighbourhood.....	14
D    Street Map.....	15
E    School Zone Boundary Map.....	16

## **SCHOOL INFORMATION PROFILE**

### **Hyde Park Public School**

#### **Purpose**

The School Information Profiles (SIP) is prepared by board staff as an orientation document to help the Accommodation Review Committee (ARC) and the greater community understand the context surrounding the decision to include a specific school or schools in a pupil accommodation review. The SIP provides an understanding of and familiarity with the facilities under review.

The School Information Profile includes data for each of the following two considerations about the school under review:

- value to the student; and
- value to the school board.

Information is prepared as at October 31, 2015 unless otherwise indicated.



## SCHOOL INFORMATION PROFILE

### Hyde Park Public School

### Instructional Profile

Grade Configuration	FDK-3
Specialized Programs	N/A

Current Grade Organization	<u>Grade</u>	<u>Number of Classes</u>
	JK/SK	2
	SK/1	1
	1	1
	1/2	1
	2/3	1
	3	1
Number of single-grade classes	2	
Number of split-grade classes	5	

#### Enrolment *October 31, 2015*

JK	SK	1	2	3	Total
30	36	44	25	27	162

<b>Number of out-of-boundary students</b> <i>*For schools with French Immersion, JK students are not included.</i> <i>**Students attending system programs are not considered out-of-zone (special needs, IB, etc.)</i> <i>***Intermediate students from an FDK-6 school moving to the FDK-8 school that they are zoned for are not included.</i> <i>****For the Churchill 7-8 program, students on the North side are considered out of zone.</i>	27
<b>Voluntary Aboriginal Self Identification (number of students)</b>	44 (27.2%)
<b>Percentage of students accessing special education services</b> <i>Source: Ministry of Education Elementary School Profile, January 2016</i> <i>*The percentage of the student population who are in special education programs or receive special education services. This includes students with identified and non-identified exceptionalities, but excludes students identified as gifted (Provincial average is 14.9%)</i>	10.5%

## SCHOOL INFORMATION PROFILE

### Hyde Park Public School

School capacity	237
Utilization	68.4%
<p><i>*School capacity and utilization are both “on-the-ground” (OTG) values.</i></p> <p><i>**The Ministry of Education calculates on-the-ground school capacity by assigning a loading to each category of instructional space identified (e.g. classroom, science lab), based on the number of pupils that can reasonably be accommodated in each category of instructional space. The sum of all the loading in the instructional space within a facility is its capacity.</i></p> <p><i>***Utilization is calculated by dividing the enrolment of the school by its capacity.</i></p>	

#### Enrolment History

Year	Enrolment
2010-2011	182
2011-2012	168
2012-2013	162
2013-2014	162
2014-2015	155
2015-2016	162

#### Enrolment Projections

Year	Enrolment
2016-2017	163
2017-2018	167
2018-2019	156
2019-2020	153
2020-2021	152
2021-2022	151
2022-2023	150
2023-2024	149
2024-2025	149
2025-2026	148

## SCHOOL INFORMATION PROFILE

### Hyde Park Public School

#### Staff

Teaching Staff	Classroom Teacher	7.0	Total: 12.86
	Facilitator	0.5	
	Itinerant Teacher	1.36	
	Early Childhood Educator	4.0	
Support Staff	Student Support Professional	4.0	Total: 7.25
	Information Services Technician	0.5	
	Custodial	2.75	
Administrative Staff	Principal	1.0 (shared with Kingsway Park)	Total: 3.0
	Vice-Principal	1.0	
	Secretarial	1.0	

#### Extra-Curricular and Co-Curricular Opportunities for Students

- Creative Movement Jamboree
- Red Cross breakfast program
- Harbour Youth Services (Boys and Girls Club)
- OFIP Tutors and Tutors in the Classroom
- Concerts and musicals
- Pow Wow Events
- Lego club
- Roots of Empathy
- Thunder Bay Symphony



## SCHOOL INFORMATION PROFILE

### Hyde Park Public School

### Facility Profile

#### Date of Construction

Original Building	1955
Additions	2012

Size of school site	2 acres / 0.8 hectares
Building area	22,223 sq.ft. / 2064.6 m <sup>2</sup>
Number of Portable Classrooms	0
Number of Classrooms and Specialized Teaching Spaces	<ul style="list-style-type: none"> <li>- 3 FDK Classrooms</li> <li>- 6 Classrooms</li> <li>- Gymnasium</li> <li>- Library</li> <li>- Special Education withdrawal</li> </ul>
Playground Area	Approximately 1 acre
Outdoor Features	- raised garden beds with benches

#### History of Major Facility Improvements (10-Year)

Year	Item	Cost
2011-2012	FDK addition and renovation	\$1,366,478
2010-2011	Backflow assessment and renovation	\$11,667
2008-2009	Entrance accessibility	\$9,356
2007-2008	Parking lot and bus drop-off paving	\$68,365

Total Cost: \$1,455,866

#### Projected Facility Renewal Needs (5 year)

Element	Brief Description	Priority	Cost
Main Switchboards - Main Disconnect & Main Distribution Panel- Original Building	Replacement	High	\$97,344
Hot Water Boilers - Entire Building	Replacement	High	\$148,720
Compressed Air Systems - Entire Building	Replacement	High	\$21,632
Underground Utilities	Replacement	High	\$256,880
Motor Control Centers	Replacement	High	\$40,560
Auxiliary Equipment - HVAC Pumps	Replacement	High	\$6,760
Auxiliary Equipment - Stack & Breaching	Replacement	High	\$10,816
Lighting Equipment - Exit Lighting - Entire Building	Replacement	High	\$27,040
Signage	Replacement	High	\$9,464
Plumbing Fixtures - Entire Building	Replacement	Medium	\$81,120
Domestic Water Distribution - Domestic Water Heater - Original Building & Addition 1	Replacement	Medium	\$32,448

## SCHOOL INFORMATION PROFILE

### Hyde Park Public School

Domestic Water Distribution - Plumbing Pumps - Original Building	Replacement	Medium	\$33,800
Air Distribution, Heating & Cooling - Duct System - Entire Building	Replacement	Medium	\$310,960
Air Distribution, Heating & Cooling - Duct System - Entire Building	Study	Medium	\$13,520
Floor Finishes - Vinyl Floor Tiles - Original Building - 20%	Replacement	Medium	\$29,744
Security Systems - Entire Building	Replacement	Medium	\$27,040
Landscaping	Replacement	Medium	\$16,224
Information Technology System	Replacement	Low	\$52,000
Wall Finishes - Paint Wall Covering - Original Building	Replacement	Low	\$88,400
Wall Finishes - Ceramic Wall Tiles - Original Building	Replacement	Low	\$10,400

Projected Total Cost: \$1,314,872

#### Facility Condition Index (FCI): 40.16%

*Facility Condition Index is calculated by dividing the estimated cost of repairs over 5 years required in a building by the benchmark cost of a replacement facility.*

*5yr cost of repairs/replacement facility x 100 = FCI %*

Utility Costs 2014-2015			
Total Utility Cost	Utility Cost / Student	Utility Cost / Sq.Ft.	Utility Cost / m <sup>2</sup>
\$31,364.32	\$193.61	\$1.41	\$15.19

Parking	20 parking spots Parking is not adequate for the needs of the school and daycare.
Bus Loading Zone	Yes Bus loading zone require improvements.
Student Drop-Off Area	No

#### Student Transportation

Proximity of Students to School	Closest: 0.03 km Farthest: 1.6 km Average: km
Number of Students not Eligible for Transportation	62
Number of Transported Students	105



## SCHOOL INFORMATION PROFILE

### Hyde Park Public School

<u>Ride Times</u>	<u>Longest</u>	<u>Shortest</u>	<u>Average</u>
To	26 minutes	2 minutes	12 minutes
From	24 minutes	1 minute	12 minutes

<u>Current Accessibility</u> - Accessible parking - Automatic door opener - Accessible entrance	<u>Improvements Required</u> - Elevator/Chair lift - Accessible Washroom
--	--

## SCHOOL INFORMATION PROFILE

### Hyde Park Public School

#### Other School Use Profile

##### Child Care

Provider	Details	Revenue (2014-2015)	Full Cost Recovery? Y/N
Little Lions Waldorf Child Care	Full day - Infant - Toddler - Pre-school Before and After School Care - JK/SK - School Age	\$6,396.19	N

##### Program-Related Leases/Partnerships

Provider	Details	Revenue (2014-2015)	Full Cost Recovery? Y/N
N/A			

##### Commercial Leases

Provider	Details	Revenue (2014-2015)	Full Cost Recovery? Y/N
N/A			

## SCHOOL INFORMATION PROFILE

### Hyde Park Public School

#### Community Use (2014-15)

Details	Permitted Hours (School)	Minimum Permitted Hours (Board - Elementary)	Maximum Permitted Hours (Board - Elementary)	Average Permitted Hours (Board - Elementary)
Child care programs, other	18,896.50	10,386.50	36,306.00	20,003.57

*\*Revenue is generated through Ministry of Education Funding for community use that occurs outside of regular school hours (i.e.-when extra custodial staff is required). System-wide community use is full-cost recovery.*

#### Suitability for Facility Partnerships:

Space is available for potential facility partnerships.

## SCHOOL INFORMATION PROFILE

### Hyde Park Public School

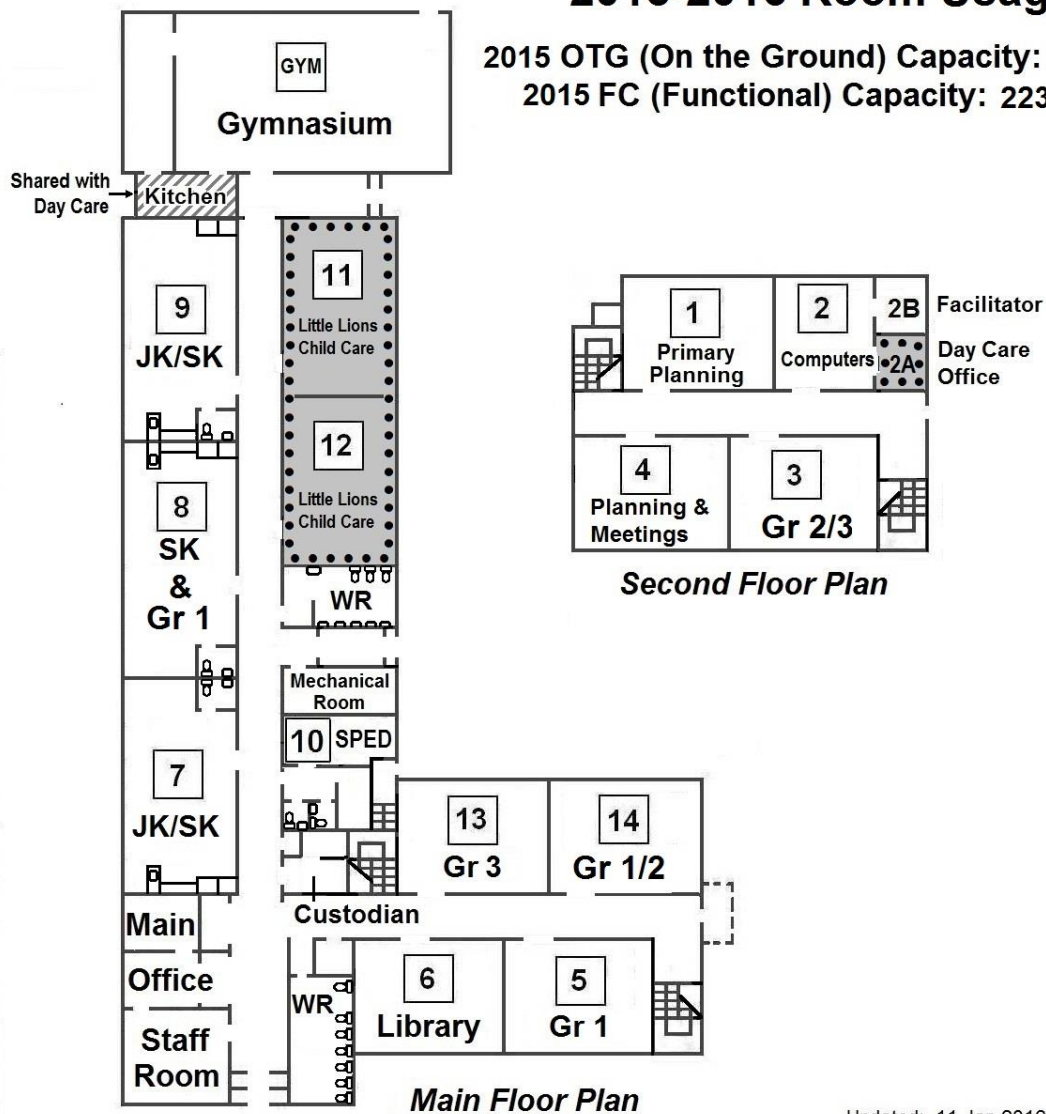
#### Floor Plan 2015-2016

### HYDE PARK PUBLIC SCHOOL

(2040 E. Walsh Street; M274895; SFIS 7560)

#### 2015-2016 Room Usage

2015 OTG (On the Ground) Capacity: 237.0  
2015 FC (Functional) Capacity: 223.0

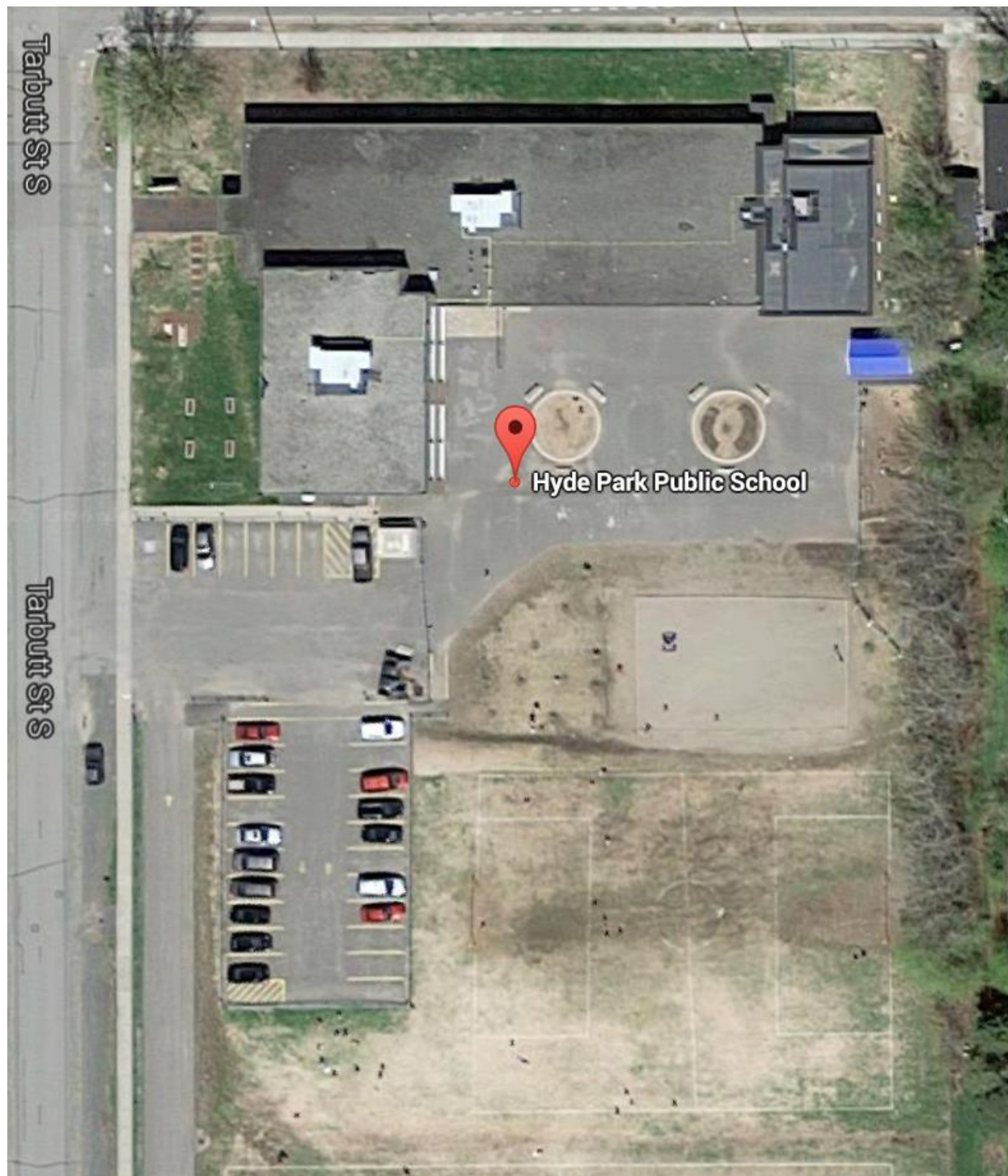


Updated: 11 Jan 2016

## SCHOOL INFORMATION PROFILE

### Hyde Park Public School

#### Aerial View – School Site

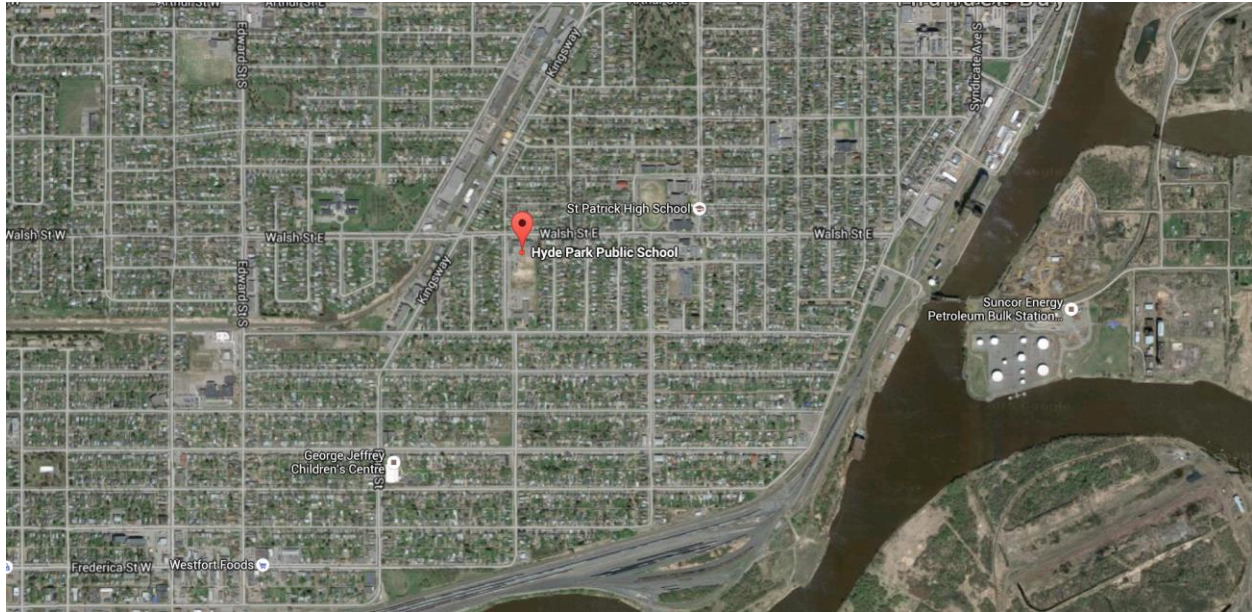




## SCHOOL INFORMATION PROFILE

### Hyde Park Public School

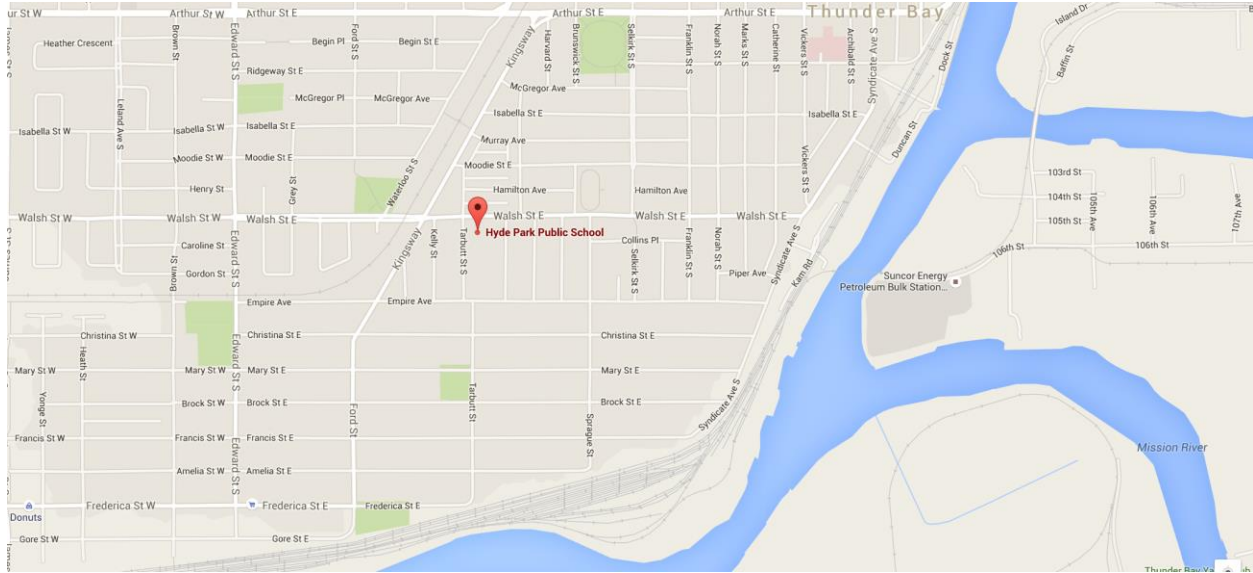
#### Aerial View – Neighbourhood



## SCHOOL INFORMATION PROFILE

### Hyde Park Public School

#### Street Map



**SCHOOL INFORMATION PROFILE**  
**Hyde Park Public School**

**School Zone Boundary Map**

