



Hyde Park / Kingsway Park Renewal Plan

School Information Profile

Kingsway Park

315 Empire Avenue
Thunder Bay, ON
P7E 4R9

February 9, 2016



SCHOOL INFORMATION PROFILE

Kingsway Park Public School

Table of Contents

Purpose.....	3
Instructional Profile.....	4
Facility Profile.....	7
Other School Use Profile.....	10
Appendices:	
A Floor Plan.....	11
B Aerial View – School Site.....	12
C Aerial View – Neighbourhood.....	13
D Street Map.....	14
E School Zone Boundary Map.....	15

SCHOOL INFORMATION PROFILE

Kingsway Park Public School

Purpose

The School Information Profiles (SIP) is prepared by board staff as an orientation document to help the Accommodation Review Committee (ARC) and the greater community understand the context surrounding the decision to include a specific school or schools in a pupil accommodation review. The SIP provides an understanding of and familiarity with the facilities under review.

The School Information Profile includes data for each of the following two considerations about the school under review:

- value to the student; and
- value to the school board.

Information is prepared as at October 31, 2015 unless otherwise indicated.



SCHOOL INFORMATION PROFILE

Kingsway Park Public School

Instructional Profile

Grade Configuration	4-8
Specialized Programs	N/A

Current Grade Organization	<u>Grade</u>	<u>Number of Classes</u>
	4	1
	4/5	1
	5/6	1
	6	1
	7	1
	7/8	1
	8	1
Number of single-grade classes	4	
Number of split-grade classes	3	

Enrolment *October 31, 2015*

Grade	4	5	6	7	8	Total
Students	31	36	38	35	38	178

Number of out-of-boundary students <i>*For schools with French Immersion, JK students are not included.</i> <i>**Students attending system programs are not considered out-of-zone (special needs, IB, etc.)</i> <i>***Intermediate students from an FDK-6 school moving to the FDK-8 school that they are zoned for are not included.</i> <i>****For the Churchill 7-8 program, students on the North side are considered out of zone.</i>	49
Voluntary Aboriginal Self Identification (number of students)	38 (21.3%)
Percentage of students accessing special education services <i>Source: Ministry of Education Elementary School Profile, January 2016</i> <i>*The percentage of the student population who are in special education programs or receive special education services. This includes students with identified and non-identified exceptionalities, but excludes students identified as gifted (Provincial average is 14.9%)</i>	23.4%

School capacity	262
Utilization	67.9%
<i>*School capacity and utilization are both "on-the-ground" (OTG) values.</i> <i>**The Ministry of Education calculates on-the-ground school capacity by assigning a loading to each category of instructional space identified (e.g. classroom, science lab), based on the number of pupils that can reasonably be accommodated in each category of instructional space. The sum of all the loading in the instructional space within a facility is its capacity.</i> <i>***Utilization is calculated by dividing the enrolment of the school by its capacity.</i>	

SCHOOL INFORMATION PROFILE

Kingsway Park Public School

Enrolment History

Year	Enrolment
2010-2011	214
2011-2012	206
2012-2013	192
2013-2014	184
2014-2015	185
2015-2016	178

Enrolment Projections

Year	Enrolment
2016-2017	168
2017-2018	158
2018-2019	160
2019-2020	158
2020-2021	154
2021-2022	157
2022-2023	163
2023-2024	153
2024-2025	149
2025-2026	148

Staff

Teaching Staff	Classroom Teacher Facilitator Itinerant Teacher Early Childhood Educator	7.0 0.5 1.36 N/A Total: 8.86
Support Staff	Student Support Professional Information Services Technician Custodial	5.0 0.5 1.5 Total: 7.0
Administrative Staff	Principal Vice-Principal Secretarial	1.0 N/A 1.0 Total: 2.0

SCHOOL INFORMATION PROFILE

Kingsway Park Public School

Extra-Curricular and Co-Curricular Opportunities for Students

- Lakehead Elementary Athletics
- Creative Movement Jamboree
- Breakfast program
- Grub Tub lunch program and healthy snacks
- Harbour Youth Services after school program
- OFIP tutors and Tutors in the Classroom
- Concerts and musicals
- Drumming groups with Indian Friendship center and local elder (twice a month)
- Student council
- Singing club
- Lego Club
- Intramurals
- Craft Club
- Environmental club
- Gardening club (Truth and Reconciliation garden)
- Circle of Wellness
- We Stand Up
- Lakehead music festival (singing club and band)
- Regular guest cultural speakers
- Elders in the Classroom
- Two Pow-wows per year
- Science week (focus on science with guest lectures and visitors.)
- Earth day events- Eco- Bus and guest speakers
- Winter electives- Intro to adventure activities- Rock climbing(rock wall) Alpine Skiing/snowboarding snowshoeing/ dog sledding
- Students participating in SPEAK UP



SCHOOL INFORMATION PROFILE

Kingsway Park Public School

Facility Profile

Date of Construction

Original Building	1948
Additions	1949, 1952

Size of school site	4.7 acres / 1.9 hectares
Building area	25,392 sq.ft. / 2359.0 m ²
Number of Portable Classrooms	0
Number of Classrooms and Specialized Teaching Spaces	<ul style="list-style-type: none"> - 11 Classrooms - Gymnasium - Library - Science Lab - Special Education withdrawal
Playground Area	Approximately 3.5 acres
Outdoor Features	<ul style="list-style-type: none"> - basketball courts - soccer field

History of Major Facility Improvements (10-Year)

Year	Item	Cost
2013-2014	New public address system	\$11,204
	Ground and drainage improvements	\$139,550
2012-2013	Heating and ventilation upgrades	\$300,000
2011-2012	New lighting	\$150,000
2010-2011	Backflow assessment and renovations	\$11,667
2007-2008	Parking lot and bus drop-off paving	\$74,875
2006-2007	Door lever conversion for accessibility	\$5,000

Total Cost: \$692,296

Projected Facility Renewal Needs (5 year)

Element	Brief Description	Priority	Cost
Standpipe Systems	Replacement	High	\$40,560
Fire Alarm Systems	Replacement	High	\$135,200
Hot Water Boilers	Replacement	High	\$101,400
Site Civil/Mechanical Utilities - Underground Utilities - Site	Study	High	\$13,520
Site Civil/Mechanical Utilities - Underground Utilities - Site	Replacement	High	\$343,408
Motor Control Centers	Replacement	High	\$40,560

SCHOOL INFORMATION PROFILE

Kingsway Park Public School

Exterior Windows - Original Building and Additions 1 & 2	Replacement	High	\$178,464
Auxiliary Equipment - Stack & Breaching	Replacement	High	\$13,520
Lighting Equipment - Exterior Lighting	Replacement	High	\$40,560
Lighting Equipment - Emergency Lighting	Replacement	High	\$43,264
Domestic Water Distribution - Domestic Water Heater	Replacement	Medium	\$13,520
Floor Finishes - Vinyl Tile Flooring - Original Building and Additions 1 & 2	Replacement	Medium	\$40,560
Floor Finishes - Hardwood - Gymnasium and Stage	Replacement	Medium	\$81,120
Floor Finishes - Terrazzo - Corridors and Washrooms	Major Repair	Medium	\$54,080
Stormwater Management - Site	Major Repair	Medium	\$90,584
Fittings - Millwork - Original Building and Additions 1 & 2	Replacement	Medium	\$114,920
Fittings - Lockers - Original Building and Additions 1 & 2	Replacement	Medium	\$16,224
Roadways - Asphalt Paved - Site	Replacement	Medium	\$37,856
Lighting Equipment - Exit Lighting	Replacement	Medium	\$27,040
Exterior Windows - (All)	Maintain	Medium	\$29,770
Exterior Windows - (All)	Maintain	Medium	\$596
Exterior Windows - (All)	Replacement	Medium	\$44,656
Standard Foundations	Study	Low	\$7,443
Standard Foundations	Replacement	Low	\$111,638
Fittings - (All)	Upgrade	Low	\$24,561
Parking Lots	Replacement	Low	\$29,770
Playing Fields - (All)	Upgrade	Low	\$745
Wall Finishes - (All)	Replacement	Low	\$2,978
Playing Fields	Replacement	Low	\$22,328
Partitions - Intake Renovations	Study	Low	\$12,780
Partitions - Intake Renovations	Major Repair	Low	\$373,117
Partitions - Intake Renovations	Major Repair	Low	\$12,578
Playing Fields	Major Repair	Low	\$40,666

Projected Total Cost: \$2,139,983

SCHOOL INFORMATION PROFILE

Kingsway Park Public School

Facility Condition Index (FCI): 50.65%

Facility Condition Index is calculated by dividing the estimated cost of repairs over 5 years required in a building by the benchmark cost of a replacement facility.

5yr cost of repairs/replacement facility x 100 = FCI %

Utility Costs 2014-2015			
Total Utility Cost	Utility Cost / Student	Utility Cost / Sq.Ft.	Utility Cost / m ²
\$23,906.41	\$134.31	\$0.94	\$10.13

Parking	25 parking spots Parking is adequate for the needs of the school.
Bus Loading Zone	Yes Bus loading zone requires improvements.
Student Drop-Off Area	Yes The drop-off area is adequate for the needs of the school.

Student Transportation

Proximity of Students to School	Closest: 0.3 km Farthest: 36.6 km Average: 2.2 km		
Number of Students not Eligible for Transportation	139		
Number of Transported Students	99		
<u>Ride Times</u>	<u>Longest</u>	<u>Shortest</u>	<u>Average</u>
To	27 minutes	5 minutes	15 minutes
From	24 minutes	1 minute	12 minutes

<u>Current Accessibility</u> - Accessible parking - Accessible entrance	<u>Improvements Required</u> - Accessible Washroom - Automatic door opener - Elevator/chair lift
---	---

SCHOOL INFORMATION PROFILE

Kingsway Park Public School

Other School Use Profile

Child Care

Provider	Details	Revenue (2014-2015)	Full Cost Recovery? Y/N
N/A			

Program-Related Leases/Partnerships

Provider	Details	Revenue (2014-2015)	Full Cost Recovery? Y/N
Professional Program Onsite Delivery (PPOD) Lakehead University – Teacher Candidate Training	Education students provide tutoring for Kingsway students as part of their professional program.	\$0.00	N

Commercial Leases

Provider	Details	Revenue (2014-2015)	Full Cost Recovery? Y/N
N/A			

Community Use (2014-15)

Details	Permitted Hours (School)	Minimum Permitted Hours (Board - Elementary)	Maximum Permitted Hours (Board - Elementary)	Average Permitted Hours (Board - Elementary)
Educational, parenting support, sports and recreation, health and wellness, leadership, support for low-income communities, other	18,237.0	10,386.50	36,306.00	20,003.57

**Revenue is generated through Ministry of Education Funding for community use that occurs outside of regular school hours (i.e.-when extra custodial staff is required). System-wide community use is full-cost recovery.*

Suitability for Facility Partnerships:

Space is available for potential facility partnerships.

SCHOOL INFORMATION PROFILE

Kingsway Park Public School

Floor Plan 2015-2016

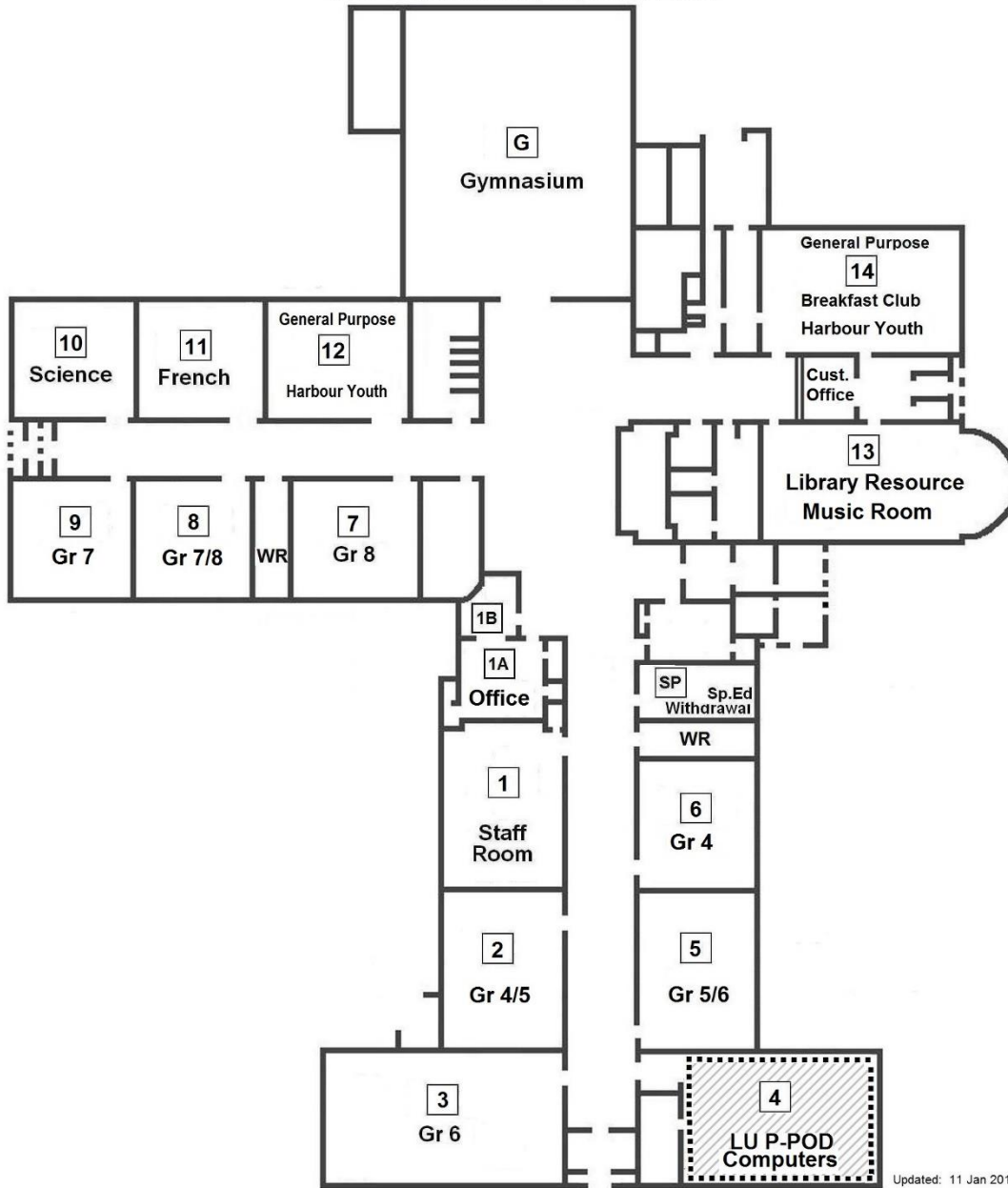
KINGSWAY PARK PUBLIC SCHOOL

(315 Empire Avenue; M300632; SFIS 7563)

2015-2016 Room Usage

2015 OTG (On the Ground) Capacity: 262.0

2015 FC (Functional) Capacity: 216.0



Updated: 11 Jan 2016

SCHOOL INFORMATION PROFILE
Kingsway Park Public School

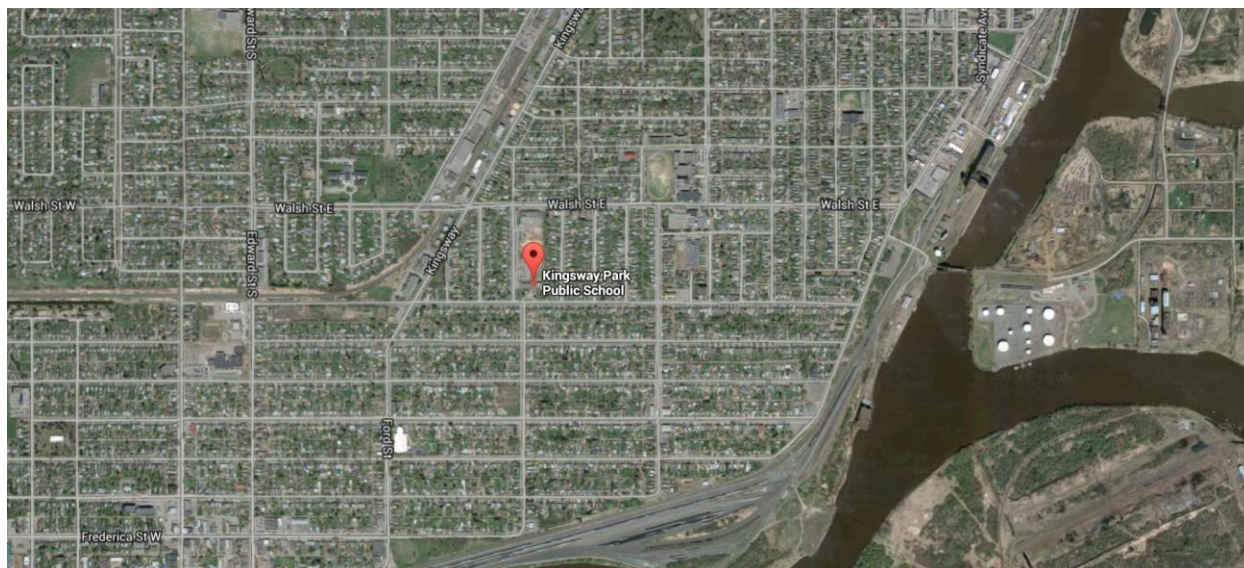
Aerial View – School Site



SCHOOL INFORMATION PROFILE

Kingsway Park Public School

Aerial View – Neighbourhood



SCHOOL INFORMATION PROFILE

Kingsway Park Public School

Street Map



SCHOOL INFORMATION PROFILE
Kingsway Park Public School

School Zone Boundary Map

