



2015-16
Accommodation Review

School Information Profile

St. James

243 St. James Street
Thunder Bay, ON
P7A 3P1

April 6, 2016



SCHOOL INFORMATION PROFILE

St. James Public School

Table of Contents

Purpose.....	3
Instructional Profile.....	4
Facility Profile.....	7
Other School Use Profile.....	10
Appendices:	
A Floor Plan.....	12
B Aerial View – School Site.....	13
C Aerial View – Neighbourhood.....	14
D Street Map.....	15
E School Zone Boundary Map.....	16

SCHOOL INFORMATION PROFILE

St. James Public School

Purpose

The School Information Profiles (SIP) is prepared by board staff as an orientation document to help the Accommodation Review Committee (ARC) and the greater community understand the context surrounding the decision to include a specific school or schools in a pupil accommodation review. The SIP provides an understanding of and familiarity with the facilities under review.

The School Information Profile includes data for each of the following two considerations about the school under review:

- value to the student; and
- value to the school board.

Information is prepared as at October 31, 2015 unless otherwise indicated.



SCHOOL INFORMATION PROFILE

St. James Public School

Instructional Profile

Grade Configuration	FDK-6
Specialized Programs	Section 23

Current Grade Organization	<u>Grade</u>	<u>Number of Classes</u>
	JK/SK	2
	1/2	1
	2/3	1
	3/4	1
	4/5	1
	6	1
Number of single-grade classes	1	
Number of split-grade classes	6	

Enrolment *October 31, 2015*

JK	SK	1	2	3	4	5	6	Total
21	24	17	20	13	21	16	24	156

Number of out-of-boundary students <i>*For schools with French Immersion, JK students are not included.</i> <i>**Students attending system programs are not considered out-of-zone (special needs, IB, etc.)</i> <i>***Intermediate students from an FDK-6 school moving to the FDK-8 school that they are zoned for are not included.</i> <i>****For the Churchill 7-8 program, students on the North side are considered out of zone.</i>	18
Percentage of students accessing special education services <i>Source: Ministry of Education Elementary School Profile, January 2016</i> <i>*The percentage of the student population who are in special education programs or receive special education services. This includes students with identified and non-identified exceptionalities, but excludes students identified as gifted (Provincial average is 14.9%)</i>	15.6%

SCHOOL INFORMATION PROFILE

St. James Public School

School capacity	245
Utilization	63.7%
<p><i>*School capacity and utilization are both “on-the-ground” (OTG) values.</i></p> <p><i>**The Ministry of Education calculates on-the-ground school capacity by assigning a loading to each category of instructional space identified (e.g. classroom, science lab), based on the number of pupils that can reasonably be accommodated in each category of instructional space. The sum of all the loading in the instructional space within a facility is its capacity.</i></p> <p><i>***Utilization is calculated by dividing the enrolment of the school by its capacity.</i></p>	

Enrolment History

Year	Enrolment
2010-2011	171
2011-2012	169
2012-2013	173
2013-2014	152
2014-2015	166
2015-2016	156

Enrolment Projections

Year	Enrolment
2016-2017	147
2017-2018	148
2018-2019	144
2019-2020	147
2020-2021	147
2021-2022	149
2022-2023	145
2023-2024	144
2024-2025	141
2025-2026	137

SCHOOL INFORMATION PROFILE

St. James Public School

Staff

February 1, 2016

Teaching Staff	Classroom Teacher	7.0	
	Facilitator	0.5	
	Itinerant Teacher	1.494	
	Section 23	1.0	
	Early Childhood Educator	2.0	
			Total: 11.994
Support Staff	Student Support Professional	6.0	
	Information Services Technician	0.5	
	Custodial	2.75	
			Total: 9.25
Administrative Staff	Principal	1.0	
	Vice-Principal	N/A	
	Secretarial	1.0	
			Total: 2.0

Extra-Curricular and Co-Curricular Opportunities for Students

- Lakehead Elementary Athletics
- Creative Movement Jamboree
- Breakfast program
- Lunch program
- Biwasse'aa after-school program
- OFIP tutors and Tutors in the Classroom
- Concerts and musicals?
- Student ambassadors
- School spirit ambassadors
- Healthy Schools Club
- Primary sports skills once a week
- Junior sports skills once a week
- Circle of Wellness
- Roots of Empathy
- Thunder Bay Symphony



SCHOOL INFORMATION PROFILE

St. James Public School

Facility Profile

Date of Construction

Original Building	1907
Additions	1914, 1971

Size of school site	2 acres / 0.8 hectares
Building area	38,093 sq.ft. / 4042 m ²
Number of Portable Classrooms	0
Number of Classrooms and Specialized Teaching Spaces	<ul style="list-style-type: none"> - 2 FDK Classrooms - 7 Classrooms - Gymnasium - Library - Computer lab - Special education withdrawal
Playground Area	Approximately 1.5 acres
Outdoor Features	<ul style="list-style-type: none"> - basketball court - play structure - gazebo

History of Major Facility Improvements (10-Year)

Year	Item	Cost
2013-2014	Replacement shingled roof	\$125,000
2012-2013	Backflow assessment and renovations New flooring in 2 nd floor hallway and classrooms	\$10,000 \$80,000
2009-2010	Exterior façade improvements	\$37,500
2008-2009	Site paving	\$38,274

Total Cost: \$290,774

Projected Facility Renewal Needs (5 year)

Element	Brief Description	Priority	Cost
Interior Stair Construction - Original Building & Additions 1 and 2	Upgrade	High	\$13,520
Main Switchboards - Secondary Switchgear	Replacement	High	\$202,800
Heating/Chilling water distribution systems	Study	High	\$10,816
Heating/Chilling water distribution systems	Replacement	High	\$811,200
Site Civil/Mechanical Utilities - Site	Study	High	\$10,816

SCHOOL INFORMATION PROFILE

St. James Public School

Site Civil/Mechanical Utilities - Site	Replacement	High	\$237,640
Roof Coverings - Modified Bitumen - Additions 1 and 2	Replacement	High	\$164,944
Roof Coverings - Asphalt Shingles - Original Building	Replacement	High	\$62,192
Elevators & Lifts - Accessible Chair Lift	Replacement	High	\$40,560
Auxiliary Equipment - Condensate Tank	Replacement	High	\$13,520
Lighting Equipment - Exit Signs	Replacement	High	\$27,040
Other Heat Generating Systems - Electric Heating System	Replacement	High	\$13,520
Air Handling Units	Replacement	High	\$78,416
Domestic Water Distribution - Plumbing Piping Systems	Replacement	Medium	\$283,920
Floor Finishes - Painted Concrete Floor - Original Building	Replacement	Medium	\$13,520
Pedestrian Paving - Concrete Stone - Site	Major Repair	Medium	\$18,928
Ceiling Finishes - Suspended Acoustic Panel Ceiling	Replacement	Medium	\$58,136
Wall Finishes - Acoustic Panel Wall Finish - Gymnasium	Replacement	Medium	\$22,984
Site Development - Signage - Site	Replacement	Medium	\$13,520
Roof Coverings - (Main Building)	Upgrade	Medium	\$0
Exterior Walls - (Main Building)	Upgrade	Medium	\$7,443
Exterior Windows - (Addition #1)	Component Replacement/Reconstruction	Medium	\$14,884

Projected Total Cost: \$2,120,320

Facility Condition Index (FCI): 60.65%

Facility Condition Index is calculated by dividing the estimated cost of repairs over 5 years required in a building by the benchmark cost of a replacement facility.

5yr cost of repairs/replacement facility x 100 = FCI %

Utility Costs 2014-2015			
Total Utility Cost	Utility Cost / Student	Utility Cost / Sq.Ft.	Utility Cost / m ²
\$45,775.79	\$293.43	\$1.20	\$11.33

Parking	35 spaces
---------	-----------

SCHOOL INFORMATION PROFILE

St. James Public School

	Parking is not adequate for the needs of the school and daycare.
Bus Loading Zone	Yes Loading zone is adequate for the needs of the school.
Student Drop-Off Area	No

Student Transportation

Proximity of Students to School	Closest: 0.2 km Farthest: 12.8 km Average: 2.0 km		
Number of Students not Eligible for Transportation	51		
Number of Transported Students	116		
<u>Ride Times</u>	<u>Longest</u>	<u>Shortest</u>	<u>Average</u>
To	33 minutes	4 minutes	16 minutes
From	24 minutes	1 minute	10 minutes

<u>Current Accessibility</u> - Accessible parking	<u>Improvements Required</u> - Elevator/chair lift - Accessible Washroom - Automatic door opener - Accessible entrance
--	--

SCHOOL INFORMATION PROFILE
St. James Public School
Other School Use Profile

Child Care

Provider	Details	Revenue (2014-2015)	Full Cost Recovery? Y/N
Schoolhouse Playcare Centre	<ul style="list-style-type: none"> - Full Day - Infant - Toddler - Preschool - Before and After School - JK/SK - School Age 	\$23,759.50	Y

Program-Related Leases/Partnerships

Provider	Details	Revenue (2014-2015)	Full Cost Recovery? Y/N
Biwaase'aa Shkoday Abinojiiwak Obimiwedoan	Serves the needs of urban Aboriginal children and families. Includes in-school, after-school, and nutrition programs.	N/A	N
Section 23 Children's Centre Thunder Bay	Intensive, multi-disciplinary assessment for students experiencing behavioural difficulties in the home and school. Students receive individualized academic programming for numeracy and literacy.	\$5,729.06	N

Commercial Leases

Provider	Details	Revenue (2014-2015)	Full Cost Recovery? Y/N
N/A			

SCHOOL INFORMATION PROFILE

St. James Public School

Community Use (2014-15)

Details	Permitted Hours (School)	Minimum Permitted Hours (Board - Elementary)	Maximum Permitted Hours (Board - Elementary)	Average Permitted Hours (Board - Elementary)
Educational, sports and recreation, health and wellness, child care programs, social, meetings, aboriginal-focused programs, supports for low-income communities, other	20,991.50	10,386.50	36,306.00	20,003.57

**Revenue is generated through Ministry of Education Funding for community use that occurs outside of regular school hours (i.e.-when extra custodial staff is required). System-wide community use is full-cost recovery.*

Suitability for Facility Partnerships:

Space is available for potential facility partnerships.

Floor Plan 2015-2016

SCHOOL INFORMATION PROFILE

St. James Public School

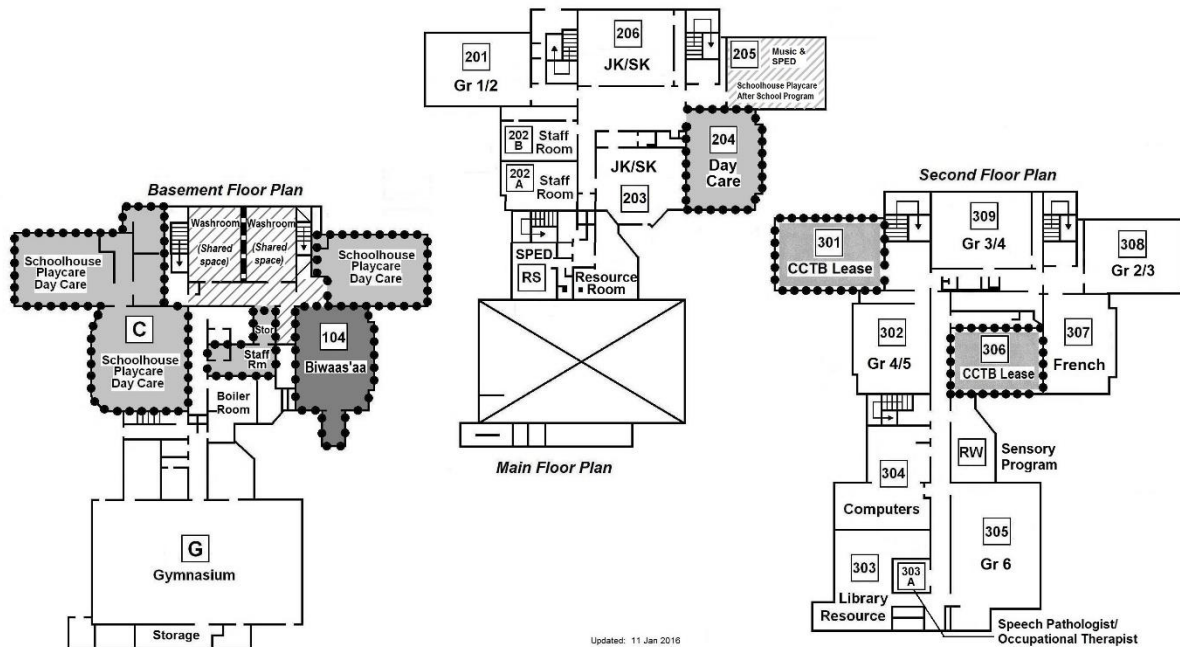
ST. JAMES PUBLIC SCHOOL

(243 St. James Street; M530344; SFIS 7568)

2015-2016 Room Usage

2015 OTG (On the Ground) Capacity: 245.0

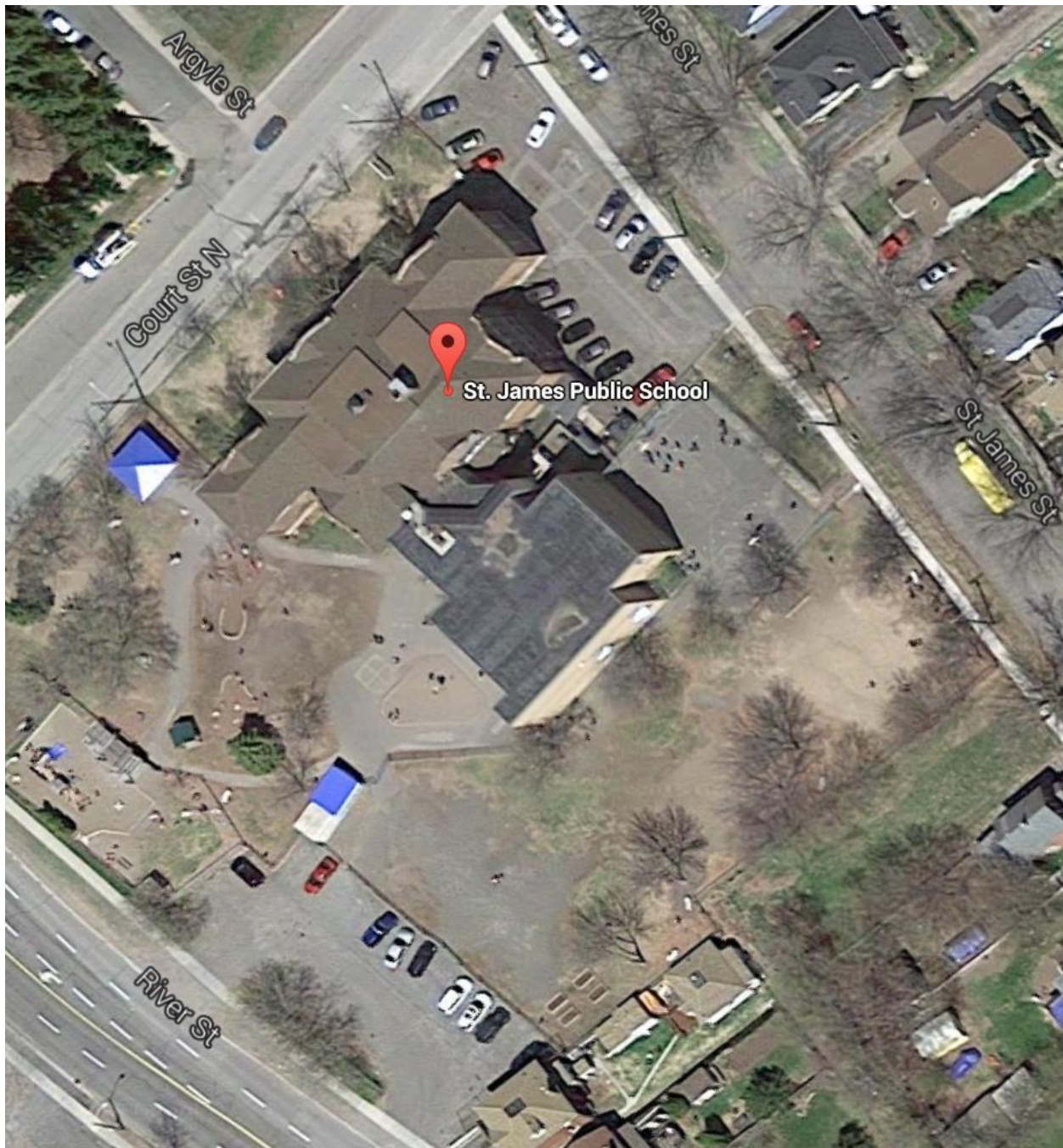
2015 FC (Functional) Capacity: 254.0



SCHOOL INFORMATION PROFILE

St. James Public School

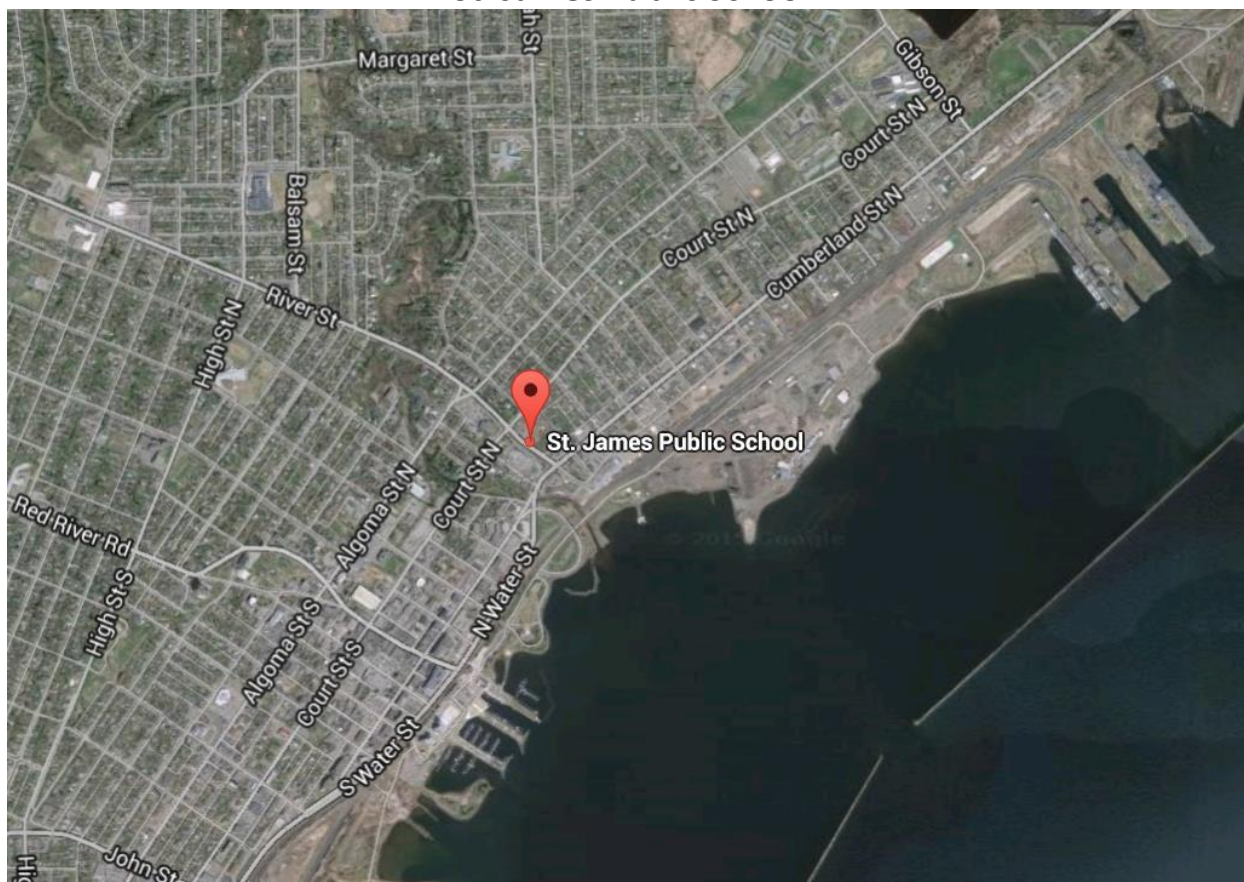
Aerial View – School Site



Aerial View – Neighbourhood

SCHOOL INFORMATION PROFILE

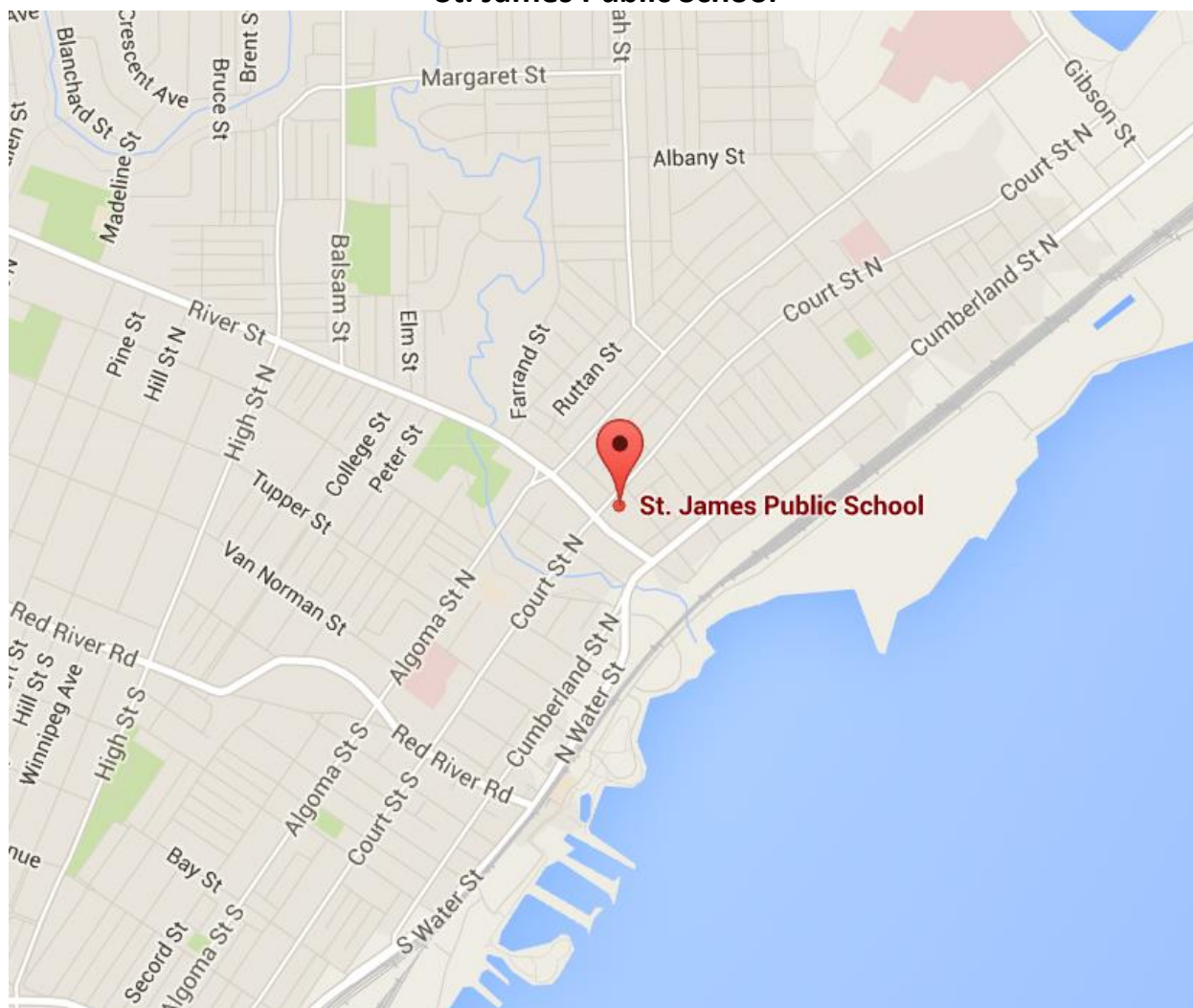
St. James Public School



Street Map

SCHOOL INFORMATION PROFILE

St. James Public School



SCHOOL INFORMATION PROFILE
St. James Public School

School Zone Boundary Map

