

North Side Renewal Plan

School Information Profile

Superior Collegiate and Vocational Institute

333 High Street North
Thunder Bay, ON
P7A 5S3

April 6, 2016



SCHOOL INFORMATION PROFILE

Superior Collegiate & Vocational Institute

Table of Contents

Purpose.....	3
Instructional Profile.....	4
Facility Profile.....	8
Other School Use Profile.....	12
Appendices:	
A Floor Plan.....	14
B Aerial View – School Site.....	16
C Aerial View – Neighbourhood.....	17
D Street Map.....	18

SCHOOL INFORMATION PROFILE

Superior Collegiate & Vocational Institute

Purpose

The School Information Profiles (SIP) is prepared by board staff as an orientation document to help the Accommodation Review Committee (ARC) and the greater community understand the context surrounding the decision to include a specific school or schools in a pupil accommodation review. The SIP provides an understanding of and familiarity with the facilities under review.

The School Information Profile includes data for each of the following two considerations about the school under review:

- value to the student; and
- value to the school board.

Information is prepared as at October 31, 2015 unless otherwise indicated.



SCHOOL INFORMATION PROFILE

Superior Collegiate & Vocational Institute

Instructional Profile

Grade Configuration	9-12
Specialized Programs	Pre-work Placement (PWP)

Current Grade Organization	Grade organization changes based on course offerings.
----------------------------	---

Enrolment (Number of Students) *October 31, 2015*

	Gr. 9	Gr. 10	Gr. 11	Gr. 12	Total Enrolment
Resident and Non-Resident	163	159	147	162	631
PWP	2	4	5	2	13
Total	165	163	152	164	644

Secondary Enrolment (FTE): 638.75

October 31, 2015

Lakehead District School Board Feeder Schools / Family of Schools	Armstrong Bernier-Stokes Claude E. Garton – English Five Mile Gorham and Ware McKenzie St. James Vance Chapman
Number of out-of-boundary students <i>*Students entering Grade 9 from a school other than a designated feeder school</i> <i>**Students entering Grade 9 from a coterminous school that would not be designated a feeder school, based on location of elementary school zones</i>	29
Percentage of students accessing special education services <i>Source: Ministry of Education Elementary School Profile, January 2016</i> <i>*The percentage of the student population who are in special education programs or receive special education services. This includes students with identified and non-identified exceptionalities, but excludes students identified as gifted (Provincial average is 14.9%)</i>	17.6%

SCHOOL INFORMATION PROFILE

Superior Collegiate & Vocational Institute

School capacity	957
Utilization (FTE)	66.8%
<p><i>*School capacity and utilization are both "on-the-ground" (OTG) values.</i></p> <p><i>**The Ministry of Education calculates on-the-ground school capacity by assigning a loading to each category of instructional space identified (e.g. classroom, science lab), based on the number of pupils that can reasonably be accommodated in each category of instructional space. The sum of all the loading in the instructional space within a facility is its capacity.</i></p> <p><i>***Utilization is calculated by dividing the enrolment of the school by its capacity.</i></p>	

Enrolment History

Year	Enrolment (FTE – Full-time Equivalent)
2010-2011	884.50
2011-2012	866.00
2012-2013	807.25
2013-2014	736.65
2014-2015	635.40
2015-2016	638.75

Enrolment Projections

Year	Enrolment (FTE – Full-time Equivalent)
2016-2017	603.50
2017-2018	574.00
2018-2019	545.00
2019-2020	484.50
2020-2021	488.00
2021-2022	455.50
2022-2023	458.50
2023-2024	464.00
2024-2025	463.00

SCHOOL INFORMATION PROFILE

Superior Collegiate & Vocational Institute

Staff

Teaching Staff	Classroom Teachers	31.501	Total: 42.167
	Facilitator	1.5	
	Guidance	2.333	
	Student Success	2.0	
	In-School Alternative Education	1.0	
	Co-operative Education	1.333	
	Pre Work Placement	0.667	
	Native Studies	0.833	
	Kickstart	0.333	
	Library	0.667	
Support Staff	Student Support Professional	4.0	Total: 11.25
	Library Technician	1.0	
	Custodial	6.25	
Administrative Staff	Principal	1.0	Total: 6.0
	Vice-Principal	1.0	
	Secretarial	4.0	

Extra-Curricular and Co-Curricular Opportunities for Students	
<ul style="list-style-type: none"> • SSSAA • Breakfast program • Lunch program • Before and After School Tutoring • Aboriginal Tutor in a cultural environment • Annual Gryphon Gala • High School Idol • Music concert twice a year • Drama productions • Student council • SCORE (athletic student council) • Aboriginal Student Council • GSA • Natural Helpers • Anime Club • Grad Committee • Outers Club • Drama Club 	<ul style="list-style-type: none"> • Envirothon • Science Fair Club • Aboriginal Mentorship in Science with LU • travel club, • Crimestoppers • Safe School Team • We Stand Up • Annual Awards Night • Annual Grade 8 Open House • Student Vs. Teacher sporting events, • Student vs. Police Sporting events for charity • Grades 4-8 Football and Basketball camps • Spring Football Camp • Bridge the Gap Intergenerational Music Concert and Tea

SCHOOL INFORMATION PROFILE

Superior Collegiate & Vocational Institute

<ul style="list-style-type: none"> • Yearbook Committee • •Natural Helpers Retreat, • Grade 8 Leadership Retreat • Grade 8 half day visits (8-9 transitions) , • Grade 9 fun day (grade 9 transition), • Aboriginal Feast (broadcast to home communities so that parents could "attend" from remote communities) • Rest And Restore Room • Counselor half day a week from CCTB • •In School Graduation 	<ul style="list-style-type: none"> • Annual Semi Formal • Dances • Grade 8 dances, • Kickstart for grade 8 students • Movie Nights for the community • Halloween for Hunger, • Roots to Harvest (greenhouse, gardens, and farm to caf), • Grade 9, 12 Kingfisher Leadership Retreat • Grad BBQ
---	---

SCHOOL INFORMATION PROFILE

Superior Collegiate & Vocational Institute

Facility Profile

Date of Construction

Original Building	2009
Additions	N/A

Size of school site	6.7 acres / 2.7 hectares
Building area	127,531 sq.ft. / 11,848 m ²
Number of Portable Classrooms	0
Number of Classrooms and Specialized Teaching Spaces	<ul style="list-style-type: none"> - 2 Art Rooms - 1 Music Room - 1 Theatre/Dramatic Arts Room - 3 Broad-based Technology Rooms - 23 Classrooms - Gymnasium - 1 Exercise Room - 2 Library/Resource Rooms - 1 Science Room - 7 Technical/Vocational Rooms - 5 Science Labs - 1 Special Education Room
Field Area	Approximately 3 acres
Outdoor Features	- field

History of Major Facility Improvements (10-Year)

Year	Item	Cost
2009-2010	Backflow prevention renovations	\$8,333
2008-2009	Construction of school completed	\$31,845,156

Total Cost: \$31,853,489

Projected Facility Renewal Needs (5 year)

Element	Brief Description	Priority	Cost
Air Handling Units - Central Station AHU - Original Building	Replacement	High	\$120,099
Motor Control Centers	Replacement	High	\$0
Sprinklers - Original Building	Replacement	Medium	\$411,604
Fire Protection Specialties - Original Building	Replacement	Medium	\$7,546
Fire Alarm Systems - Original Building	Replacement	Medium	\$277,839

SCHOOL INFORMATION PROFILE

Superior Collegiate & Vocational Institute

Hot Water Boilers - Original Building	Replacement	Medium	\$290,209
Main Switchboards - Main Disconnect - Original Building	Replacement	Medium	\$114,654
Main Switchboards - Main Distribution Panel - Original Building	Replacement	Medium	\$85,990
Other Special Systems and Devices - Compressed Air Systems	Replacement	Medium	\$0
Other Special Systems and Devices - Dust Collector	Replacement	Medium	\$0
Heating/Chilling water distribution systems - Original Building	Replacement	Medium	\$876,457
Energy Supply - Original Building	Replacement	Medium	\$98,232
Secondary - Original Building	Replacement	Medium	\$308,684
Elevators & Lifts - Original Building	Replacement	Medium	\$117,470
Auxiliary Equipment - Chemical Feed System - Original Building	Replacement	Low	\$17,376
Auxiliary Equipment - HVAC Pumps - Original Building	Replacement	Low	\$18,101
Terminal & Package Units - Perimeter Radiators & Fan Coil Units - Original Building	Replacement	Low	\$916,118
Auxiliary Equipment - Stacks & Breaching - Original Building	Replacement	Low	\$31,857
Auxiliary Equipment - Expansion Tanks - Original Building	Replacement	Low	\$112,946
Lighting Equipment - Original Building	Replacement	Low	\$1,248,374
Lighting Equipment - Original Building	Replacement	Low	\$46,610
Lighting Equipment - Original Building	Replacement	Low	\$38,645
Lighting Equipment - Original Building	Replacement	Low	\$175,663
Controls & Instrumentation - Original Building	Replacement	Low	\$7,603
Other Cooling Generating Systems - DX-Split Condensers - Original Building	Replacement	Low	\$217,706
Other Heat Generating Systems - Rooftop AHU - Original Building	Replacement	Low	\$7,603
Other Heat Generating Systems - Make-Up AHU - Original Building	Replacement	Low	\$0
Other Heat Generating Systems - Space Heaters	Replacement	Low	\$0
Other Communications & Alarm Systems - Original Building	Replacement	Low	\$83,732
Plumbing Fixtures - Original Building	Replacement	Low	\$862,468

SCHOOL INFORMATION PROFILE

Superior Collegiate & Vocational Institute

Domestic Water Distribution - Domestic Water Heaters - Original Building	Replacement	Low	\$53,493
Domestic Water Distribution - Original Building	Replacement	Low	\$1,006,212
Domestic Water Distribution - Plumbing pumps	Replacement	Low	\$0
Air Distribution, Heating & Cooling - Original Building	Replacement	Low	\$0
Branch Wiring - Original Building	Replacement	Low	\$2,465,614
Public Address Systems - Original Building	Replacement	Low	\$442,669
Security Systems - Original Building	Replacement	Low	\$167,465
Exhaust Systems - Original Building - 40 Exh fans	Replacement	Low	\$103,905
Intercommunications Systems - Clock Systems	Replacement	Low	\$0
Ceiling Finishes - Original Building	Replacement	Low	\$60,207

Projected Total Cost: \$10,793,156

Facility Condition Index (FCI): 0.42%

Facility Condition Index is calculated by dividing the estimated cost of repairs over 5 years required in a building by the benchmark cost of a replacement facility.

5yr cost of repairs/replacement facility x 100 = FCI %

Utility Costs 2014-2015			
Total Utility Cost	Utility Cost / Student	Utility Cost / Sq.Ft.	Utility Cost / m ²
\$180,368.16	\$280.07	\$1.41	\$15.22

Parking	175 parking spots Parking is adequate for the needs of the school.
Bus Loading Zone	Yes Loading zone is adequate for the needs of the school.
Student Drop-Off Area	Yes Drop-off area is adequate for the needs of the school.

SCHOOL INFORMATION PROFILE

Superior Collegiate & Vocational Institute

Student Transportation

Proximity of Students to School	Closest: 0.1 km Farthest: 58.9 km Average: 6.6 km		
Number of Students not Eligible for Transportation	191		
Number of Transported Students	493		
<u>Ride Times</u>	<u>Longest</u>	<u>Shortest</u>	<u>Average</u>
To	123 minutes	3 minutes	32 minutes
From	97 minutes	2 minutes	28 minutes

<u>Current Accessibility</u> - Accessible parking - Automatic door opener - Accessible Washroom - Elevator/Chair lift - Interior ramps - Accessible alternate entrance	<u>Improvements Required</u>
--	------------------------------

SCHOOL INFORMATION PROFILE

Superior Collegiate & Vocational Institute

Other School Use Profile

Child Care

Provider	Details	Revenue (2014-2015)	Full Cost Recovery? Y/N
N/A			

Program-Related Leases/Partnerships

Provider	Details	Revenue (2014-2015)	Full Cost Recovery? Y/N
N/A			

Commercial Leases

Provider	Details	Revenue (2014-2015)	Full Cost Recovery? Y/N
N/A			

Community Use (2014-15)

SCHOOL INFORMATION PROFILE

Superior Collegiate & Vocational Institute

Details	Permitted Hours (School)	Minimum Permitted Hours (Board - Secondary)	Maximum Permitted Hours (Board - Secondary)	Average Permitted Hours (Board - Secondary)
Educational, parenting support, sports and recreation, health and wellness, child care, arts and cultural, supports for recent immigrants, social, meetings, community services, leadership, aboriginal-focused programs, supports for low-income communities, other	37,816.0	23,661.0	37,816.0	29,470.13

**Revenue is generated through Ministry of Education Funding for community use that occurs outside of regular school hours (i.e.-when extra custodial staff is required). System-wide community use is full-cost recovery.*

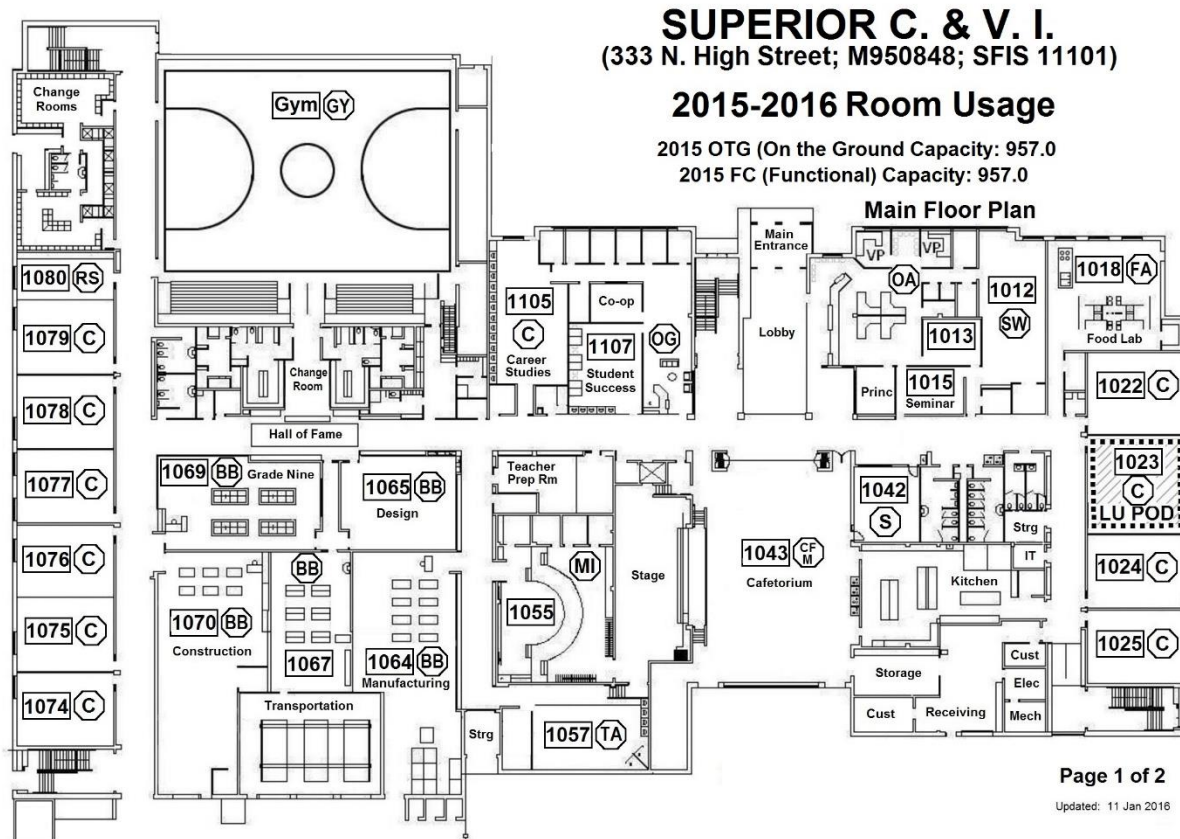
Suitability for Facility Partnerships:

Space is available for potential facility partnerships.

SCHOOL INFORMATION PROFILE

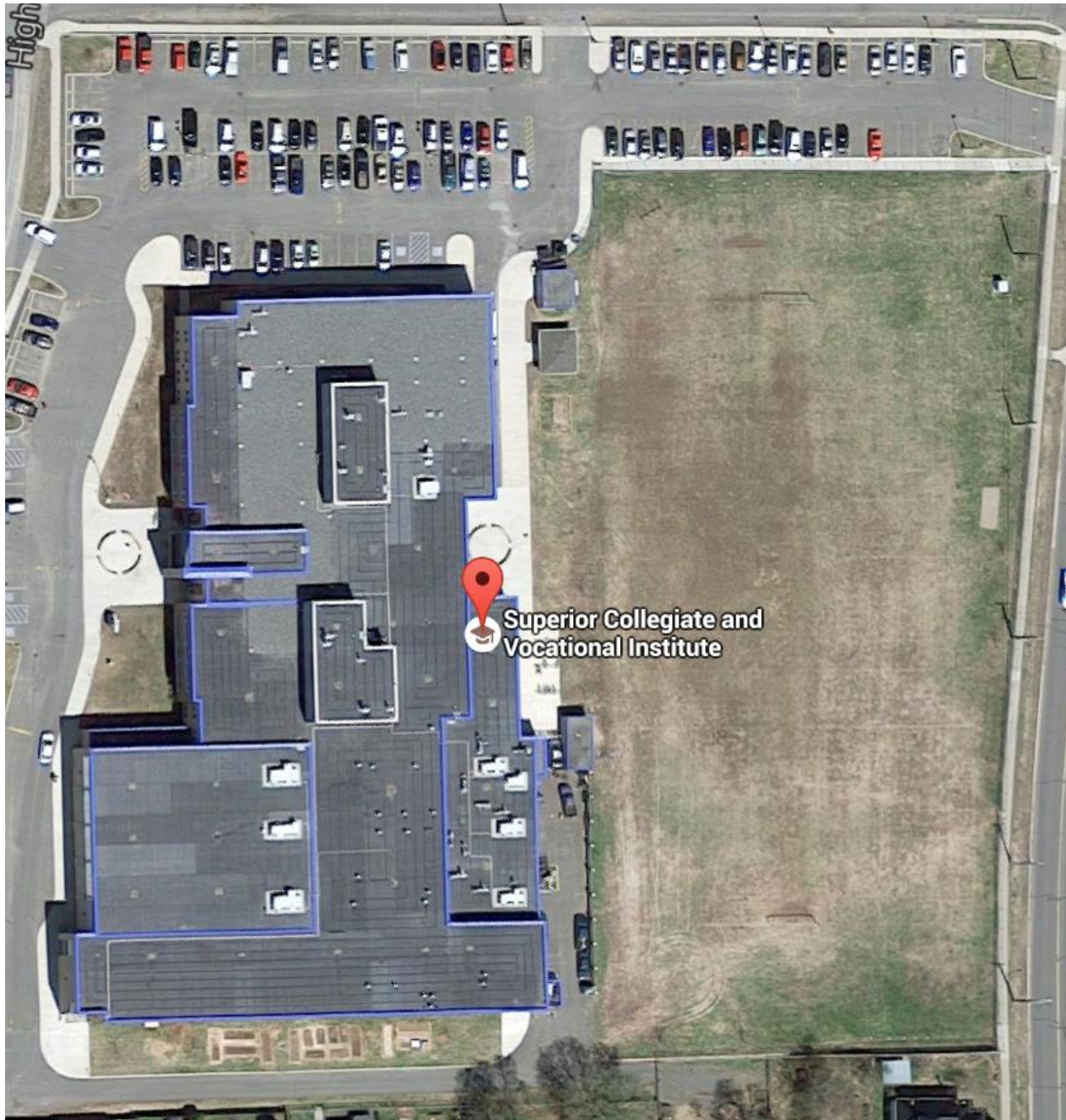
Superior Collegiate & Vocational Institute

Floor Plan 2015-2016



SCHOOL INFORMATION PROFILE
Superior Collegiate & Vocational Institute

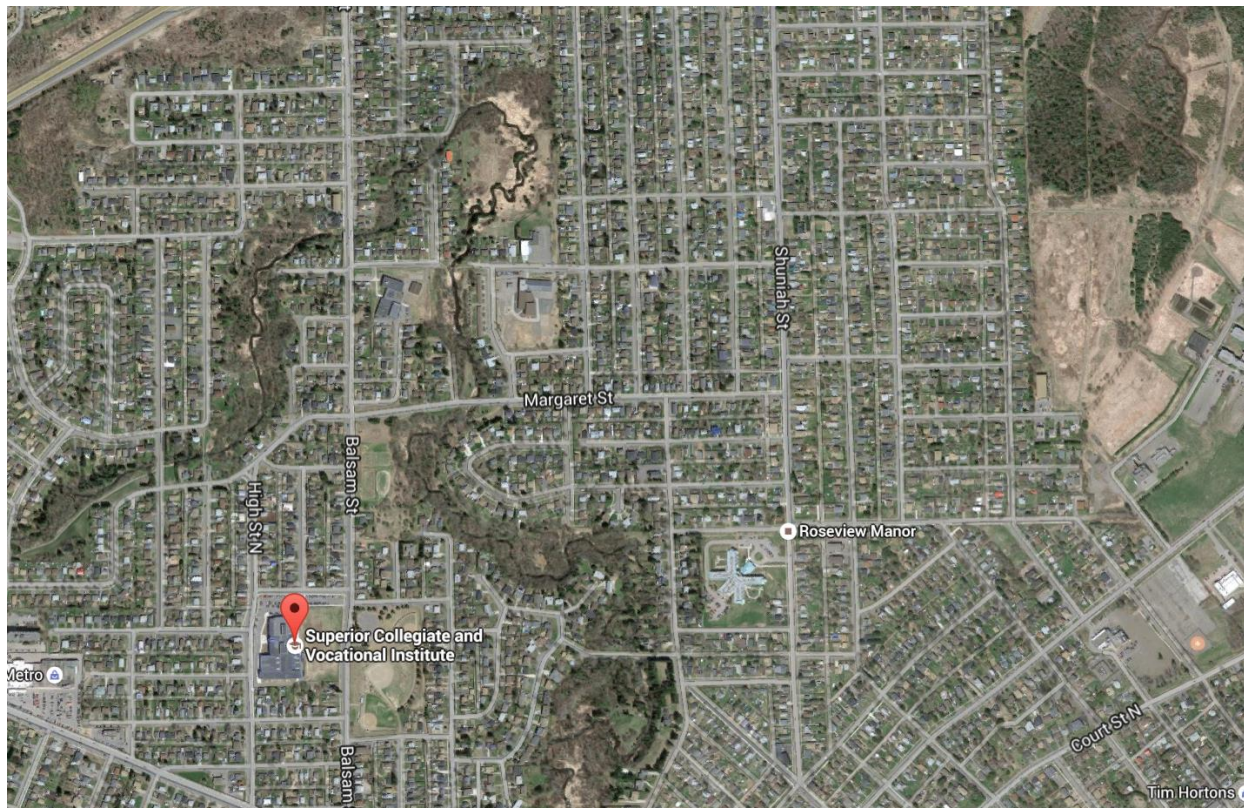
Aerial View – School Site



SCHOOL INFORMATION PROFILE

Superior Collegiate & Vocational Institute

Aerial View – Neighbourhood



SCHOOL INFORMATION PROFILE

Superior Collegiate & Vocational Institute

Street Map

