



## North Side Renewal Plan

# School Information Profile

**Vance Chapman**

1000 Huron Avenue  
Thunder Bay, ON  
P7A 6L4

April 6, 2016



## **SCHOOL INFORMATION PROFILE**

### **Vance Chapman Public School**

#### **Table of Contents**

Purpose.....	3
Instructional Profile.....	4
Facility Profile.....	7
Other School Use Profile.....	10
Appendices:	
A    Floor Plan.....	12
B    Aerial View – School Site.....	13
C    Aerial View – Neighbourhood.....	14
D    Street Map.....	15
E    School Zone Boundary Map.....	16

## **SCHOOL INFORMATION PROFILE**

### **Vance Chapman Public School**

#### **Purpose**

The School Information Profiles (SIP) is prepared by board staff as an orientation document to help the Accommodation Review Committee (ARC) and the greater community understand the context surrounding the decision to include a specific school or schools in a pupil accommodation review. The SIP provides an understanding of and familiarity with the facilities under review.

The School Information Profile includes data for each of the following two considerations about the school under review:

- value to the student; and
- value to the school board.

Information is prepared as at October 31, 2015 unless otherwise indicated.



## SCHOOL INFORMATION PROFILE

### Vance Chapman Public School

### Instructional Profile

Grade Configuration	FDK-8
Specialized Programs	Special Needs Program

Current Grade Organization	<u>Grade</u> JK/SK 1 1/2 2/3 3/4 4/5 5/6 7 8	<u>Number of Classes</u> 2 1 1 1 1 1 1 2 2
Number of single-grade classes	5	
Number of split-grade classes	7	

#### Enrolment *October 31, 2015*

	JK	SK	1	2	3	4	5	6	7	8	Total
	13	32	22	30	16	22	24	21	54	35	269
Special Needs	-	-	-	1	-	-	3	2	1	2	9
Total	13	32	22	31	16	22	27	23	55	37	278

<b>Number of out-of-boundary students</b> <i>*For schools with French Immersion, JK students are not included.</i> <i>**Students attending system programs are not considered out-of-zone (special needs, IB, etc.)</i> <i>***Intermediate students from an FDK-6 school moving to the FDK-8 school that they are zoned for are not included.</i> <i>****For the Churchill 7-8 program, students on the North side are considered out of zone.</i>	46
<b>Percentage of students accessing special education services</b> <i>Source: Ministry of Education Elementary School Profile, January 2016</i> <i>*The percentage of the student population who are in special education programs or receive special education services. This includes students with identified and non-identified exceptionalities, but excludes students identified as gifted (Provincial average is 14.9%)</i>	20.7%

## SCHOOL INFORMATION PROFILE

### Vance Chapman Public School

School capacity	381
Utilization	73%
<p><i>*School capacity and utilization are both “on-the-ground” (OTG) values.</i></p> <p><i>**The Ministry of Education calculates on-the-ground school capacity by assigning a loading to each category of instructional space identified (e.g. classroom, science lab), based on the number of pupils that can reasonably be accommodated in each category of instructional space. The sum of all the loading in the instructional space within a facility is its capacity.</i></p> <p><i>***Utilization is calculated by dividing the enrolment of the school by its capacity.</i></p>	

#### Enrolment History

Year	Enrolment
2010-2011	318
2011-2012	314
2012-2013	300
2013-2014	275
2014-2015	301
2015-2016	278

#### Enrolment Projections

Year	Enrolment
2016-2017	283
2017-2018	260
2018-2019	248
2019-2020	232
2020-2021	220
2021-2022	220
2022-2023	210
2023-2024	207
2024-2025	189
2025-2026	190

## SCHOOL INFORMATION PROFILE

### Vance Chapman Public School

#### Staff

Teaching Staff	Classroom Teacher	12.0	Total: 17.606
	Facilitator	1.0	
	Itinerant Teacher	2.606	
	Early Childhood Educator	2.0	
Support Staff	Student Support Professional	10.0	Total: 13.75
	Information Services Technician	0.75	
	Custodial	3.0	
Administrative Staff	Principal	1.0	Total: 2.25
	Vice-Principal	N/A	
	Secretarial	1.25	

#### Extra-Curricular and Co-Curricular Opportunities for Students

- Lakehead Elementary Athletics
- Christmas Cheer
- Play days
- Spring up to Clean up
- Chess club
- Social Justice club



## SCHOOL INFORMATION PROFILE

### Vance Chapman Public School

#### Facility Profile

##### Date of Construction

Original Building	1958
Additions	1961, 1964, 1974

Size of school site	9.3 acres / 3.8 hectares
Building area	50,235 sq.ft. / 4667 m <sup>2</sup>
Number of Portable Classrooms	0
Number of Classrooms and Specialized Teaching Spaces	<ul style="list-style-type: none"> <li>- 2 FDK Classrooms</li> <li>- 13 Classrooms</li> <li>- Gymnasium</li> <li>- Library</li> <li>- 2 Special Education Classrooms</li> </ul>
Playground Area	Approximately 8 acres
Outdoor Features	<ul style="list-style-type: none"> <li>- play structure</li> <li>- basketball court</li> <li>- gazebo</li> </ul>

##### History of Major Facility Improvements (10-Year)

Year	Item	Cost
2013-2014	New public address system	\$11,204
	FDK Classroom and Washrooms – Minor renovations	\$174,715
	Daycare construction (indoor and outdoor play area)	\$560,963
2012-2013	Exterior front entrance and façade improvements	\$561,000
	Backflow assessment and renovations	\$10,000
	Partial suspended ceiling upgrades	\$70,000
2011-2012	Heating and ventilation upgrades	\$300,000
2009-2010	Site paving and bus loading improvements	\$175,000
	Partial roof replacement	\$67,475
2008-2009	New sports field	\$36,818
2006-2007	Life safety renovations	\$61,000
2004-2005	Roofing	\$202,000
	Accessible washroom	\$10,500

Total Cost: \$2,240,675

## SCHOOL INFORMATION PROFILE

### Vance Chapman Public School

#### Projected Facility Renewal Needs (5 year)

Element	Brief Description	Priority	Cost
Underground Utilities - Site	Study	High	\$13,520
Underground Utilities - Site	Replacement	High	\$313,456
Heating water distribution systems - Heating Piping System	Replacement	High	\$1,085,656
Roof Coverings - Built-Up Roof - Original Building and Additions 1, 2 & 3	Replacement	High	\$256,880
Elevators & Lifts	Replacement	High	\$40,560
Terminal & Package Units - Unit Ventilators	Replacement	High	\$202,800
Lighting Equipment - Exit Lighting	Replacement	High	\$13,520
Lighting Equipment - Exit Lighting	Replacement - Asset Reconstruction	High	\$1
Lighting Equipment - Emergency Lighting	Replacement	High	\$33,800
Lighting Equipment - Emergency Lighting	Replacement - Asset Reconstruction	High	\$1
Domestic Water Distribution - Plumbing Pumps	Replacement	Medium	\$13,520
Other Communications & Alarm Systems - I.T.Systems	Replacement	Medium	\$67,600
Domestic Water Distribution - Plumbing Piping Systems	Replacement	Medium	\$373,152
Branch Wiring	Replacement	Medium	\$984,256
Storm Water Management - Site	Study	Medium	\$13,520
Storm Water Management - Site	Major Repair	Medium	\$155,480
Standpipe Systems	Study	Medium	\$1
Standpipe Systems	Upgrade	Medium	\$6,699
Wall Finishes - Acoustic Paneled Wall - Addition 3	Replacement	Medium	\$48,672
Energy Supply - Gas Supply System	Replacement	Medium	\$0
Auxiliary Equipment - Expansion Tanks	Replacement	Low	\$0
Auxiliary Equipment - HVAC Pumps	Replacement	Low	\$0
Auxiliary Equipment - Chemical Feed System	Replacement	Low	\$0
Lighting Equipment - Interior Lighting	Replacement	Low	\$0
Lighting Equipment - Interior Lighting	Replacement	Low	\$1
Lighting Equipment - Interior Lighting	Replacement	Low	\$260,488
Controls & Instrumentation	Replacement	Low	\$61,989



## SCHOOL INFORMATION PROFILE

### Vance Chapman Public School

Lighting Equipment - Interior Lighting	Replacement	Low	\$260,488
Plumbing Fixtures	Replacement - Low water Consumption	Low	\$78,869
Security Systems	Replacement	Low	\$7,443

Projected Total Cost: \$4,292,372

**Facility Condition Index (FCI): 38.13%**

*Facility Condition Index is calculated by dividing the estimated cost of repairs over 5 years required in a building by the benchmark cost of a replacement facility.*

*5yr cost of repairs/replacement facility x 100 = FCI %*

Utility Costs 2014-2015			
Total Utility Cost	Utility Cost / Student	Utility Cost / Sq.Ft.	Utility Cost / m <sup>2</sup>
\$53,782.48	\$193.46	\$1.07	\$11.52

Parking	32 parking spots + 40 in the field Parking is adequate for the needs of the school.
Bus Loading Zone	No
Student Drop-Off Area	Yes Drop-off area is adequate for the needs of the school.

#### Student Transportation

Proximity of Students to School	Closest: 0.04 km Farthest: 15.2 km Average: 2.2 km		
Number of Students not Eligible for Transportation	136		
Number of Transported Students	199		
Ride Times  To  From	<u>Longest</u>	<u>Shortest</u>	<u>Average</u>
	33 minutes	3 minutes	15 minutes
	40 minutes	1 minute	13 minutes

<u>Current Accessibility</u> - Accessible parking - Automatic door opener - Accessible entrance - Accessible Washroom	<u>Improvements Required</u> - Elevator/Chair lift
---	---

## SCHOOL INFORMATION PROFILE

### Vance Chapman Public School

#### Other School Use Profile

##### Child Care

Provider	Details	Revenue (2014-2015)	Full Cost Recovery? Y/N
Kinderplace Child Care Centre	Full Day - Infant - Toddler - Pre-school Before and After School - JK/SK - School Age	\$25,536.24	Y

##### Program-Related Leases/Partnerships

Provider	Details	Revenue (2014-2015)	Full Cost Recovery? Y/N
N/A			

##### Commercial Leases

Provider	Details	Revenue (2014-2015)	Full Cost Recovery? Y/N
Union Gas Lands Department	Land to maintain pumping station	\$375.00	Y

## SCHOOL INFORMATION PROFILE

### Vance Chapman Public School

#### Community Use (2014-15)

Details	Permitted Hours (School)	Minimum Permitted Hours (Board - Elementary)	Maximum Permitted Hours (Board - Elementary)	Average Permitted Hours (Board - Elementary)
Sports and recreation, child care programs, social	28,619.50	10,386.50	36,306.00	20,003.57

*\*Revenue is generated through Ministry of Education Funding for community use that occurs outside of regular school hours (i.e.-when extra custodial staff is required). System-wide community use is full-cost recovery.*

#### Suitability for Facility Partnerships:

Space is available for suitable facility partnerships.

## SCHOOL INFORMATION PROFILE

### Vance Chapman Public School

#### Floor Plan 2015-2016

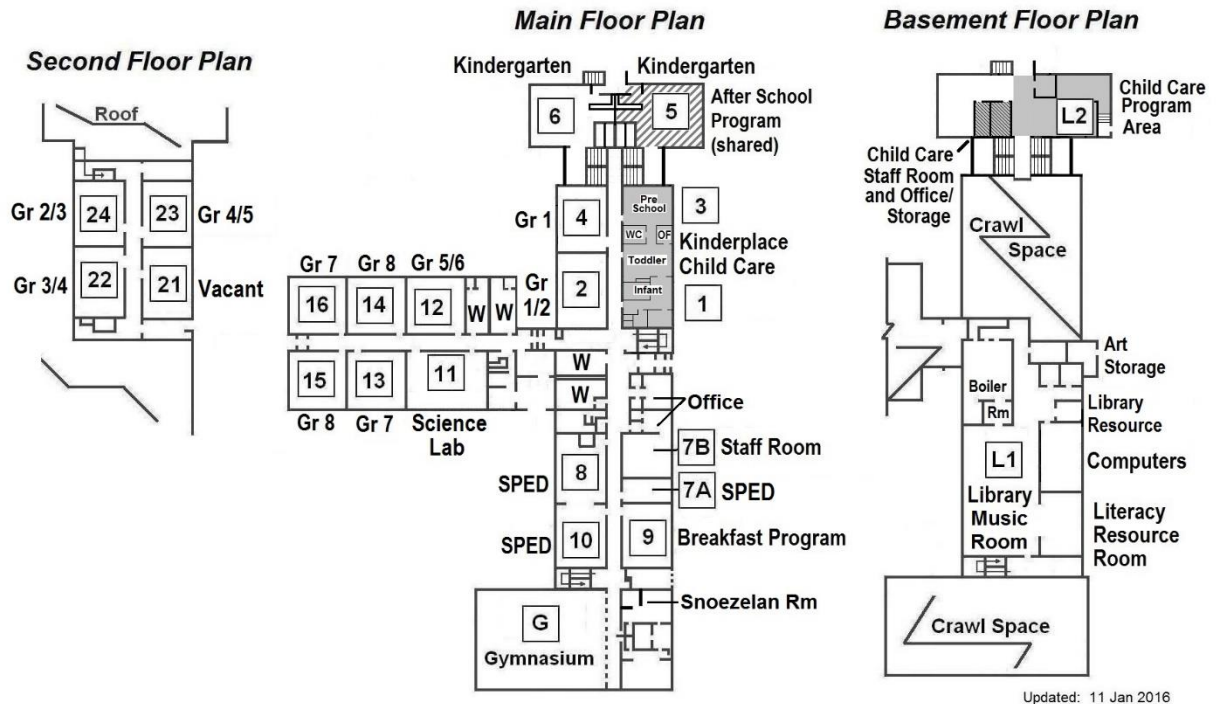
## VANCE CHAPMAN PUBLIC SCHOOL

(1000 Huron Avenue; M570125; SFIS 7571)

### 2015-2016 Room Usage

2015 OTG (On the Ground) Capacity: 381.0

2015 FC (Functional) Capacity: 367.0



**SCHOOL INFORMATION PROFILE**  
**Vance Chapman Public School**

**Aerial View – School Site**

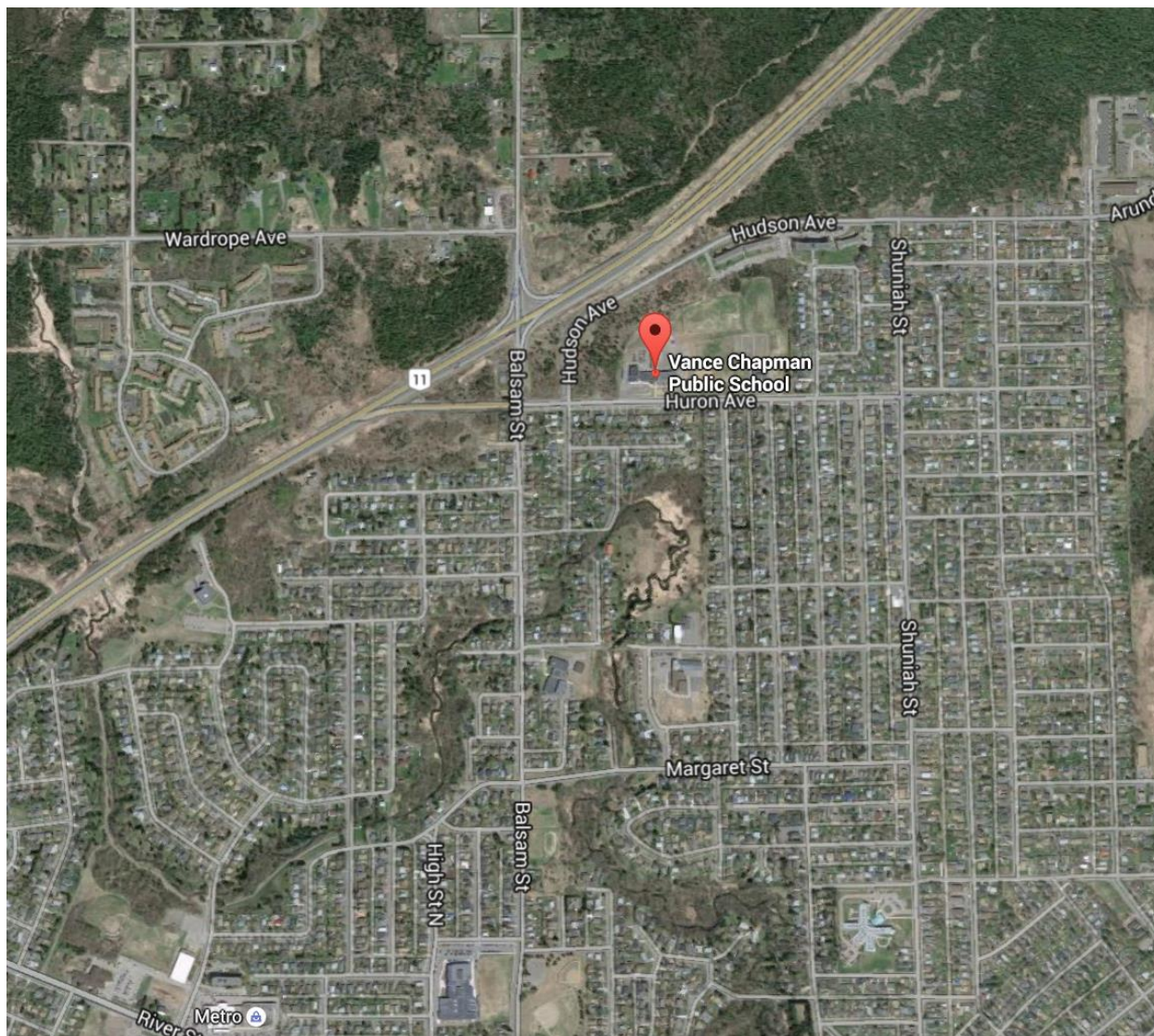




## SCHOOL INFORMATION PROFILE

### Vance Chapman Public School

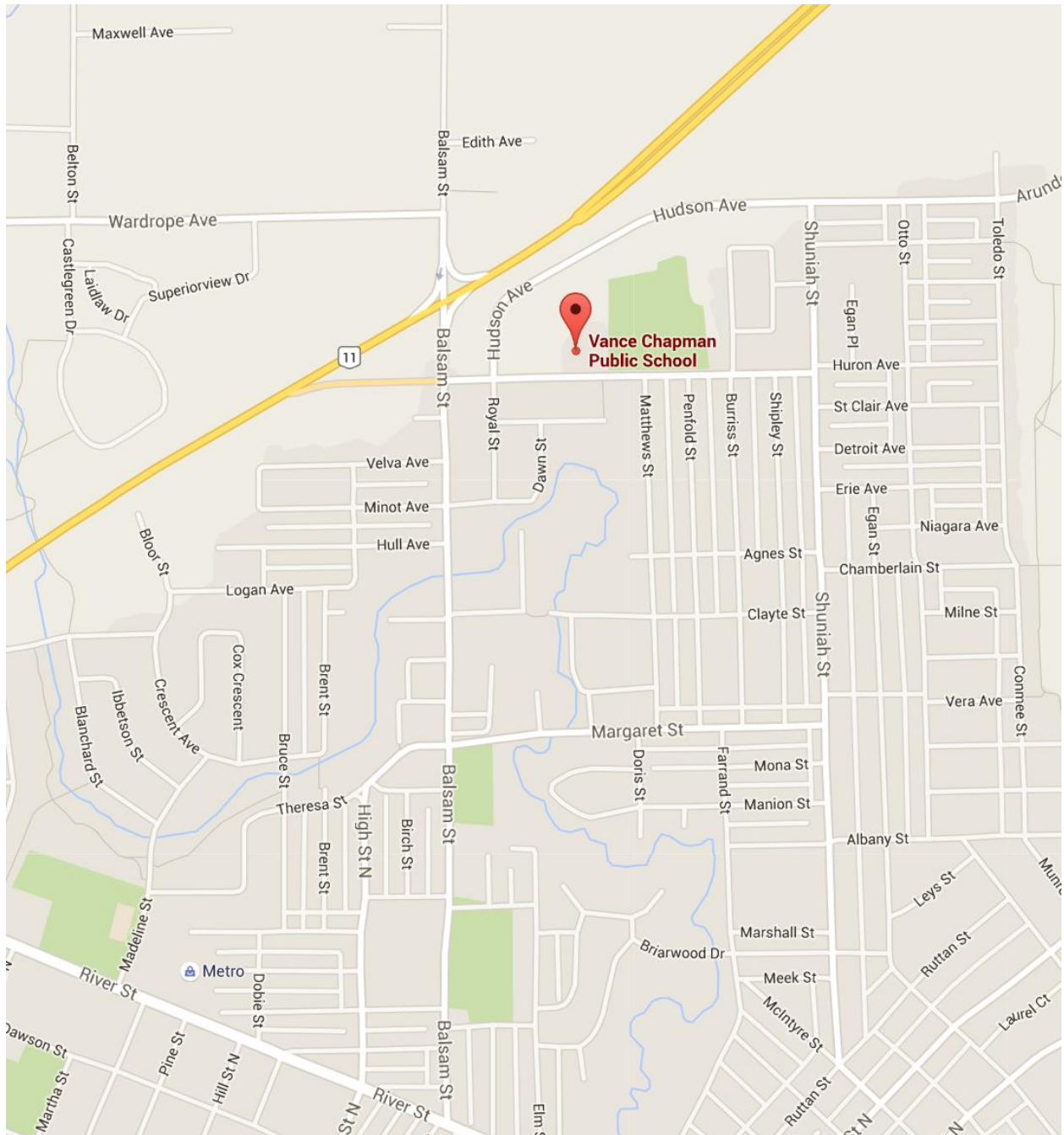
#### Aerial View – Neighbourhood



## SCHOOL INFORMATION PROFILE

### Vance Chapman Public School

#### Street Map





**SCHOOL INFORMATION PROFILE**  
**Vance Chapman Public School**  
**School Zone Boundary Map**

